

1. Site and Organization





KEK consists of four research institutions, i.e., the Institute of Materials Structure Science (IMSS), the Institute of Particle and Nuclear Studies (IPNS), the Accelerator Laboratory (AL), and the Applied Research Laboratory. As shown in Fig. 1, the IMSS constitutes the Synchrotron Radiation Science Divisions I and II, the Neutron Science Division, the Muon Science Division, the Structural Biology Research Center, and the Condensed Matter Research Center. Table I shows a list of the members of the Advisory Committee of the IMSS.

Photon Factory (PF) consists of two divisions of the IMSS (the Synchrotron Radiation Science Divisions I and II) and the Accelerator Division VII of the AL as shown in the organization chart of Fig. 2. The staff members of the PF are listed in Table 2. Synchrotron Radiation Science Divisions I and II consist of five

beamline groups (electronic structure group, condensed matter group, materials chemistry group, life sciences group and slow positron group), two engineering and administration groups (beamline engineering, technical services & safety group and user support & dissemination group) and two working groups (ultrafast dynamics group and advanced detector R&D group). The Accelerator Division VII has six groups, which are named Light Source Group I to VI. The missions of each group are as follows: Group I is in charge of orbits, magnets, and insertion devices, Group II of RF, SC cavities and so on, Group III mainly of vacuum, Group IV mainly of beam diagnostics and accelerator control, Group V of front-end, safety and so on, and Group VI mainly of electron guns.

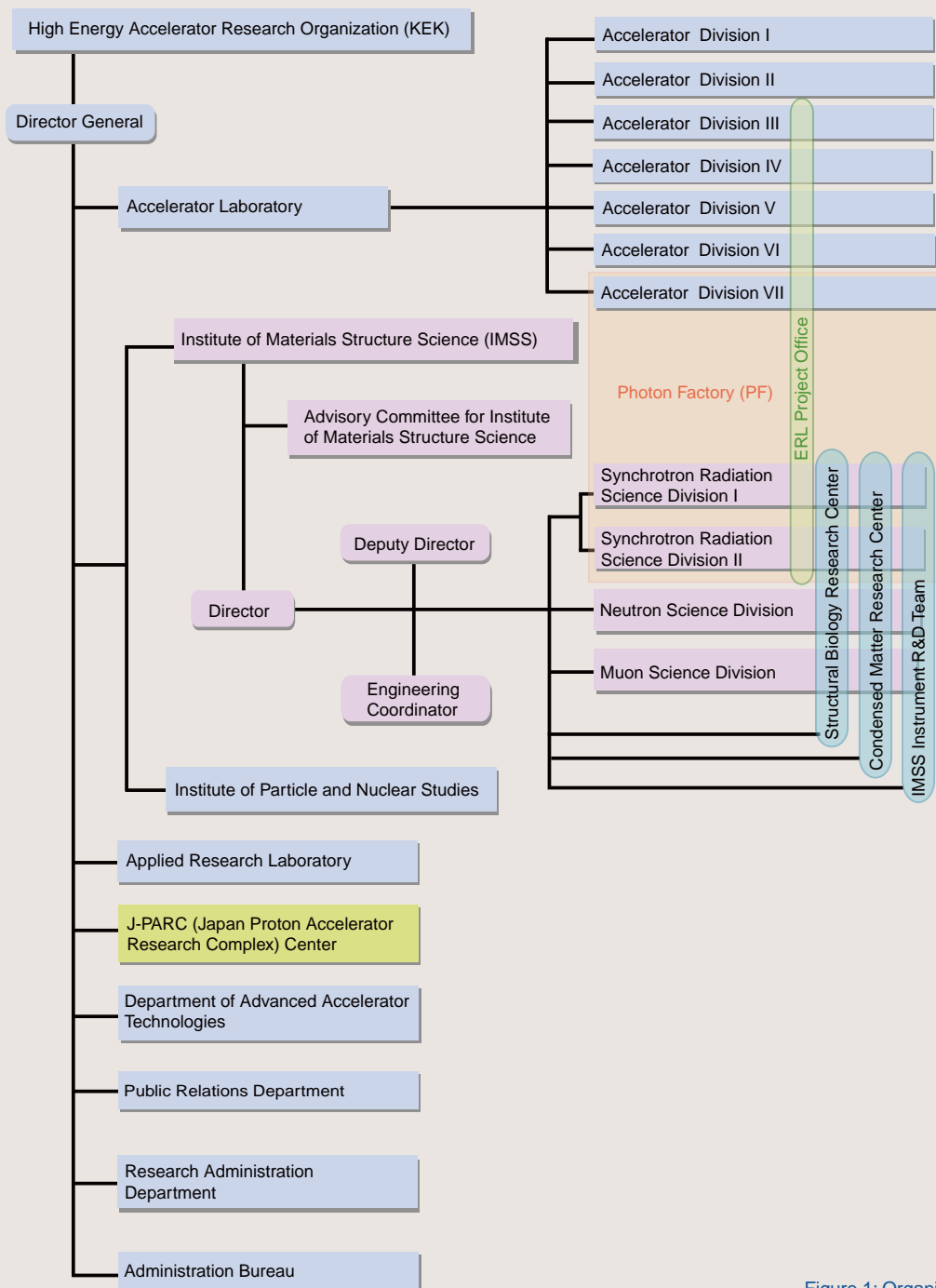
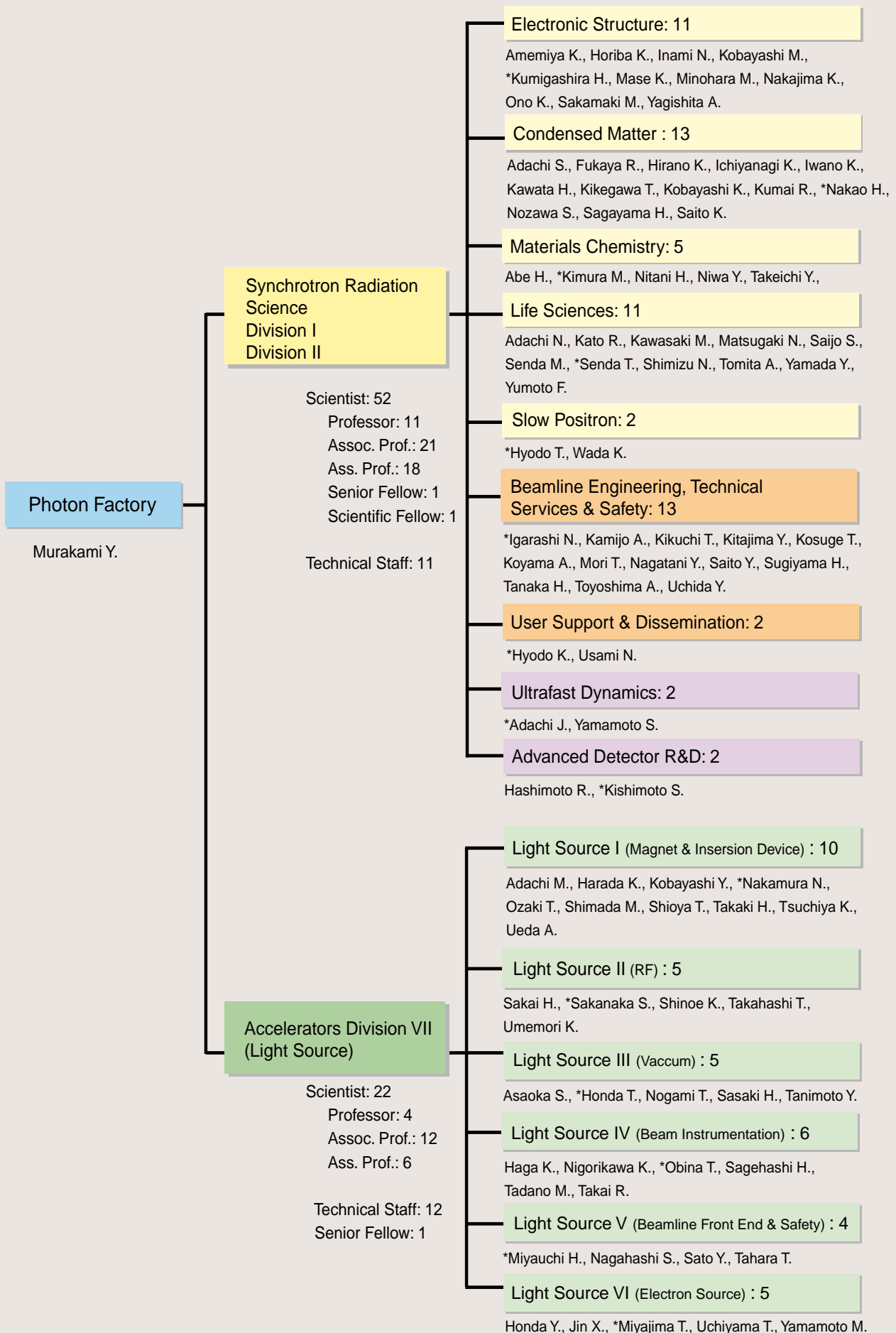


Figure 1: Organization chart of KEK.

Table 1: The members of the Advisory Committee for Institute of Materials Structure Science.

| | |
|----------------------|---|
| ADACHI, Shin-ichi | Photon Factory, IMSS, KEK |
| AKIMITSU, Jun | Aoyama Gakuin University |
| AMEMIYA, Yoshiyuki** | The University of Tokyo |
| FUJII, Yasuhiko | Comprehensive Research Organization for Science and Society |
| KADONO, Ryosuke | Muon Science Division, IMSS, KEK |
| KANAYA, Toshiji | Kyoto University |
| KATAOKA, Mikio | Nara Institute of Science and Technology |
| KAWATA, Hiroshi | Photon Factory, IMSS, KEK |
| KOBAYASHI, Yukinori | Photon Factory, Accelerator Laboratory, KEK |
| KUMAI, Reiji | Photon Factory, IMSS, KEK |
| KUMIGASHIRA, Hiroshi | Photon Factory, IMSS, KEK |
| MIYAKE, Yasuhiro | Muon Science Division, IMSS, KEK |
| MIZUKI, Jun'ichiro | Kwansei Gakuin University |
| MURAKAMI, Youichi | Photon Factory, IMSS, KEK |
| OSHIMA, Masaharu | The University of Tokyo |
| OTOMO, Toshiya | Neutron Science Division, IMSS, KEK |
| SAITO, Naohito | Institute of Particle and Nuclear Studies, KEK |
| SASAKI, Shinichi | Applied Research Laboratory, KEK |
| SATO, Mamoru | Yokohama City University |
| SENDA, Toshiya | Photon Factory, IMSS, KEK |
| SETO, Hideki* | Neutron Science Division, IMSS, KEK |
| TAKATA, Masaki | RIKEN/SPring-8 |
| TORIKAI, Eiko | University of Yamanashi |
| YAMAGUCHI, Seiya | Accelerator Laboratory, KEK |

* Chairperson ** Vice-Chairperson



* Group Leader

Figure 2: Organization chart of PF (as of March 31, 2015) .

Table 2: Staff members of the Photon Factory.

| Name | Group* |
|---|--------------------|
| Research Staff | |
| Director MURAKAMI, Youichi | CM |
| Synchrotron Radiation Science Division I & II | |
| ABE, Hitoshi | MC |
| ADACHI, Jun-ichi | UD (ES) |
| ADACHI, Naruhiko | LS |
| ADACHI, Shinichi | CM (UD, AD) |
| AMEMIYA, Kenta | ES (BETSS, AD, UD) |
| BAN, Hiroshi | |
| FUKAYA, Ryo | CM |
| HASHIMOTO, Ryo | AD |
| HIRANO, Keiichi | CM |
| HORIBA, Koji | ES |
| HYODO, Kazuyuki | USD (LS) |
| HYODO, Toshio | SP |
| ICHIYANAGI, Kouhei | CM |
| IGARASHI, Noriyuki | BETSS (LS, AD) |
| INAMI, Nobuhito | ES (AD) |
| IWANO, Kaoru | CM |
| KAMIJO, Ai | BETSS |
| KATO, Ryuichi | LS |
| KAWASAKI, Masato | LS |
| KAWATA, Hiroshi | CM |
| KIKEGAWA, Takumi | CM |
| KIKUCHI, Takashi | BETSS (UD) |
| KIMURA, Masao | MC |
| KISHIMOTO, Shunji | AD, CM (UD) |
| KITAJIMA, Yoshinori | BETSS (ES) |
| KOBAYASHI, Kensuke | CM |
| KOBAYASHI, Masaki | ES |
| KOSUGE, Takashi | BETSS (AD, UD) |
| KOYAMA, Atsushi | BETSS |
| KUMAI, Reiji | CM (AD) |
| KUMIGASHIRA, Hiroshi | ES |
| MASE, Kazuhiko | ES |
| MATSUGAKI, Naohiro | LS |
| MINOHARA, Makoto | ES |
| MORI, Takeharu | BETSS |
| NAGATANI, Yasuko | BETSS |
| NAKAJIMA, Kyo | ES |
| NAKAO, Hironori | CM (UD) |
| NITANI, Hiroaki | MC |
| NIWA, Yasuhiro | MC (BETSS, UD) |
| NOZAWA, Shunsuke | CM (UD) |
| ONO, Kanta | ES (AD) |
| SAGAYAMA, Hajime | CM |
| SAIJO, Shinya | LS |
| SAITO, Kotaro | CM |
| SAITO, Yuuki | BETSS |
| SAKAMAKI, Masako | ES (AD) |
| SENDA, Miki | LS |
| SENDA, Toshiya | LS |
| SHIMIZU, Nobutaka | LS (BETSS) |
| SUGIYAMA, Hiroshi | BETSS (CM) |
| TAKEICHI, Yasuo | MC (AD) |
| TANAKA, Hirokazu | BETSS (UD) |

Sep. 1, 2014~

| Name | Group* |
|-------------------|---------------------|
| TOMITA, Ayana | LS |
| TOYOSHIMA, Akio | BETSS (<i>UD</i>) |
| UCHIDA, Yoshinori | BETSS |
| USAMI, Noriko | USD (<i>LS</i>) |
| WADA, Ken | SP |
| YAGISHITA, Akira | ES |
| YAMADA, Yusuke | LS |
| YAMAMOTO, Shigeru | UD |
| YUMOTO, Fumiaki | LS |

Accelerator Division VII

| | |
|----------------------|------------------|
| ADACHI, Masahiro | Light Source I |
| ASAOKA, Seiji | Light Source III |
| HAGA, Kaiichi | Light Source IV |
| HARADA, Kentaro | Light Source I |
| HONDA, Tohru | Light Source III |
| HONDA, Yosuke | Light Source VI |
| JIN, Xiuguang | Light Source VI |
| KOBAYASHI, Yukinori | Light Source I |
| MIYAJIMA, Tsukasa | Light Source VI |
| MIYAUCHI, Hiroshi | Light Source V |
| NAGAHASHI, Shinya | Light Source V |
| NAKAMURA, Norio | Light Source I |
| NIGORIKAWA, Kazuyuki | Light Source IV |
| NOGAMI, Takashi | Light Source III |
| OBINA, Takashi | Light Source IV |
| OZAKI, Toshiyuki | Light Source I |
| SAGEHASHI, Hidenori | Light Source IV |
| SAKAI, Hiroshi | Light Source II |
| SAKANAKA, Shogo | Light Source II |
| SASAKI, Hiroyuki | Light Source III |
| SATO, Yoshihiro | Light Source V |
| SHIMADA, Miho | Light Source I |
| SHINOE, Kenji | Light Source II |
| SHIOYA, Tatsuro | Light Source I |
| TADANO, Mikito | Light Source IV |
| TAHARA, Toshihiro | Light Source V |
| TAKAHASHI, Takeshi | Light Source II |
| TAKAI, Ryota | Light Source IV |
| TAKAKI, Hiroyuki | Light Source I |
| TANIMOTO, Yasunori | Light Source III |
| TSUCHIYA, Kimichika | Light Source I |
| UCHIYAMA, Takashi | Light Source VI |
| UEDA, Akira | Light Source I |
| UMEMORI, Kensei | Light Source II |
| YAMAMOTO, Masahiro | Light Source VI |

May. 1, 2014~

* Synchrotron Radiation Science Division (*Italic: additional posts*)

| | |
|-------|---|
| ES | Electronic Structure |
| CM | Condensed Matter |
| MC | Materials Chemistry |
| LS | Life Sciences |
| SP | Slow Positron |
| BETSS | Beamline Engineering, Technical Services and Safety |
| USD | User Support and Dissemination |
| UD | Ultrafast Dynamics |
| AD | Advanced Detector R&D |

 Name

Guest Professor

| | |
|---------------------|-----------------------------------|
| ASAKURA, Kiyotaka | (Hokkaido Univ.) |
| HAJIMA, Ryoichi | (JAEA) |
| ISHIHARA, Sumio | (Tohoku Univ.) |
| KAMIKUBO, Hironari | (Nara Inst. of Science and Tech.) |
| KATOH, Masahiro | (UVSOR) |
| KONDO, Tadashi | (Osaka Univ.) |
| KOSHIHARA, Shinya | (Tokyo Inst. Tech.) |
| KURAMOTO, Yoshio | (Tohoku Univ.) |
| MORITOMO, Yutaka | (Univ. of Tsukuba) |
| NAGASHIMA, Yasuyuki | (Tokyo Univ. of Science) |
| OHKUMA, Haruo | (SPring-8) |
| TAKAHASHI, Yoshio | (The Univ. of Tokyo) |
| YAO, Min | (Hokkaido Univ.) |

Postdoctoral Fellow

| | |
|----------------------|----------------|
| HONDA, Takashi | |
| KIMIJIMA, Kenichi | |
| KOMURO, Masanori | |
| KUWABARA, Naoyuki | |
| LIEBSCHNER, Dorothee | |
| LO, Yu-Hua | ~Sep. 30, 2014 |
| MAKIO, Hisayoshi | |
| MATSUSHITA, Tadashi | |
| MILLER, Simon | |
| MOCHIZUKI, Izumi | |
| NAGAE, Takayuki | ~May. 31, 2014 |
| SAKAI, Enjyu | |
| SATO, Hikaru | Oct. 1, 2014~ |
| SATO, Nozomi | |
| SATO, Yukari | |
| SUDAYAMA, Takaaki | |
| SUZUKI, Nobuhiro | |
| TAKAGI, Hideaki | |
| TAKAHASHI, Kei | |
| TAKAHASHI, Yumiko | |
| TANAKA, Olga | |
| TSUKAHARA, Hiroshi | May. 16, 2014~ |
| WAKATSUKI, Soichi | |
| WATANABE, Shuji | |
| YAMASHITA, Yoshiki | |

The Graduate University for Advanced Studies

| | |
|-------------------|----------------|
| HARADA, Ayaka | |
| INOUE, Keisuke | |
| MATSUBARA, Haruki | |
| WU, Yanlin | ~Sep. 30, 2014 |