

## 6

## Graduate School Education

KEK is one of the basic organizations of the Graduate University for Advanced Studies (SOKENDAI), and has the School of High Energy Accelerator Science, which consists of three departments: Accelerator Science, Materials Structure Science, and Particle and Nuclear Physics. The majority of the PF staff members are in charge of giving lectures and supervising graduate students of the Department of Materials Structure Science. SOKENDAI offers a five-year PhD course for undergraduate students and a three-year PhD course for master's degree holders. The School of High Energy Accelerator Science held its "open campus day" for young researchers and undergraduate students at the Tsukuba campus on July 8, 2014 and half-day guidance meetings for potential young candidates in June 21, 2014 and March 7, 2015 at Tokyo. Figure 1 is a photo of Prof. Toshiya Senda of the PF, who explains what is "Structural Biology" by using synchrotron radiation at the guidance meeting in March 7, 2015. Another topic of FY2014 for SOKENDAI was that Dr. Renzhong Tai, who was graduated SOKENDAI at 1999 and now is a deputy director of Shanghai Synchrotron Radiation Facility (SSRF), visited at the Academic Exchange Sessions of SOKENDAI during the period of the graduation ceremony at March 24, 2015. After the session, Dr. R. Tai visited to the photon Factory and gave us the seminar talk about the "present status of SSRF". Figure 2 is a photo of Dr. R. Tai at the seminar.



Figure 1: A snapshot of a guidance.



Figure 2: A snapshot of a seminar.

The PF has also a system for Joint PhD (JPHD) students, who are accepted by the PF to pursue advanced studies under the supervision of PF staff members towards their PhD degrees in collaboration with their home universities. The numbers of graduate students of SOKENDAI and JPHD during the past fifteen years are listed in Table 1.

In addition to the SOKENDAI and JPHD graduate students, a number of doctoral theses were written based on research carried out at the PF. Figure 3 shows the statistics of such graduate students. We are afraid that the decrease of operation time may have some influence on the decline since 2011 (ref. p.79) of the number of students who obtain doctoral degrees based on scientific activities at the PF.

Table 1: Number of SOKENDAI and JPHD students at the PF over the period 2000-2014. Number of October 1 at each year.

FY	SOKENDAI	JPHD
2000	8	12
2001	10	8
2002	13	13
2003	15	7
2004	14	5
2005	13	6
2006	9	10
2007	6	13
2008	6	10
2009	6	9
2010	5	10
2011	4	5
2012	3	6
2013	4	7
2014	3	7

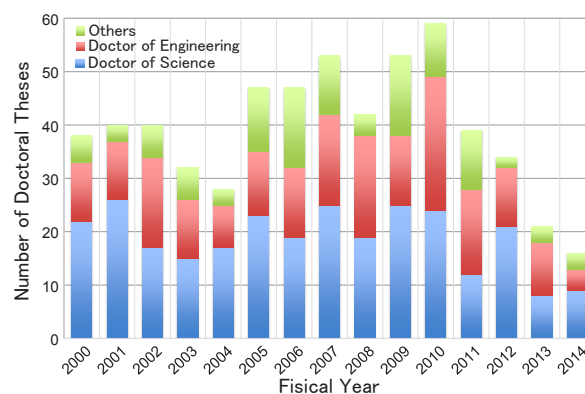


Figure 3: Number of students who obtained doctoral degrees based on scientific activities at the PF.