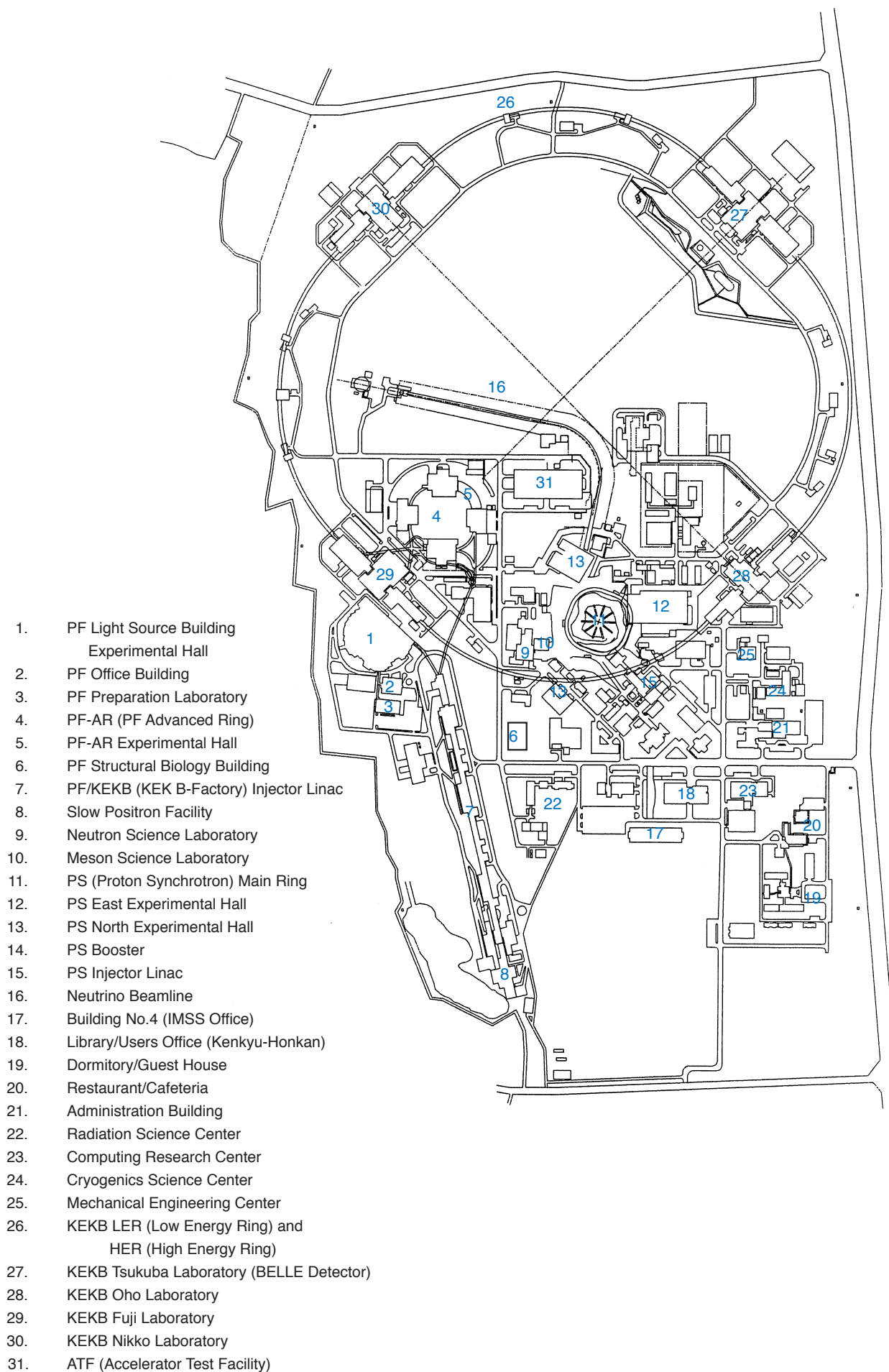


1. Site and Organization

Figure 1 shows the aerial view and corresponding site map of KEK.



Figure 1.
Aerial view of the KEK campus.



KEK consists of four research institutions, i.e., the Institute of Materials Structure Science (IMSS), the Institute of Particle and Nuclear Studies, the Accelerator Laboratory and the Applied Research Laboratory. The PF is a part of the IMSS together with the Neutron Science Laboratory and the Meson Science Laboratory, as shown in Fig. 2. The mem-

bers of the Board of Councilors and the Advisory Council for Scientific Policy and Management of the IMSS are listed in Tables 1 and 2. The organization chart of the PF is shown in Fig. 3. The PF consists of three divisions, i.e. the Experimental Facility Divisions I and II, and the Light Source Division. The PF staff members are listed in Table 3.

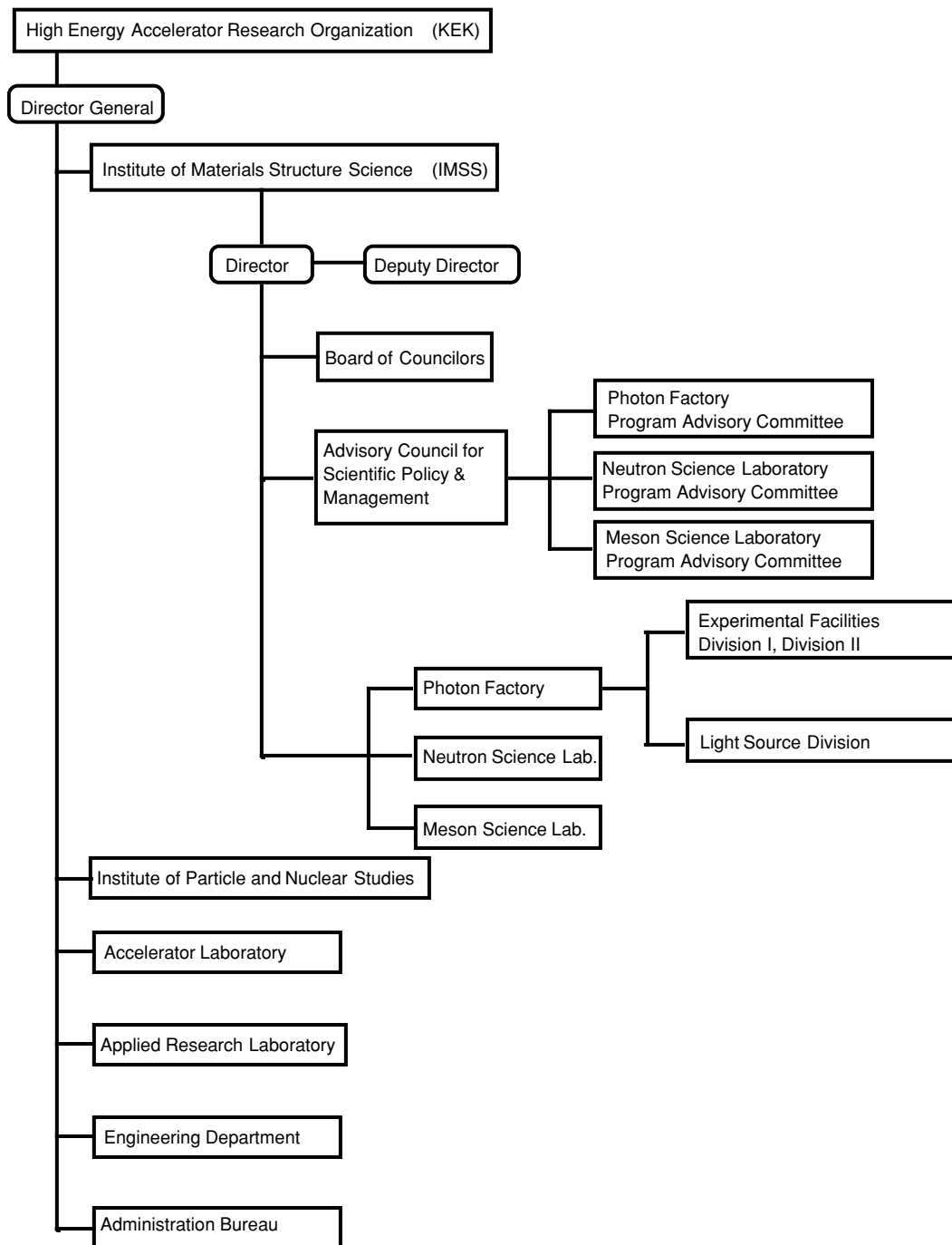


Figure 2.
Organization chart of KEK.

Table 1. Members of Board of Councilors of IMSS.

AWAYA, Yoko	Musashino Art University
CHIKAWA, Jun-ichi	CAST Hyogo
FUJIMORI, Hiroyasu	The Research Institute for Electric and Magnetic Materials
FUKUYAMA, Hidetoshi	The Institute for Solid State Physics, The University of Tokyo
GOHSHI, Yohichi	National Institute for Environmental Studies
HIROTA, Eiji	The Graduate University of Advanced Studies
ITO, Mitsuo	Okazaki National Research Institute
KAMITSUBO, Hiromichi	The Institute of Physical and Chemical Research
KITAHARA, Yasuo	University of Tsukuba
KURODA, Haruo**	The Science University of Tokyo
KYOGOKU, Yoshimasa	Fukui University of Technology
NAGAOKA, Yosuke*	Kansai University
OGIUE, Koichi	Tokyo Metropolitan University
SAHARA, Makoto	National Museum of Japanese History
SASAKI, Kazuo	Okazaki National Research Institute
SUGANO, Takuo	Toyo University
TAKAYANAGI, Kazuo	The University of Tokyo
TAKEDA, Yasutsugu	Hitachi, Ltd.
YAMADA, Yasusada	Waseda University
YASUOKA, Hiroshi	Japan Atomic Energy Research Institute

Table 2. Members of Advisory Council for Scientific Policy and Management of IMSS.

ARAI, Masatoshi	Neutron Science Laboratory, IMSS
ENDO, Yasuo	Tohoku University
FUJII, Yasuhiko	The University of Tokyo
GO, Nobuhiro	Kyoto University
IIDA, Atsuo	Photon Factory , IMSS
IKEDA, Susumu	Neutron Science Laboratory, IMSS
KOBAYASHI, Masanori	Photon Factory, IMSS
KUROKAWA, Shinichi	Accelerator Laboratory, KEK
MATSUSHITA, Tadashi**	Photon Factory, IMSS
NAGAMINE, Kanetada	Meson Science Laboratory, IMSS
NISHIDA, Nobuhiko	Tokyo Institute of Technology
OHSUMI, Kazumasa	Photon Factory , IMSS
OHTA, Toshiaki	The University of Tokyo
OSHIMA, Masaharu	The University of Tokyo
SHIBATA, Tokushi	Applied Research Laboratory, KEK
SUEMATSU, Hiroyoshi*	The University of Tokyo
TAKATA, Koji	Accelerator Laboratory, KEK
TSUJI, Kazuhiko	Keio University
TSUKIHARA, Tomitake	Osaka University
YAGISHITA, Akira	Photon Factory , IMSS
YOSHIWARA, Keitaro	Japan Advanced Institute of Science and Technology

* Chairman ** Vice-Chairman

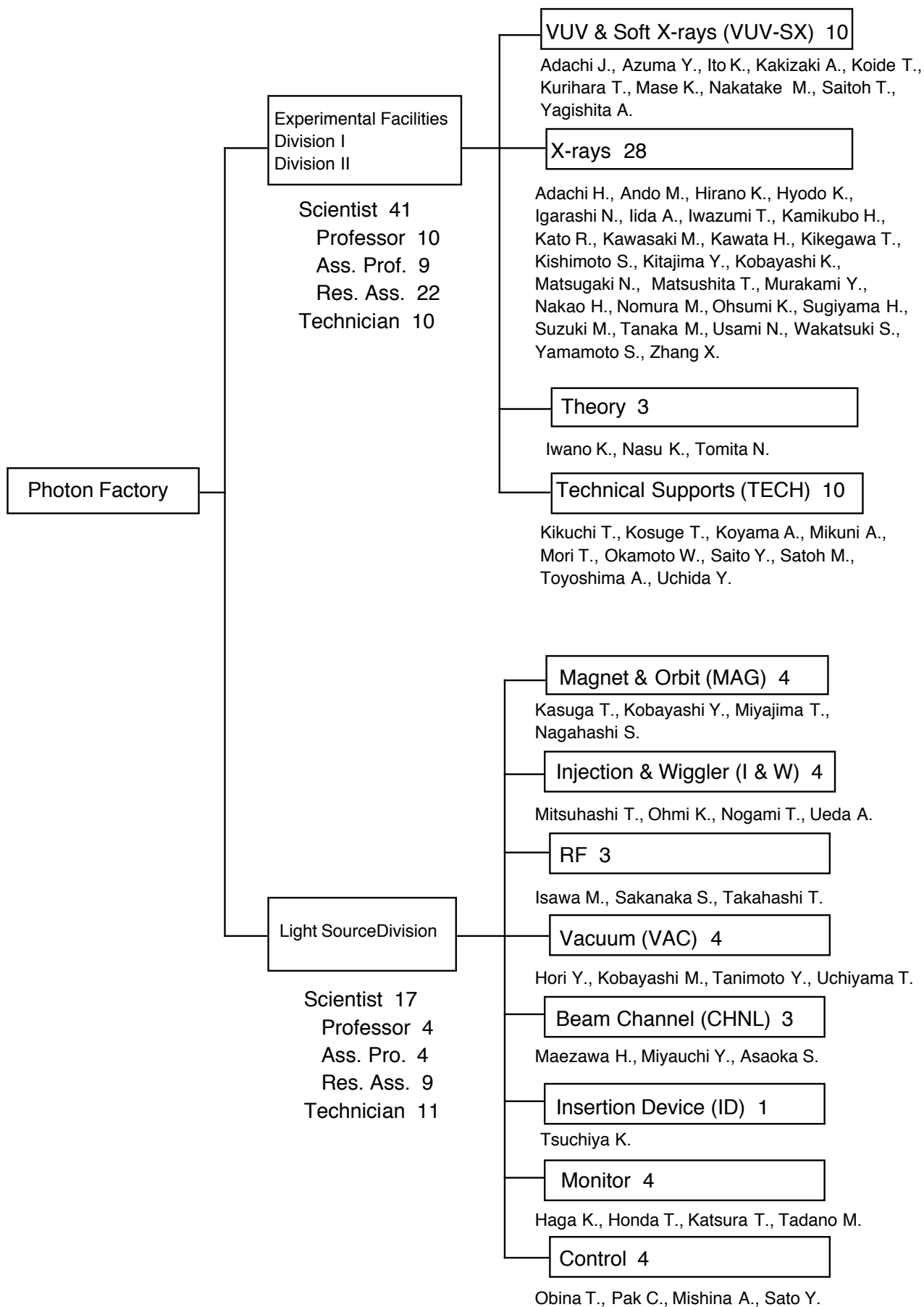


Figure 3. Organization chart of PF (as of March 31, 2001). Prof. Kakizaki, Prof. Murakami and Dr. Kamikubo left the PF in 2001 spring.

Table 3. Staff members of the Photon Factory.

Name	Responsibility	e-mail address	
Research Staff			
MATSUSHITA, Tadashi	Director	tadashi.matsushita@kek.jp	
Experimental Facilities Division I & II			
ADACHI, Hiromichi	X-rays	hiromichi.adachi@kek.jp	
ADACHI, Junichi	VUV-SX	jun-ichi.adachi@kek.jp	
ANDO, Masami	X-rays	masami.ando@kek.jp	
AZUMA, Yoshiro	VUV-SX	yoshiro.azuma@kek.jp	
HIRANO, Keiichi	X-rays	keiichi.hirano@kek.jp	
HYODO, Kazuyuki	X-rays	kazuyuki.hyodo@kek.jp	
IGARASHI, Noriyuki	X-rays	noriyuki.igarashi@kek.jp	
IIDA, Atsuo	X-rays	atsuo.iida@kek.jp	
ITO, Kenji	VUV-SX	kenji.ito@kek.jp	
IWANO, Kaoru	Theory	kaoru.iwano@kek.jp	
IWAZUMI, Toshiaki	X-rays	toshiaki.iwazumi@kek.jp	
KAKIZAKI, Akito	VUV-SX		
KAMIKUBO, Hironari	X-rays		~ Mar. 31, 2001
KATO, Ryuichi	X-rays	rkato@pfweis.kek.jp	Jan. 16, 2001 ~
KAWASAKI, Masato	X-rays	kawasaki@pfweis.kek.jp	Jan. 1, 2001 ~
KAWATA, Hiroshi	X-rays	hiroshi.kawata@kek.jp	
KIKEGAWA, Takumi	X-rays	takumi.kikegawa@kek.jp	
KISHIMOTO, Shunji	X-rays	syunji.kishimoto@kek.jp	
KITAJIMA, Yoshinori	X-rays	yoshinori.kitajima@kek.jp	
KOBAYASHI, Katsumi	X-rays	katsumi.kobayashi@kek.jp	
KOIDE, Tsuneharu	VUV-SX	tsuneharu.koide@kek.jp	
KURIHARA, Toshikazu	VUV-SX	toshikazu.kurihara@kek.jp	
MASE, Kazuhiko	VUV-SX	kazuhiko.mase@kek.jp	
MATSUGAKI, Naohiro	X-rays	mtgk@pofweis.kek.jp	Dec. 16, 2000 ~
MURAKAMI, Youichi	X-rays		~ Mar. 31, 2001
NAKAO, Hironori	X-rays	hironori.nakao@kek.jp	
NAKATAKE, Masashi	VUV-SX	masashi.nakatake@kek.jp	Dec. 16, 2000 ~
NASU, Keiichiro	Theory	knasu@nasuws4.kek.jp	
NOMURA, Masaharu	X-rays	masaharu.nomura@kek.jp	
OHSUMI, Kazumasa	X-rays	kazumasa.ohsumi@kek.jp	
SAITOH, Tomohiko	VUV-SX	tomohiko.saitoh@kek.jp	
SUGIYAMA, Hiroshi	X-rays	hiroshi.sugiyama@kek.jp	
SUZUKI, Mamoru	X-rays	mamoru.suzuki@kek.jp	
TANAKA, Masahiko	X-rays	masahiko.tanaka.pf@kek.jp	
TOMITA, Norikazu	Theory	tomita@nasuws4.kek.jp	

Name	Responsibility	e-mail address	
USAMI, Noriko	X-rays	noriko.usami@kek.jp	
WAKATSUKI, Soichi	X-rays	soichi.wakatsuki@kek.jp	May 16, 2000 ~
YAGISHITA, Akira	VUV-SX	akira.yagishita@kek.jp	
YAMAMOTO, Shigeru	X-rays	shigeru.yamamoto@kek.jp	
ZHANG, Xiaowei	X-rays	zhang.xiaowei@kek.jp	
Light Source Divison			
HAGA, Kaiichi	MONITOR	kaiichi.haga@kek.jp	
HONDA, Tohru	MONITOR	tohru.honda@kek.jp	
HORI, Yoichiro	VAC	yoichiro.hori@kek.jp	
ISAWA, Masaaki	RF	isawa@post.kek.jp	
KASUGA, Toshio	MAG	kasugat@post.kek.jp	
KATSURA, Tomotaro	MONITOR	tomotaro.katsura@kek.jp	
KOBAYASHI, Masanori	VAC	masanori.kobayashi@kek.jp	
KOBAYASHI, Yukinori	MAG	yukinori.kobayashi@kek.jp	
MAEZAWA, Hideki	CHNL	hideki.maezawa@kek.jp	
MITSUHASHI, Toshiyuki	I&W	toshiyuki.mitsubishi@kek.jp	
MIYAUCHI, Hiroshi	CHNL	hiroshi.miyauchi@kek.jp	Aug. 16, 2000 ~
OBINA, Takashi	CONTROL	takashi.obina@kek.jp	
OHMI, Kazuhito	I&W	kazuhito.ohmi@kek.jp	
PAK, Cheol On	CONTROL	cheol-on.pak@kek.jp	
SAKANAKA, Shogo	RF	shogo.sakanaka@kek.jp	
TANIMOTO, Yasunori	VAC	yasunori.tanimoto@kek.jp	
TSUCHIYA, Kimichika	ID	kimichika.tsuchiya@kek.jp	
Technical Staff			
Experimental Facilities Division I & II			
KIKUCHI, Takashi	TECH	takashi.kikuchi@kek.jp	
KOSUGE, Takashi	TECH	takashi.kosuge@kek.jp	
KOYAMA, Atsushi	TECH	atsushi.koyama@kek.jp	
MIKUNI, Akira	TECH	akira.mikuni@kek.jp	
MORI, Takeharu	TECH	takeharu.mori@kek.jp	
OKAMOTO, Wataru	TECH	wataru.okamoto@kek.jp	
SAITO, Yuuki	TECH	yuuki.saito@kek.jp	
SATOH, Masato	TECH	masato.satoh@kek.jp	
TOYOSHIMA, Akio	TECH	akio.toyoshima@kek.jp	
UCHIDA, Yoshinori	TECH	yoshinori.uchida@kek.jp	
Light Source Division			
ASAOKA, Seiji	CHNL	seiji.asaoka@kek.jp	
MISHINA, Atsushi	CONTROL	Atsushi.MISHINA@kek.ac.jp	

Name	Responsibility	e-mail address	
MIYAJIMA, Tsukasa	CHNL	tsukasa.miyajima@kek.jp	
NAGAHASHI, Shinya	MAG	shinya.nagahashi@kek.jp	Oct. 1, 2000 ~
NOGAMI, Takashi	I&W	takashi.nogami@kek.jp	
SATO, Yoshihiro	CONTROL	yoshihiro.sato@kek.jp	
SHIOYA, Tatsuro	ID	tatsuro.shioya@kek.jp	
TADANO, Mikito	MONITOR	mikito.tadano@kek.jp	
TAKAHASHI, Takeshi	RF	takeshi.takahashi@kek.jp	
UCHIYAMA, Takashi	VAC	takashi.uchiyama@kek.jp	
UEDA, Akira	I&W	akira.ueda@kek.jp	
Guest Professor			
HYODO, Toshio	(The Univ. of Tokyo)		
KATAOKA, Mikio	(Nara Inst. Sci. Tech.)		
KATO, Masahiro	(IMS)		
OSHIMA, Masaharu	(The Univ. of Tokyo)		
COE Staff			
AN, Ki-Seok			~ Jul. 31, 2000
HUAI, Ping		huai@post.kek.jp	Dec. 25, 2000 ~
KOBAYASHI, Eiichi		eiichik@post.kek.jp	Jan. 16, 2001 ~
MATSUMOTO, Isao		imatsu@post.kek.jp	Dec. 16, 2000 ~
MIZOUCHI, Hideo			~ Dec. 15, 2000
OHSUMI, Hiroyuki			Apr. 1, 2000 ~ Mar. 31, 2001
SAITOH, Akihiro			~ Sep. 15, 2000
SEKINE, Taketoshi			~ Mar. 31, 2001
SUZUKI, Tadayuki		tysuzuki@post.kek.jp	Jan. 1, 2001 ~
YOSHII, Hiroshi			~ Mar. 31, 2001
Students of The Graduate University for Advanced Studies			
HUAI, Ping			~ Sep. 30, 2000
MIYATA, Yoshikazu			Apr. 1, 2000 ~
MORIMOTO, Osamu			Apr. 1, 2000 ~
NAKAJIMA, Hideki			
OHSAWA, Hitoshi			Oct. 1, 2000 ~
RAHMAN Md. Obaidur			
TAKAHASHI, Yumiko			~ Mar. 31, 2001
YABUKI, Ryotaro			Apr. 1, 2000 ~
YAMAZAKI, Masahiro			