

# 1. Site and Organization



Figure 1  
Aerial view of the KEK campus.



KEK consists of four research institutions, i.e., the Institute of Materials Structure Science (IMSS), the Institute of Particle and Nuclear Studies, the Accelerator Laboratory and the Applied Research Laboratory. The PF is a part of the IMSS together with the Neutron Science Laboratory and the Meson Science Laboratory, as shown in Fig. 2. The members of the Board of Councilors and the

Advisory Council for Scientific Policy and Management of the IMSS are listed in Tables 1 and 2. The organization chart of the PF is shown in Fig. 3. The PF consists of three divisions, i.e. the Experimental Facility Divisions I and II, and the Light Source Division. The PF staff members are listed in Table 3.

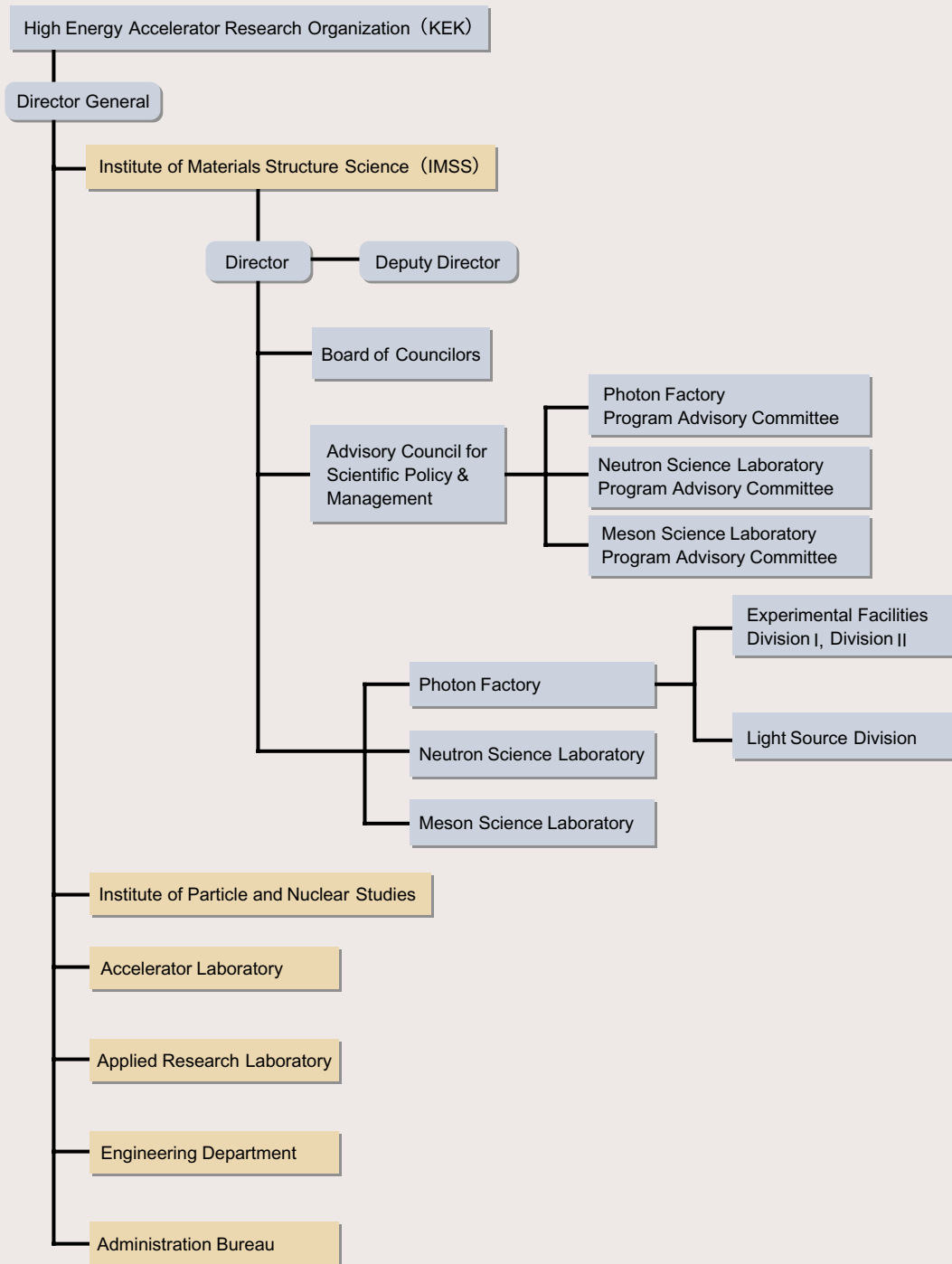


Figure 2  
Organization chart of KEK.



Table 1 Members of Board of Councilors.

AWAYA, Yoko	Musashino Art University
CHIKAWA, Jyunichi	CAST Hyogo
FUKUYAMA, Hidetoshi	The University of Tokyo
GO, Nobuhiro**	Japan Atomic Energy Research Institute
GOHSHI, Yohichi	National Institute for Environmental Studies
HOTTA, Yoshiki	National Institute of Genetics
KAMIMURA, Hiroshi	Tokyo University of Science
KAMITSUBO, Hiromichi	The Institute of Physical and Chemical Research
KAYA, Kohji	Okazaki National Research Institute
KITAHARA, Yasuo	University of Tsukuba
KOBAYASHI, Shunichi	The Institute of Physical and Chemical Research
KODAIRA, Keiichi	The Graduate University for Advanced Studies
KOMA, Atsushi	The University of Tokyo
KURODA, Haruo*	Tokyo University of Science
KYOGOKU, Yoshimasa	Fukui University of Technology
OGIUE, Koichi	Tokyo Metropolitan University
OKUSHIMA, Takayasu	Waseda University
TAKEDA, Yasutsugu	Hitachi Ltd.
YAMADA, Yasusada	Waseda University
YASUOKA, Hiroshi	Japan Atomic Energy Research Institute

Table 2 Members of Advisory Council for Scientific Policy &amp; Management.

AKIMITSU, Jun	Aoyama Gakuin University
ENDO, Yasuo**	Tohoku University
FUJII, Yasuhiko	The University of Tokyo
FURUSAKA, Michihiro	Neutron Science Lab., IMSS
IIDA, Atsuo	Photon Factory, IMSS
IKEDA, Susumu	Neutron Science Lab., IMSS
KOBAYASHI, Masanori	Photon Factory, IMSS
KOSUGI, Nobuhiro	Okazaki National Research Institute
KUROKAWA, Shinichi	Accelerator Lab., KEK
MATSUSHITA, Tadashi*	Photon Factory, IMSS
MIKI, Kunio	Kyoto University
NAGAMINE, Kanetada	Meson Science Lab., IMSS
NISHIDA, Nobuhiko	Tokyo Institute of Technology
NOMURA, Masaharu	Photon Factory, IMSS
OHSUMI, Kazumasa	Photon Factory, IMSS
OHTA, Toshiaki	The University of Tokyo
OSHIMA, Masaharu	The University of Tokyo
SATO, Kotaro	Accelerator Lab., KEK
SHIBATA, Tokushi	Applied Research Lab., KEK
SHIMOMURA, Osamu	Japan Atomic Energy Research Institute
TSUKIHARA, Tomitake	Osaka University

\* Chairman \*\* Vice-Chairman

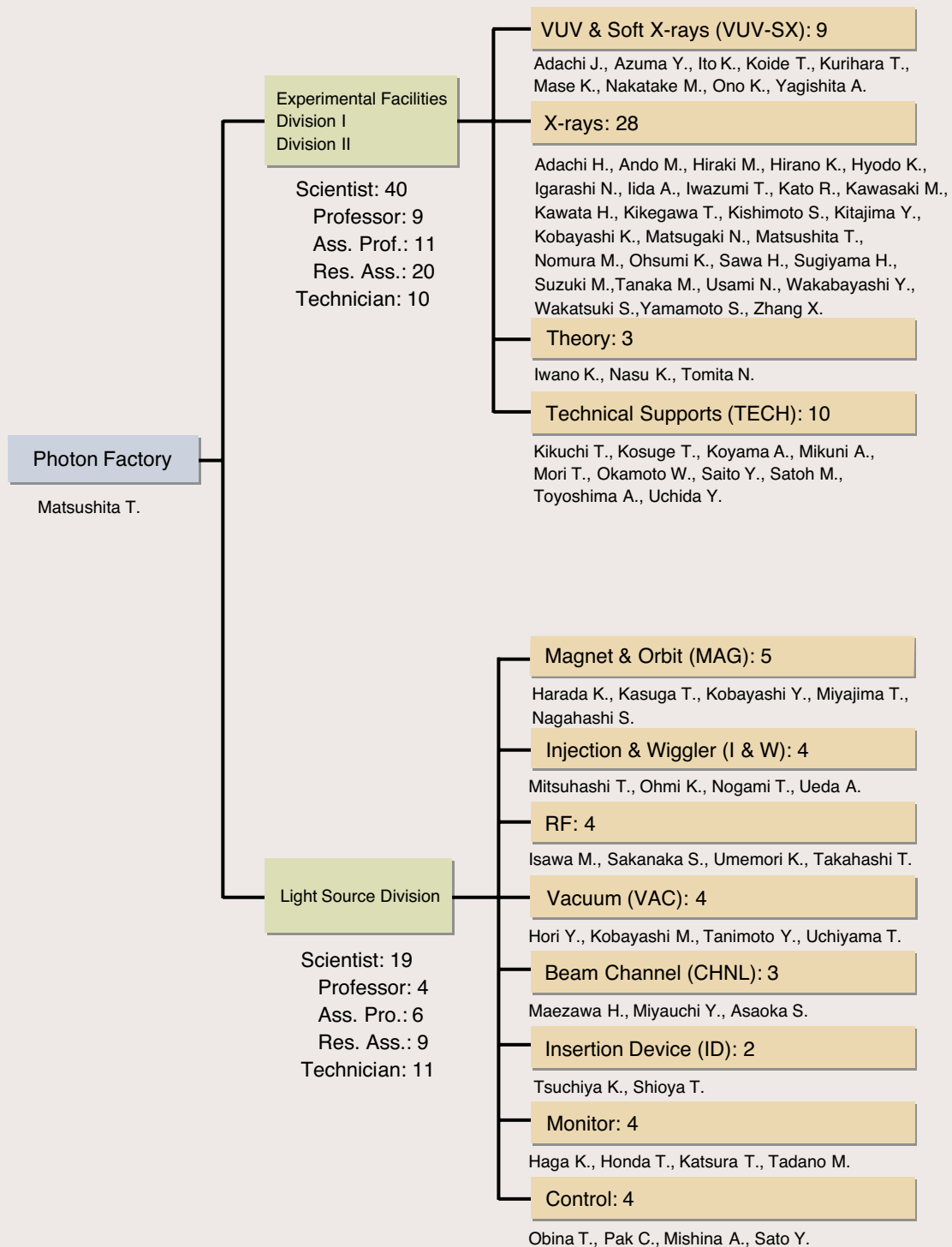


Figure 3  
Organization chart of PF (as of March 31, 2003) .

Table 3 Staff members of the Photon Factory

<b>Research Staff</b>			
<b>Director</b>			
MATSUSHITA, Tadashi	Director	tadashi.matsushita@kek.jp	
<b>Experimental Facilities Division I &amp; II</b>			
ADACHI, Hiromichi	X-rays	hiromichi.adachi@kek.jp	
ADACHI, Junichi	VUV-SX	jun-ichi.adachi@kek.jp	
ANDO, Masami	X-rays	masami.ando@kek.jp	
AZUMA, Yoshiro	VUV-SX	yoshiro.azuma@kek.jp	
HIRAKI, Masahiko	X-rays	masahiko.hiraki@kek.jp	Apr. 1, 2002~
HIRANO, Keiichi	X-rays	keiichi.hirano@kek.jp	
HYODO, Kazuyuki	X-rays	kazuyuki.hyodo@kek.jp	
IGARASHI, Noriyuki	X-rays	noriyuki.igarashi@kek.jp	
IIDA, Atsuo	X-rays	atsuo.iida@kek.jp	
ITO, Kenji	VUV-SX	kenji.ito@kek.jp	
IWANO, Kaoru	Theory	kaoru.iwano@kek.jp	
IWAZUMI, Toshiaki	X-rays	toshiaki.iwazumi@kek.jp	
KATO, Ryuichi	X-rays	ryuichi.kato@kek.jp	
KAWASAKI, Masato	X-rays	kawasaki@pfweis.kek.jp	
KAWATA, Hiroshi	X-rays	hiroshi.kawata@kek.jp	
KIKEGAWA, Takumi	X-rays	takumi.kikegawa@kek.jp	
KISHIMOTO, Shunji	X-rays	shunji.kishimoto@kek.jp	
KITAJIMA, Yoshinori	X-rays	yoshinori.kitajima@kek.jp	
KOBAYASHI, Katsumi	X-rays	katsumi.kobayashi@kek.jp	
KOIDE, Tsuneharu	VUV-SX	tsuneharu.koide@kek.jp	
KURIHARA, Toshikazu	VUV-SX	toshikazu.kurihara@kek.jp	
MASE, Kazuhiko	VUV-SX	kazuhiko.mase@kek.jp	
MATSUGAKI, Naohiro	X-rays	naohiro.matsugaki@kek.jp	
NAKATAKE, Masashi	VUV-SX		~Mar. 31, 2003
NASU, Keiichiro	Theory	keiichiro.nasu@kek.jp	
NOMURA, Masaharu	X-rays	masaharu.nomura@kek.jp	
OHSUMI, Kazumasa	X-rays	kazumasa.ohsumi@kek.jp	
ONO, Kanta	VUV-SX	kanta.ono@kek.jp	Nov. 1, 2002~
SAWA, Hiroshi	X-rays	hiroshi.sawa@kek.jp	
SUGIYAMA, Hiroshi	X-rays	hiroshi.sugiyama@kek.jp	
SUZUKI, Mamoru	X-rays	mamoru.suzuki@kek.jp	
TANAKA, Masahiko	X-rays	masahiko.tanaka.pf@kek.jp	
TOMITA, Norikazu	Theory	tomita@nasuws4.kek.jp	
USAMI, Noriko	X-rays	noriko.usami@kek.jp	
WAKABAYASHI, Yusuke	X-rays	yusuke.wakabayashi@kek.jp	
WAKATSUKI, Soichi	X-rays	soichi.wakatsuki@kek.jp	
YAGISHITA, Akira	VUV-SX	akira.yagishita@kek.jp	
YAMAMOTO, Shigeru	X-rays	shigeru.yamamoto@kek.jp	
ZHANG, Xiaowei	X-rays	zhang.xiaowei@kek.jp	
<b>Light Source Divison</b>			
HAGA, Kaiichi	MONITOR	kaiichi.haga@kek.jp	
HARADA, Kentaro	MAG	kentaro.harada@kek.jp	Apr. 1, 2002~
HONDA, Tohru	MONITOR	tohru.honda@kek.jp	
HORI, Yoichiro	VAC	yoichiro.hori@kek.jp	
ISAWA, Masaaki	RF	isawa@post.kek.jp	
KASUGA, Toshio	MAG	kasugat@post.kek.jp	
KATSURA, Tomotaro	MONITOR		
KOBAYASHI, Masanori	VAC	masanori.kobayashi@kek.jp	
KOBAYASHI, Yukinori	MAG	yukinori.kobayashi@kek.jp	
MAEZAWA, Hideki	CHNL	hideki.maezawa@kek.jp	
MITSUHASHI, Toshiyuki	I&W	toshiyuki.mitsuhashi@kek.jp	

MIYAUCHI, Hiroshi	CHNL	hiroshi.miyauchi@kek.jp	
OBINA, Takashi	CONTROL	takashi.obina@kek.jp	
OHMI, Kazuhito	I&W	kazuhito.ohmi@kek.jp	~Nov. 1, 2002
PAK, Cheol On	CONTROL	cheol-on.pak@kek.jp	
SAKANAKA, Shogo	RF	shogo.sakanaka@kek.jp	
TANIMOTO, Yasunori	VAC	yasunori.tanimoto@kek.jp	
TSUCHIYA, Kimichika	ID	kimichika.tsuchiya@kek.jp	
UMEMORI, Kensei	RF	kensei.umemori@kek.jp	Apr. 1, 2002~

### Technical Staff

#### Experimental Facilities Division I & II

KIKUCHI, Takashi	TECH	takashi.kikuchi@kek.jp	
KOSUGE, Takashi	TECH	takashi.kosuge@kek.jp	
KOYAMA, Atsushi	TECH	atsushi.koyama@kek.jp	
MIKUNI, Akira	TECH	akira.mikuni@kek.jp	
MORI, Takeharu	TECH	takeharu.mori@kek.jp	
OKAMOTO, Wataru	TECH	wataru.okamoto@kek.jp	
SAITO, Yuuki	TECH	yuuki.saito@kek.jp	
SATOH, Masato	TECH	masato.satoh@kek.jp	
TOYOSHIMA, Akio	TECH	akio.toyoshima@kek.jp	
UCHIDA, Yoshinori	TECH	yoshinori.uchida@kek.jp	

#### Light Source Division

ASAOKA, Seiji	CHNL	seiji.asaoka@kek.jp	
MISHINA, Atsushi	CONTROL	Atsushi.MISHINA@kek.jp	
MIYAJIMA, Tsukasa	CHNL	tsukasa.miyajima@kek.jp	
NAGAHASHI, Shinya	MAG	shinya.nagahashi@kek.jp	
NOGAMI, Takashi	I&W	takashi.nogami@kek.jp	
SATO, Yoshihiro	CONTROL	yoshihiro.sato@kek.jp	
SHIOYA, Tatsuro	ID	tatsuro.shioya@kek.jp	
TADANO, Mikito	MONITOR	mikito.tadano@kek.jp	
TAKAHASHI, Takeshi	RF	takeshi.takahashi@kek.jp	
UCHIYAMA, Takashi	VAC	takashi.uchiyama@kek.jp	
UEDA, Akira	I&W	akira.ueda@kek.jp	

### Guest Professor

ASAKURA, Kiyotaka	(Hokkaido Univ.)		
KATO, Masahiro	(IMS)		
KITAMURA, Hideo	(SPring-8)		
MURAKAMI, Youichi	(Tohoku Univ.)		
OSHIMA, Masaharu	(The Univ. of Tokyo)		
SASAKI, Satoshi	(Tokyo Inst. Tech.)		
TAKAHASHI, Toshio	(The Univ. of Tokyo)		

### COE Staff

HIKOSAKA, Yasumasa	hikosaka@post.kek.jp	
HARRIES, James	harries@nabiki.kek.jp	Jan. 20, 2003~
KOBAYASHI, Eiichi		~Jan. 15, 2003
MANAKA, Hirota		~Oct. 1, 2002
MATSUMOTO, Isao		~Nov. 30, 2002
NAKAGAWA, Takeshi	taknak@post.kek.jp	Apr. 16, 2002~
NOGI, Terukazu		~May 20, 2002
NOZAWA, Shunsuke	shunsuke.nozawa@kek.jp	Jan. 1, 2003~
SUZUKI, Tadayuki		~Dec. 31, 2002
TODA, Mitsuru	mtoda@post.kek.jp	
YAMAZAKI, Masahiro	yamama@post.kek.jp	Apr. 16, 2002~

---

**The Graduate University for Advanced Studies**

---

INOUE, Michio	Apr. 1, 2002~
KAI, Ji	
CHAVAS, Leonard	Oct. 2, 2002~
MAKSIMENKO, Anton	
MIYATA, Yoshikazu	
MIZUSAWA, Atsushi	
MORIMOTO, Osamu	
OBARA, Satoshi	Apr. 1, 2002~
OSAWA, Hitoshi	
TOKI, Makoto	Apr. 1, 2002~
UCHIYAMA, Hidefumi	
YABUKI, Ryotaro	
YAMADA, Yusuke	Apr. 1, 2002~