

1. Site and Organization



Figure 1
Aerial view of the KEK campus.

1. PF Light Source Building
Experimental Hall
2. PF Office Building
3. PF Preparation Laboratory
4. PF-AR (PF Advanced Ring)
5. PF-AR Experimental Hall
6. PF Structural Biology Building
7. PF/KEKB (KEK B-Factory) Injector Linac
8. Slow Positron Facility
9. Neutron Science Laboratory
10. Muon Science Laboratory
11. PS (Proton Synchrotron) Main Ring
12. PS East Experimental Hall
13. PS North Experimental Hall
14. PS Booster
15. PS Injector Linac
16. Neutrino Beamline
17. Building No.4 (IMSS Office)
18. Library/PR Office
19. Dormitory/Guest House
20. Restaurant/Cafeteria
21. Administration Building
22. Radiation Science Center
23. Computing Research Center
24. Cryogenics Science Center
25. Mechanical Engineering Center
26. KEKB LER (Low Energy Ring) and
HER (High Energy Ring)
27. KEKB Tsukuba Laboratory (BELLE Detector)
28. KEKB Oho Laboratory
29. KEKB Fuji Laboratory
30. KEKB Nikko Laboratory
31. ATF (Accelerator Test Facility)
32. KEK International Center/Users Office
33. Information Center



KEK consists of four research institutions, i.e., the Institute of Materials Structure Science (IMSS), the Institute of Particle and Nuclear Studies, the Accelerator Laboratory and the Applied Research Laboratory. The PF is a part of the IMSS together with the Neutron Science Laboratory and the Meson Science Laboratory, as shown in Fig. 2. The members of the Board of Councilors and the

Advisory Council for Scientific Policy and Management of the IMSS are listed in Tables 1 and 2. The organization chart of the PF is shown in Fig. 3. The PF consists of three divisions, i.e. the Experimental Facility Divisions I and II, and the Light Source Division. The PF staff members are listed in Table 3.

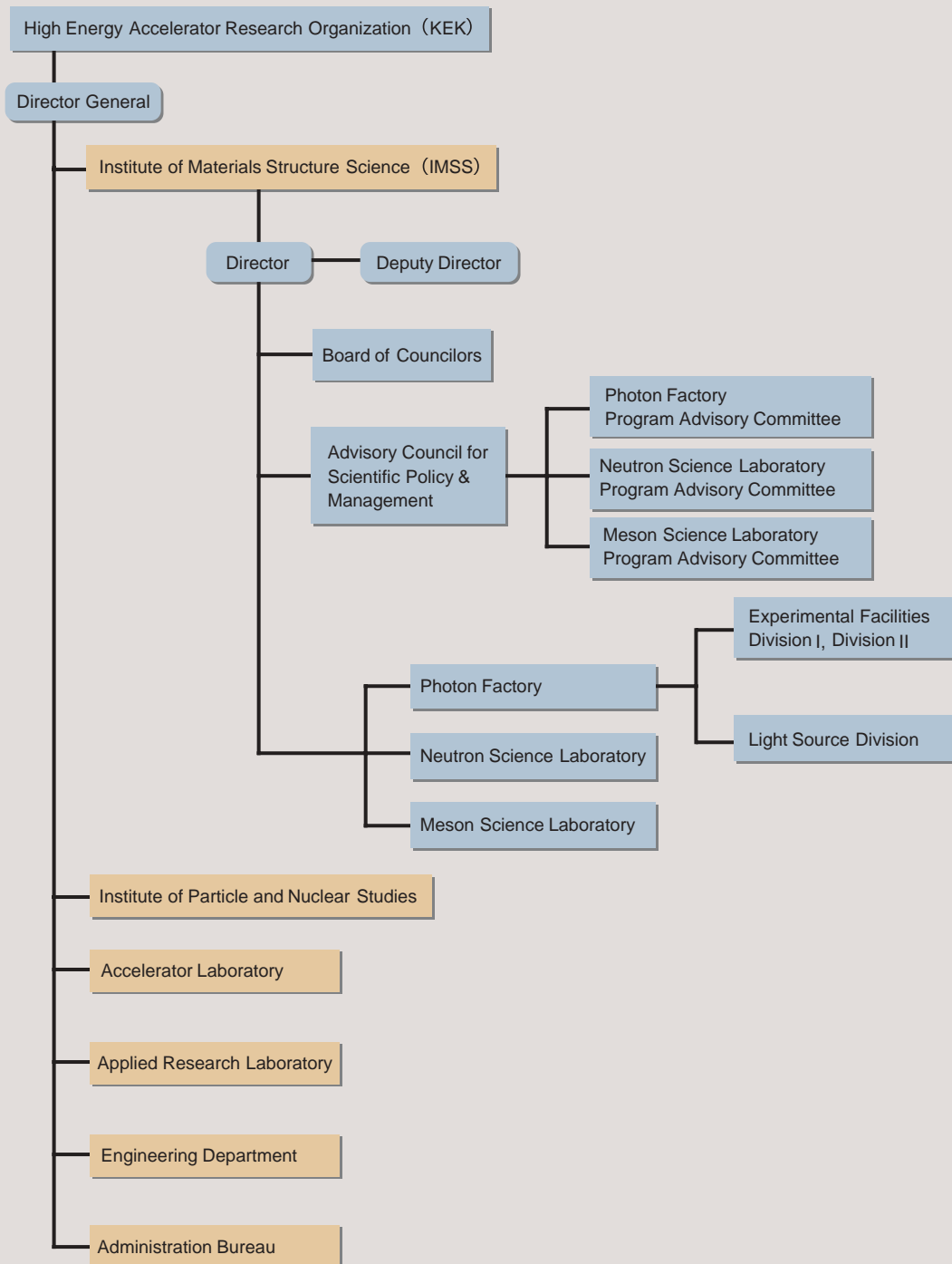


Figure 2
Organization chart of KEK.

Table 1 Members of Board of Councilors.

AWAYA, Yoko	Musashino Art University
CHIKAWA, Jyunichi	CAST Hyogo
FUKUYAMA, Hidetoshi	The University of Tokyo
GO, Nobuhiro**	Japan Atomic Energy Research Institute
GOHSHI, Yohichi	National Institute for Environmental Studies
HOTTA, Yoshiki	National Institute of Genetics
KAMIMURA, Hiroshi	Tokyo University of Science
KAMITSUBO, Hiromichi	SPring-8
KAYA, Koji	Okazaki National Research Institute
KITAHARA, Yasuo	University of Tsukuba
KOBAYASHI, Toshikazu	The Institute of Physical and Chemical Research
KODAIRA, Keiichi	The Graduate of University for Advanced Studies
KURODA, Haruo*	Tokyo University of Science
MOGI, Toshihiko	Tokyo Metropolitan University
SHIRAI, Katsuhiko	Waseda University
TAKEDA, Yasutsugu	Hitachi Ltd.
UEDA, Kazuo	The University of Tokyo
YAMADA, Yasusada	Waseda University
YASUOKA, Hiroshi	Japan Atomic Energy Research Institute
YASUOKA, Noritake	RIKEN

Table 2 Members of Advisory Council for Scientific Policy & Management.

AKIMITSU, Jun	Aoyama Gakuin University
ENDO, Yasuo**	Tohoku University
IIDA, Atsuo	Photon Factory , IMSS
IKEDA, Susumu	Neutron Science Lab., IMSS
KAWATA, Hiroshi	Photon Factory , IMSS
KOBAYASHI, Masanori	Photon Factory, IMSS
KUROKAWA, Shinichi	Accelerator Lab., KEK
MATSUSHITA, Tadashi*	Photon Factory, IMSS
NAGAMINE, Kanetada	Meson Science Lab., IMSS
NISHIDA, Nobuhiko	Tokyo Institute & Technology
NISHIYAMA, Kusuo	Meson Science Lab., IMSS
NOMURA, Masaharu	Photon Factory, IMSS
OHTA, Toshiaki	The University of Tokyo
OSHIMA, Masaharu	The University of Tokyo
SAKATA, Makoto	Nagoya University
SATO, Kotaro	Accelerator Lab., KEK
SHIBATA, Tokushi	Applied Research Lab., KEK
SHIMOMURA, Osamu	Japan Atomic Energy Research Institute
TANAKA, Kenichiro	Hiroshima University
TSUKIHARA, Tomitake	Osaka University
YAMADA, Kazuyoshi	Tohoku University

* Chairman ** Vice-Chairman

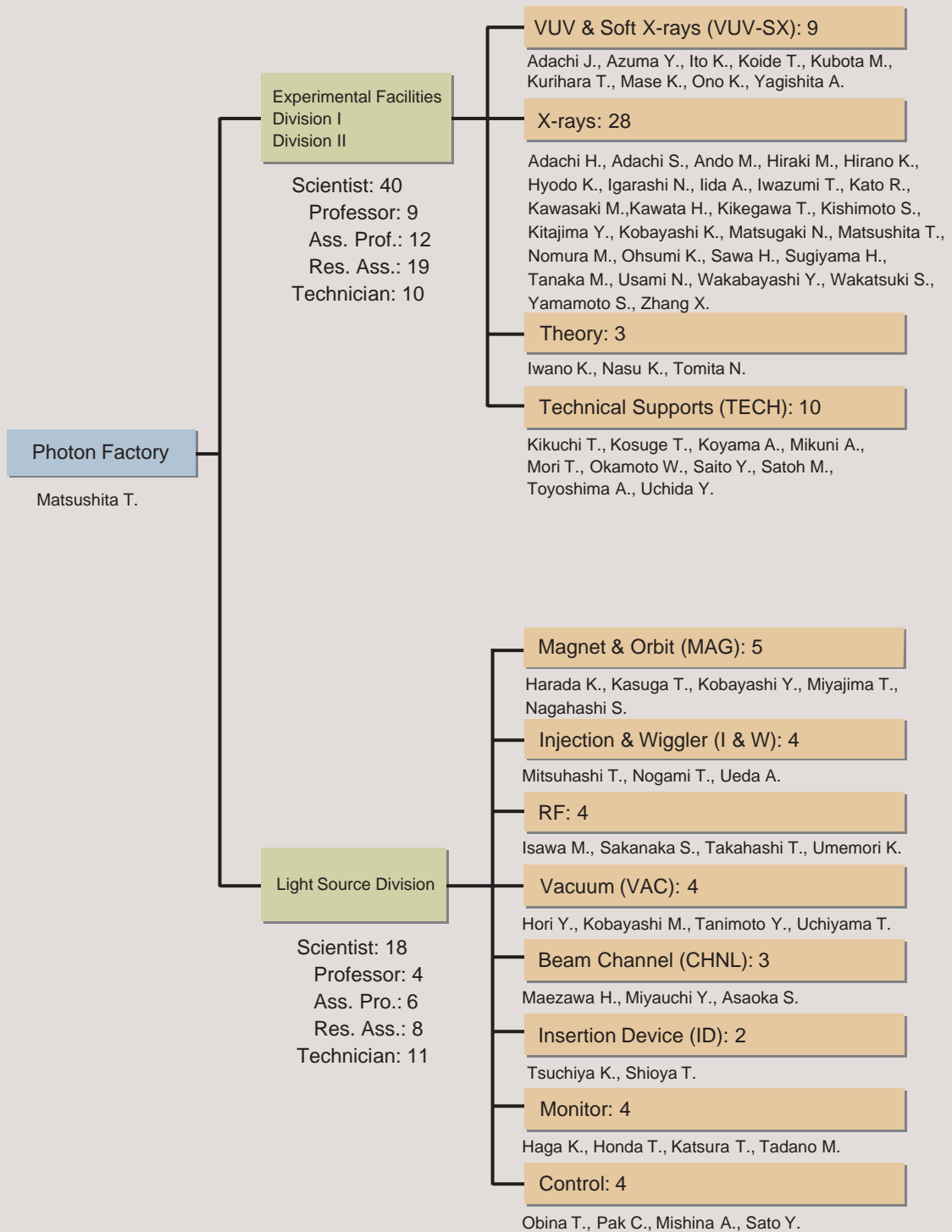


Figure 3
Organization chart of PF (as of March 31, 2003) .

Table 3 Staff members of the Photon Factory

Research Staff			
Director			
MATSUSHITA, Tadashi	Director	tadashi.matsushita@kek.jp	
Experimental Facilities Division I & II			
ADACHI, Hiromichi	X-rays	hiromichi.adachi@kek.jp	
ADACHI, Jun-ichi	VUV-SX	jun-ichi.adachi@kek.jp	
ADACHI, Shinichi	X-rays	shinichi.adachi@kek.jp	Aug. 1, 2003~
ANDO, Masami	X-rays	masami.ando@kek.jp	
AZUMA, Yoshiro	VUV-SX	yoshiro.azuma@kek.jp	
HIRAKI, Masahiko	X-rays	masahiko.hiraki@kek.jp	
HIRANO, Keiichi	X-rays	keiichi.hirano@kek.jp	
HYODO, Kazuyuki	X-rays	kazuyuki.hyodo@kek.jp	
IGARASHI, Noriyuki	X-rays	noriyuki.igarashi@kek.jp	
IIDA, Atsuo	X-rays	atsuo.iida@kek.jp	
ITO, Kenji	VUV-SX	kenji.ito@kek.jp	
IWANO, Kaoru	Theory	kaoru.iwano@kek.jp	
IWAZUMI, Toshiaki	X-rays	toshiaki.iwazumi@kek.jp	
KATO, Ryuichi	X-rays	ryuichi.kato@kek.jp	
KAWASAKI, Masato	X-rays	kawasaki@pfweis.kek.jp	
KAWATA, Hiroshi	X-rays	hiroshi.kawata@kek.jp	
KIKEGAWA, Takumi	X-rays	takumi.kikegawa@kek.jp	
KISHIMOTO, Shunji	X-rays	shunji.kishimoto@kek.jp	
KITAJIMA, Yoshinori	X-rays	yoshinori.kitajima@kek.jp	
KOBAYASHI, Katsumi	X-rays	katsumi.kobayashi@kek.jp	
KOIDE, Tsuneharu	VUV-SX	tsuneharu.koide@kek.jp	
KUBOTA, Masato	VUV-SX	masato.kubota@kek.jp	May 16, 2003~
KURIHARA, Toshikazu	VUV-SX	toshikazu.kurihara@kek.jp	
MASE, Kazuhiko	VUV-SX	kazuhiko.mase@kek.jp	
MATSUGAKI, Naohiro	X-rays	naohiro.matsugaki@kek.jp	
NASU, Keiichiro	Theory	keiichiro.nasu@kek.jp	
NOMURA, Masaharu	X-rays	masaharu.nomura@kek.jp	
OHSUMI, Kazumasa	X-rays	kazumasa.ohsumi@kek.jp	
ONO, Kanta	VUV-SX	kanta.ono@kek.jp	
SAWA, Hiroshi	X-rays	hiroshi.sawa@kek.jp	
SUGIYAMA, Hiroshi	X-rays	hiroshi.sugiyama@kek.jp	
SUZUKI, Mamoru	X-rays		~Mar. 15, 2004
TANAKA, Masahiko	X-rays	masahiko.tanaka.pf@kek.jp	
TOMITA, Norikazu	Theory	tomita@nasuws4.kek.jp	
USAMI, Noriko	X-rays	noriko.usami@kek.jp	
WAKABAYASHI, Yusuke	X-rays	yusuke.wakabayashi@kek.jp	
WAKATSUKI, Soichi	X-rays	soichi.wakatsuki@kek.jp	
YAGISHITA, Akira	VUV-SX	akira.yagishita@kek.jp	
YAMAMOTO, Shigeru	X-rays	shigeru.yamamoto@kek.jp	
ZHANG, Xiaowei	X-rays	zhang.xiaowei@kek.jp	
Light Source Division			
HAGA, Kaiichi	MONITOR	kaiichi.haga@kek.jp	
HARADA, Kentaro	MAG	kentaro.harada@kek.jp	
HONDA, Tohru	MONITOR	tohru.honda@kek.jp	
HORI, Yoichiro	VAC	yoichiro.hori@kek.jp	
ISAWA, Masaaki	RF	isawa@post.kek.jp	
KASUGA, Toshio	MAG	kasugat@post.kek.jp	
KATSURA, Tomotaro	MONITOR		~Mar. 31, 2004
KOBAYASHI, Masanori	VAC	masanori.kobayashi@kek.jp	
KOBAYASHI, Yukinori	MAG	yukinori.kobayashi@kek.jp	

MIYAUCHI, Hiroshi	CHNL	hiroshi.miyauchi@kek.jp
OBINA, Takashi	CONTROL	takashi.obina@kek.jp
PAK, Cheol On	CONTROL	cheol-on.pak@kek.jp
SAKANAKA, Shogo	RF	shogo.sakanaka@kek.jp
TANIMOTO, Yasunori	VAC	yasunori.tanimoto@kek.jp
TSUCHIYA, Kimichika	ID	kimichika.tsuchiya@kek.jp
UMEMORI, Kensei	RF	kensei.umemori@kek.jp

Technical Staff

Experimental Facilities Division I & II

KIKUCHI, Takashi	TECH	takashi.kikuchi@kek.jp
KOSUGE, Takashi	TECH	takashi.kosuge@kek.jp
KOYAMA, Atsushi	TECH	atsushi.koyama@kek.jp
MIKUNI, Akira	TECH	akira.mikuni@kek.jp
MORI, Takeharu	TECH	takeharu.mori@kek.jp
OKAMOTO, Wataru	TECH	wataru.okamoto@kek.jp
SAITO, Yuuki	TECH	yuuki.saito@kek.jp
SATOH, Masato	TECH	masato.satoh@kek.jp
TOYOSHIMA, Akio	TECH	akio.toyoshima@kek.jp
UCHIDA, Yoshinori	TECH	yoshinori.uchida@kek.jp

Light Source Division

ASAOKA, Seiji	CHNL	seiji.asaoka@kek.jp
MISHINA, Atsushi	CONTROL	Atsushi.MISHINA@kek.jp
MIYAJIMA, Tsukasa	CHNL	tsukasa.miyajima@kek.jp
NAGAHASHI, Shinya	MAG	shinya.nagahashi@kek.jp
NOGAMI, Takashi	I&W	takashi.nogami@kek.jp
SATO, Yoshihiro	CONTROL	yoshihiro.sato@kek.jp
SHIOYA, Tatsuro	ID	tatsuro.shioya@kek.jp
TADANO, Mikito	MONITOR	mikito.tadano@kek.jp
TAKAHASHI, Takeshi	RF	takeshi.takahashi@kek.jp
UCHIYAMA, Takashi	VAC	takashi.uchiyama@kek.jp
UEDA, Akira	I&W	akira.ueda@kek.jp

Guest Professor

KAKIZAKI, Akito	(The Univ. of Tokyo)
KATO, Masahiro	(IMS)
KITAMURA, Hideo	(RIKEN/SPRing8)
KOSHIHARA, Shiny	(Tokyo Inst. Tech.)
MOMOSE, Atsushi	(The Univ. of Tokyo)
MURAKAMI, Youich	(Tohoku Univ.)
TANAKA, Isao	(Hokkaido Univ.)

COE Staff

HARRIES, James	harries@nabiki.kek.jp	
HIKOSAKA, Yasumasa		~JUL. 31, 2003
MAMIYA, Kazutoshi	kazutoshi.mamiya@kek.jp	Sep. 1, 2003~
NAKAGAWA, Takeshi		~Mar. 31, 2004
NOZAWA, Shunsuke		~Jan. 31 2004
SAGAYAMA, Hajime	sagayama@post.kek.jp	July 1, 2003~
TODA, Mitsuru		~Nov. 15, 2003
YAMAZAKI, Masahiro		~Mar. 31, 2004

The Graduate University for Advanced Studies

CHAVAS, Leonard		
HASHIMOTO, Eiko		Apr. 1, 2003~
INOUE, Michio		
KAI, Ji		~Mar. 31, 2004

MAEDA, Munetoshi	Apr. 1, 2003~
MAKSIMENKO, Anton	
MIZUSAWA, Atsushi	
MORIMOTO, Osamu	
OBARA, Satoshi	
QIU, Yu	Oct. 1, 2003~
SHIMAO, Daisuke	Apr. 1, 2003~
TANAKA, Momoko	Apr. 1, 2003~
TOKI, Makoto	
UCHIYAMA, Hidefumi	
YAMADA, Yusuke	