

1. Site and Organization



Figure 1
Aerial view of the KEK campus.



1. PF Light Source Building
Experimental Hall
2. PF Office Building
3. PF Preparation Laboratory
4. PF-AR (PF Advanced Ring)
5. PF-AR Experimental Hall
6. PF Structural Biology Building
7. PF/KEKB (KEK B-Factory) Injector Linac
8. Slow Positron Facility
9. Neutron Science Laboratory
10. Muon Science Laboratory
11. PS (Proton Synchrotron) Main Ring
12. PS East Experimental Hall
13. PS North Experimental Hall
14. PS Booster
15. PS Injector Linac
16. Neutrino Beamline
17. Building No.4 (IMSS Office)
18. Library/Public Relations Office
19. Dormitory/Guest House
20. Restaurant/Cafeteria
21. Administration Building
22. Radiation Science Center
23. Computing Research Center
24. Cryogenics Science Center
25. Mechanical Engineering Center
26. KEKB LER (Low Energy Ring) and
HER (High Energy Ring)
27. KEKB Tsukuba Laboratory (BELLE Detector)
28. KEKB Oho Laboratory
29. KEKB Fuji Laboratory
30. KEKB Nikko Laboratory
31. ATF (Accelerator Test Facility)
32. KEK International Center/Users Office
33. Information Center

KEK consists of four research institutions, i.e., the Institute of Materials Structure Science (IMSS), the Institute of Particle and Nuclear Studies, the Accelerator Laboratory and the Applied Research Laboratory. The PF is a part of the IMSS together with the Neutron Science Laboratory and the Muon Science Laboratory, as shown in Fig. 2. The members of the Advisory Committee for

Institute of Materials Structure Science are listed in Table 1. The organization chart of the PF is shown in Fig. 3. The PF consists of three divisions, i.e. the Experimental Facility Divisions I and II, and the Light Source Division. The PF staff members are listed in Table 2.

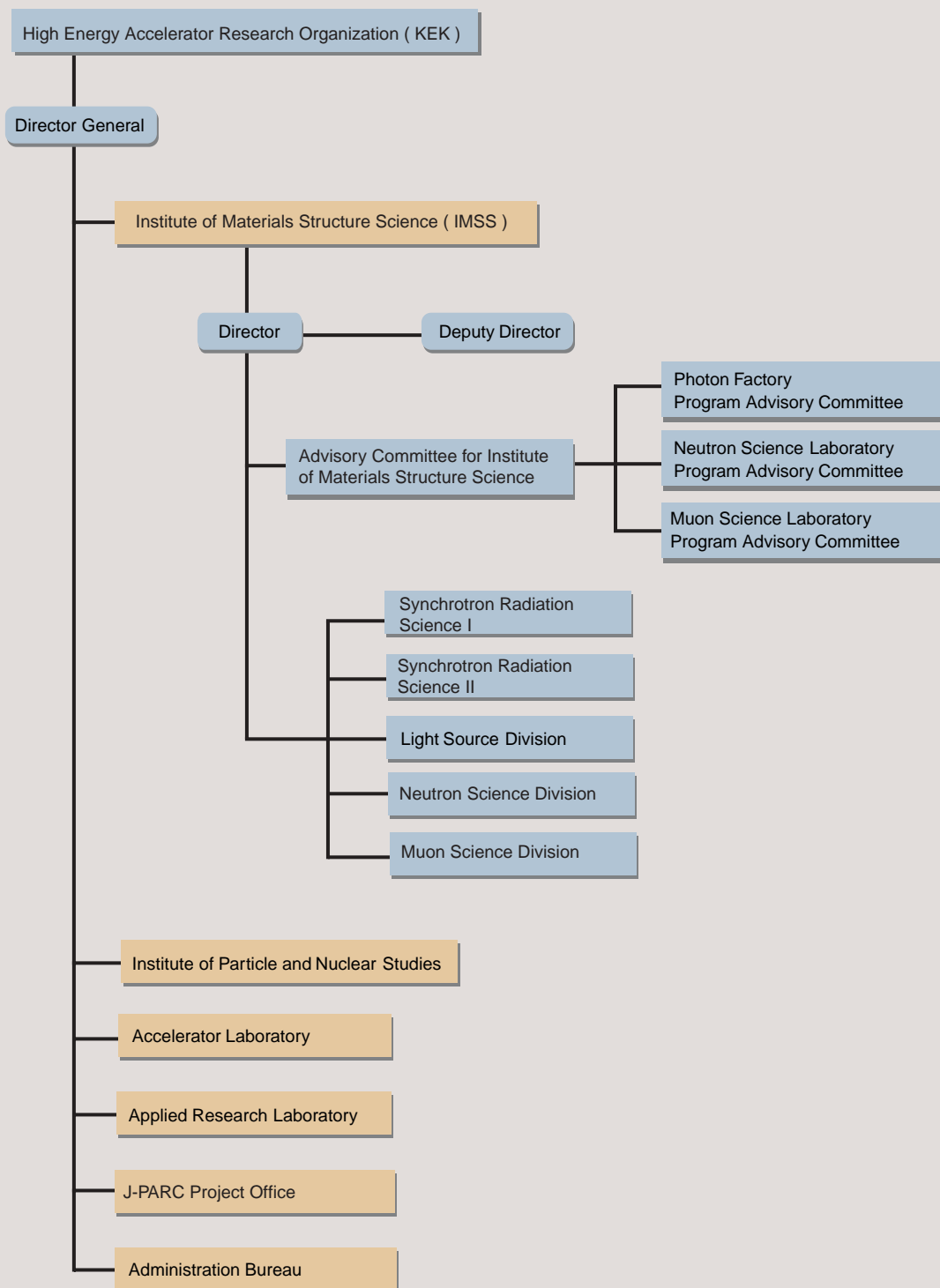


Figure 2
Organization chart of KEK.

Table 1 Advisory Committee for Institute of Materials Structure Science.

AKIMITSU, Jun	Aoyama Gakuin University
FUJII, Yasuhiko	Japan Atomic Energy Research Institute
FURUSAKA, Michihiro	Neutron Science Division, IMSS
HIRAYAMA, Hideo	Applied Research Lab.
IKEDA, Susumu	Neutron Science Division, IMSS
IMAZATO, Jun	Physics Division III, IPNS
ITO, Kenji	Photon Factory, IMSS
KADONO, Ryosuke	Meson Science Division, IMSS
KAKIZAKI, Akito	The University of Tokyo, ISSP
KANAYA, Toshiji	Kyoto University, ICR
KASUGA, Toshio	Photon Factory, IMSS
KAWATA, Hiroshi	Photon Factory, IMSS
KUROKAWA, Shinichi	Accelerator Lab., KEK
MAEZAWA, Hideki	Photon Factory, IMSS
MATSUSHITA, Tadashi*	Photon Factory, IMSS
NISHIDA, Nobuhiko**	Tokyo Institute & Technology
NISHIYAMA, Kusuo	Meson Science Division, IMSS
NOMURA, Masaharu	Photon Factory, IMSS
SAKATA, Makoto	Nagoya University
SATO, Kotaro	Accelerator Lab., KEK
SHIMOMURA, Osamu	Japan Atomic Energy Research Institute
SUGA, Shigemasa	Osaka University
TAKEDA, Yoshikazu	Nagoya University
TSUKIHARA, Tomitake	Osaka University

* Chairman ** Vice-Chairman

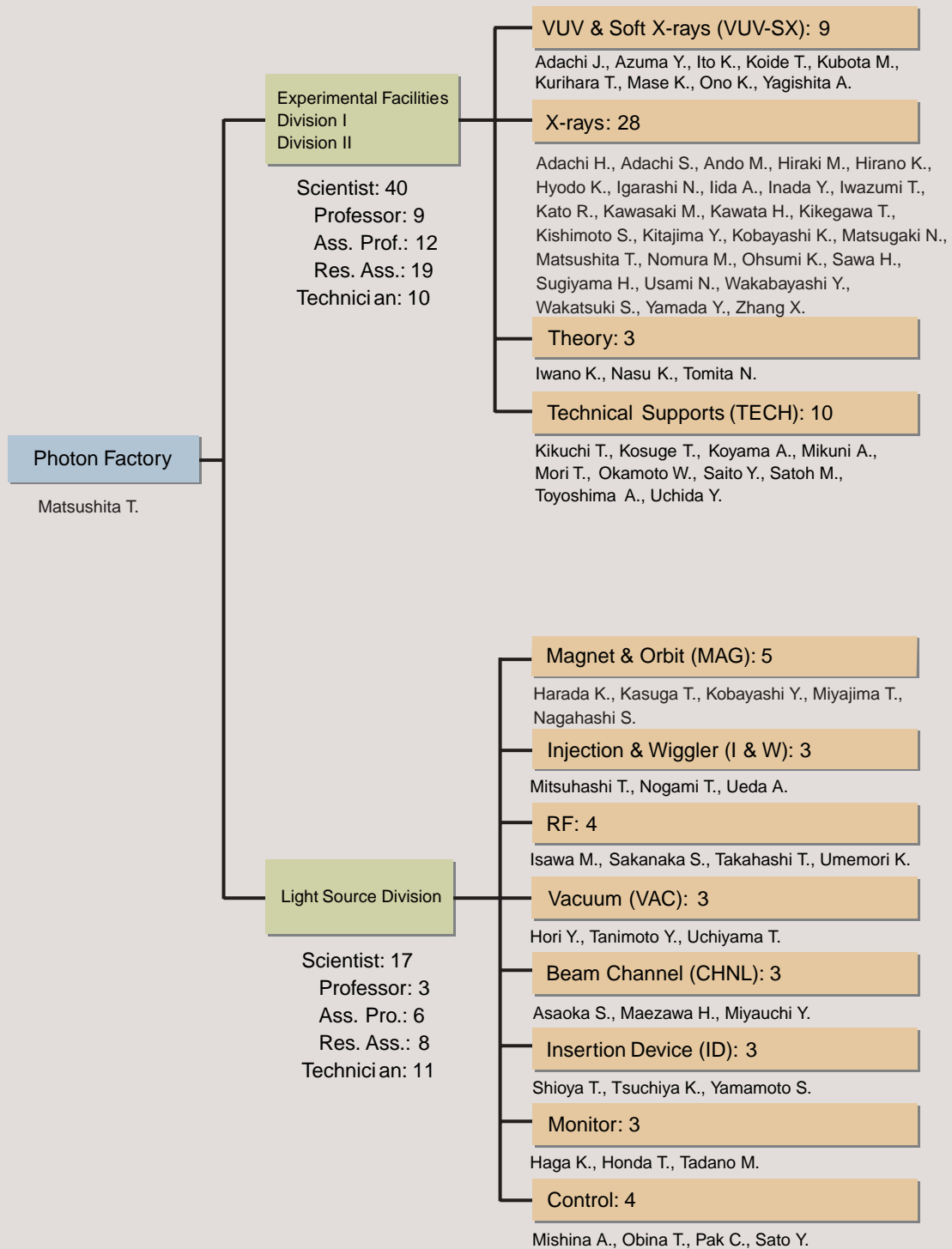


Figure 3
Organization chart of PF (as of March 31, 2005) .

Table 2 Staff members of the Photon Factory

Research Staff			
Director			
MATSUSHITA, Tadashi	Director	tadashi.matsushita@kek.jp	
Experimental Facilities Division I & II			
ADACHI, Hiromichi	X-rays	hiromichi.adachi@kek.jp	
ADACHI, Jun-ichi	VUV-SX	jun-ichi.adachi@kek.jp	
ADACHI, Shinichi	X-rays	shinichi.adachi@kek.jp	
ANDO, Masami	X-rays	masami.ando@kek.jp	
AZUMA, Yoshiro	VUV-SX	yoshiro.azuma@kek.jp	
HIRAKI, Masahiko	X-rays	masahiko.hiraki@kek.jp	
HIRANO, Keiichi	X-rays	keiichi.hirano@kek.jp	
HYODO, Kazuyuki	X-rays	kazuyuki.hyodo@kek.jp	
IGARASHI, Noriyuki	X-rays	noriyuki.igarashi@kek.jp	
IIDA, Atsuo	X-rays	atsuo.iida@kek.jp	
INADA, Yasuhiro	X-rays	yasuhiro.inada@kek.jp	Nov. 16, 2004~
ITO, Kenji	VUV-SX	kenji.ito@kek.jp	
IWANO, Kaoru	Theory	kaoru.iwano@kek.jp	
IWAZUMI, Toshiaki	X-rays	toshiaki.iwazumi@kek.jp	
KATO, Ryuichi	X-rays	ryuichi.kato@kek.jp	
KAWASAKI, Masato	X-rays	kawasaki@pfweis.kek.jp	
KAWATA, Hiroshi	X-rays	hiroshi.kawata@kek.jp	
KIKEGAWA, Takumi	X-rays	takumi.kikegawa@kek.jp	
KISHIMOTO, Shunji	X-rays	syunji.kishimoto@kek.jp	
KITAJIMA, Yoshinori	X-rays	yoshinori.kitajima@kek.jp	
KOBAYASHI, Katsumi	X-rays	katsumi.kobayashi@kek.jp	
KOIDE, Tsuneharu	VUV-SX	tsuneharu.koide@kek.jp	
KUBOTA, Masato	VUV-SX	masato.kubota@kek.jp	
KURIHARA, Toshikazu	SPF	toshikazu.kurihara@kek.jp	
MASE, Kazuhiko	VUV-SX	kazuhiko.mase@kek.jp	
MATSUGAKI, Naohiro	X-rays	naohiro.matsugaki@kek.jp	
NASU, Keiichiro	Theory	keiichiro.nasu@kek.jp	
NOMURA, Masaharu	X-rays	masaharu.nomura@kek.jp	
OHSUMI, Kazumasa	X-rays	kazumasa.ohsumi@kek.jp	
ONO, Kanta	VUV-SX	kanta.ono@kek.jp	
SAWA, Hiroshi	X-rays	hiroshi.sawa@kek.jp	
SUGIYAMA, Hiroshi	X-rays	hiroshi.sugiyama@kek.jp	
TANAKA, Masahiko	X-rays		~Nov. 30, 2004
TOMITA, Norikazu	Theory	tomita@nasuws4.kek.jp	
USAMI, Noriko	X-rays	noriko.usami@kek.jp	
WAKABAYASHI, Yusuke	X-rays	yusuke.wakabayashi@kek.jp	
WAKATSUKI, Soichi	X-rays	soichi.wakatsuki@kek.jp	
YAGISHITA, Akira	VUV-SX	akira.yagishita@kek.jp	
YAMADA, Yusuke	X-rays	yama@post.kek.jp	Aug. 1, 2004~
YAMAMOTO, Shigeru	X-rays		~Jul. 15, 2004
ZHANG, Xiaowei	X-rays	zhang.xiaowei@kek.jp	
Light Source Divison			
HAGA, Kaiichi	MONITOR	kaiichi.haga@kek.jp	
HARADA, Kentaro	MAG	kentaro.harada@kek.jp	
HONDA, Tohru	MONITOR	tohru.honda@kek.jp	
HORI, Yoichiro	VAC	yoichiro.hori@kek.jp	

ISAWA, Masaaki	RF	isawa@post.kek.jp
KASUGA, Toshio	MAG	kasugat@post.kek.jp
KOBAYASHI, Yukinori	MAG	yukinori.kobayashi@kek.jp
MAEZAWA, Hideki	CHNL	hideki.maezawa@kek.jp
MITSUHASHI, Toshiyuki	I&W	toshiyuki.mitsubishi@kek.jp
MIYAUCHI, Hiroshi	CHNL	hiroshi.miyouchi@kek.jp
OBINA, Takashi	CONTROL	takashi.obina@kek.jp
PAK, Cheol On	CONTROL	cheol-on.pak@kek.jp
SAKANAKA, Shogo	RF	shogo.sakanaka@kek.jp
TANIMOTO, Yasunori	VAC	yasunori.tanimoto@kek.jp
TSUCHIYA, Kimichika	ID	kimichika.tsuchiya@kek.jp
UMEMORI, Kensei	RF	kensei.umemori@kek.jp
YAMAMOTO, Shigeru	ID	shigeru.yamamoto@kek.jp

Jul. 16, 2004~

Technical Staff

Experimental Facilities Division I & II

KIKUCHI, Takashi	TECH	takashi.kikuchi@kek.jp
KOSUGE, Takashi	TECH	takashi.kosuge@kek.jp
KOYAMA, Atsushi	TECH	atsushi.koyama@kek.jp
MORI, Takeharu	TECH	takeharu.mori@kek.jp
OKAMOTO, Wataru	TECH	wataru.okamoto@kek.jp
SAITO, Yuuki	TECH	yuuki.saito@kek.jp
SATOH, Masato	TECH	masato.satoh@kek.jp
TOYOSHIMA, Akio	TECH	akio.toyoshima@kek.jp
UCHIDA, Yoshinori	TECH	yoshinori.uchida@kek.jp

Light Source Division

ASAOKA, Seiji	CHNL	seiji.asaoka@kek.jp
MISHINA, Atsushi	CONTROL	Atsushi.MISHINA@kek.jp
MIYAJIMA, Tsukasa	CHNL	tsukasa.miyajima@kek.jp
NAGAHASHI, Shinya	MAG	shinya.nagahashi@kek.jp
NOGAMI, Takashi	I&W	takashi.nogami@kek.jp
SATO, Yoshihiro	CONTROL	yoshihiro.sato@kek.jp
SHIOYA, Tatsuro	ID	tatsuro.shioya@kek.jp
TADANO, Mikito	MONITOR	mikito.tadano@kek.jp
TAKAHASHI, Takeshi	RF	takeshi.takahashi@kek.jp
UCHIYAMA, Takashi	VAC	takashi.uchiyama@kek.jp
UEDA, Akira	I&W	akira.ueda@kek.jp

Guest Professor

ASAKURA, Kiyotaka	(Hokkaido Univ.)
ARIMA, Takahisa	(Tohoku Univ.)
KOSHIHARA, Shinya	(Tokyo Inst. Tech.)
FUJIMORI, Atsushi	(The Univ. of Tokyo)
WATANABE, Nobuhisa	(Hokkaido Univ.)
HANAOKI, Hirofumi	(JASRI/SPring-8)
KATO, Masahiro	(IMS)

COE Staff

AOTO, Tomohiro	tomohiro.aoto@kek.jp
CHENG, Weixing	chengwx@post.kek.jp
HARRIES, James	
MAMIYA, Kazutoshi	kazutoshi.mamiya@kek.jp

Oct. 5, 2004~
~Mar. 31, 2005

NANBU, Akira		~Mar. 31, 2005
SAGAYAMA, Hajime	sagayama@post.kek.jp	
YAMAZAKI, Masahiko		~Apr. 15, 2004

The Graduate University for Advanced Studies

AKUTSU, Masato		
CHAVAS, Leonard		
HASHIMOTO, Eiko		
INOUE, Michio		~Mar. 31, 2005
JU, Jifeng		~Oct. 1, 2004
KAKIUCH, Toru		
MAEDA, Munetoshi		
MAKSIMENKO, Anton		
MORIMOTO, Osamu		
OBARA, Satoshi		
QIU, Yu		
SHIMAO, Daisuke		
TANAKA, Momoko		
TOKI, Makoto		
UCHIYAMA, Hidefumi		~Mar. 31, 2005