

1. Site and Organization





1. PF Light Source Building
Experimental Hall
2. PF Office Building
3. PF Preparation Laboratory
4. PF-AR (PF Advanced Ring)
5. PF-AR Experimental Hall
6. PF Structural Biology Building
7. PF/KEKB (KEK B-Factory) Injector Linac
8. Slow Positron Facility
9. Neutron Science Laboratory
10. Muon Science Laboratory
11. PS (Proton Synchrotron) Main Ring
12. PS East Experimental Hall
13. PS North Experimental Hall
14. PS Booster
15. PS Injector Linac
16. Neutrino Beamline
17. Building No.4 (IMSS Office)
18. Library/Public Relations Office
19. Dormitory/Guest House
20. Restaurant/Cafeteria
21. Administration Building
22. Radiation Science Center
23. Computing Research Center
24. Cryogenics Science Center
25. Mechanical Engineering Center
26. KEKB LER (Low Energy Ring) and
HER (High Energy Ring)
27. KEKB Tsukuba Laboratory (BELLE Detector)
28. KEKB Oho Laboratory
29. KEKB Fuji Laboratory
30. KEKB Nikko Laboratory
31. ATF (Accelerator Test Facility)
32. KEK International Center/Users Office
33. Information Center

KEK consists of four research institutions, i.e., the Institute of Materials Structure Science (IMSS), the Institute of Particle and Nuclear Studies, the Accelerator Laboratory, and the Applied Research Laboratory. As shown in Fig.1, the Photon Factory (PF), the Neutron Science Laboratory, and the Muon Science Laboratory together constitute the IMSS, with the PF being a principal constituent of the IMSS. Table 1 shows a list of the members of the Advisory Committee for Institute of Materials Structure Science. The Committee is placed directly above the three committees, i.e., the Photon Factory Program Advisory Committee, the Neutron Science

Laboratory Program Advisory Committee, and the Muon Science Laboratory Program Advisory Committee. The organization chart of the PF is shown in Fig. 2. The PF consists of three divisions, i.e., the Synchrotron Radiation Science Divisions I and II, and the Light Source Division. Science Divisions I and II consist of the VUV and Soft X-ray subdivision, the X-ray one, the Theory one, and the Technical Support one. The Light Source Division comprises several groups of the Magnet and Orbit, the Injection and Wiggler, the RF, the Vacuum, the Beam Channel, the Insertion, the Monitor, and the Control. The PF staff members are listed in Table 2.

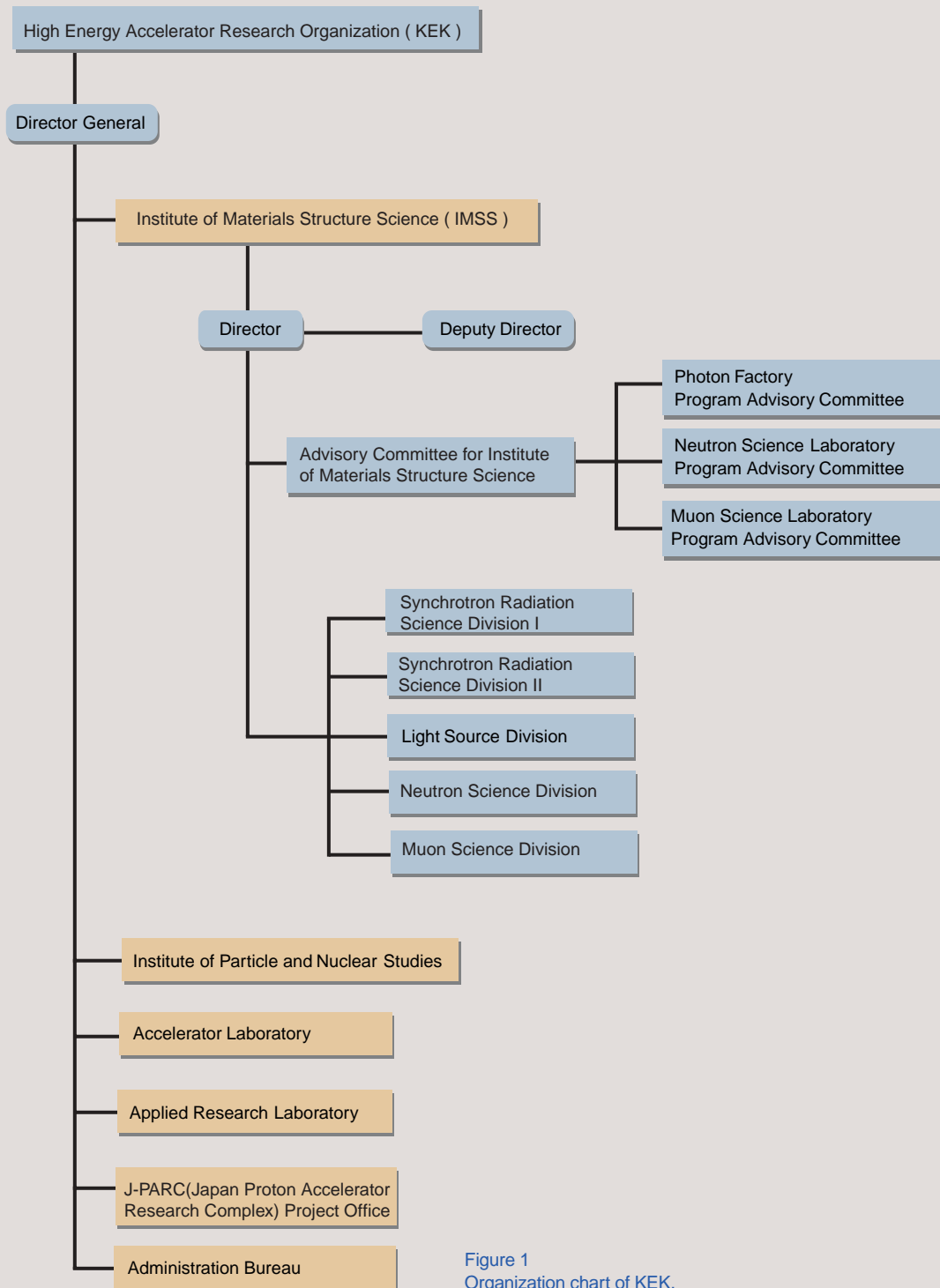


Figure 1
Organization chart of KEK.

Table 1 The members of the Advisory Committee for Institute of Materials Structure Science.

AKIMITSU, Jun	Aoyama Gakuin University
FUJII, Yasuhiko	Japan Atomic Energy Research Institute
FURUSAKA, Michihiro	Neutron Science Division, IMSS
HIRAYAMA, Hideo	Applied Research Laboratory
IKEDA, Susumu	Neutron Science Division, IMSS
IMAZATO, Jun	Physics Division III, IPNS
ITO, Kenji	Photon Factory, IMSS
KADONO, Ryosuke	Muon Science Division, IMSS
KAKIZAKI, Akito	The University of Tokyo, ISSP
KANAYA, Toshiji	Kyoto University, ICR
KASUGA, Toshio	Photon Factory, IMSS
KAWATA, Hiroshi	Photon Factory, IMSS
KUROKAWA, Shinichi	Accelerator Lab., KEK
MAEZAWA, Hideki	Photon Factory, IMSS
MATSUSHITA, Tadashi*	Photon Factory, IMSS
NISHIDA, Nobuhiko**	Tokyo Institute & Technology
NISHIYAMA, Kusuo	Muon Science Division, IMSS
NOMURA, Masaharu	Photon Factory, IMSS
SAKATA, Makoto	Nagoya University
SATO, Kotaro	Accelerator Laboratory, KEK
SHIMOMURA, Osamu	Japan Atomic Energy Research Institute
SUGA, Shigemasa	Osaka University
TAKEDA, Yoshikazu	Nagoya University
TSUKIHARA, Tomitake	Osaka University

* Chairman ** Vice-Chairman

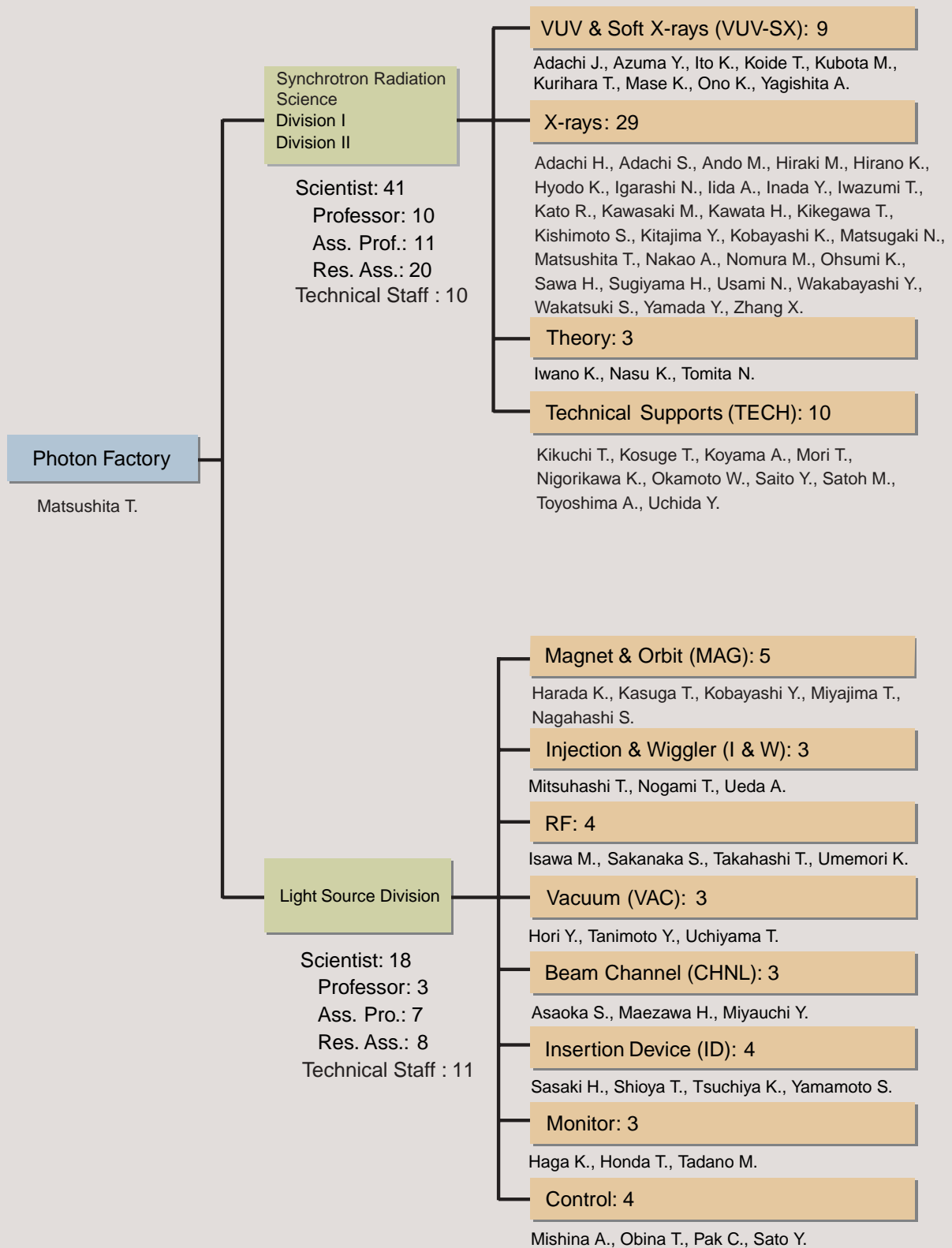


Figure 2
Organization chart of PF (as of March 31, 2006) .

Table 2 Staff members of the Photon Factory

Research Staff				
Director				
MATSUSHITA, Tadashi*	Director	tadashi.matsushita@kek.jp		~Mar. 31, 2006
Synchrotron Radiation Science Division I & II				
ADACHI, Hiromichi	X-rays	hiromichi.adachi@kek.jp		
ADACHI, Jun-ichi	VUV-SX	jun-ichi.adachi@kek.jp		
ADACHI, Shinichi	X-rays	shinichi.adachi@kek.jp		
ANDO, Masami	X-rays			~Mar. 31, 2006
AZUMA, Yoshiro	VUV-SX	yoshiro.azuma@kek.jp		
HIRAKI, Masahiko	X-rays	masahiko.hiraki@kek.jp		
HIRANO, Keiichi	X-rays	keiichi.hirano@kek.jp		
HYODO, Kazuyuki	X-rays	kazuyuki.hyodo@kek.jp		
IGARASHI, Noriyuki	X-rays	noriyuki.igarashi@kek.jp		
IIDA, Atsuo	X-rays	atsuo.iida@kek.jp		
INADA, Yasuhiro	X-rays	yasuhiro.inada@kek.jp		
ITO, Kenji	VUV-SX	kenji.ito@kek.jp		
IWANO, Kaoru	Theory	kaoru.iwano@kek.jp		
IWAZUMI, Toshiaki	X-rays	toshiaki.iwazumi@kek.jp		
KATO, Ryuichi	X-rays	ryuichi.kato@kek.jp		
KAWASAKI, Masato	X-rays	kawasaki@pfweis.kek.jp		
KAWATA, Hiroshi	X-rays	hiroshi.kawata@kek.jp		
KIKEGAWA, Takumi	X-rays	takumi.kikegawa@kek.jp		
KISHIMOTO, Shunji	X-rays	shunji.kishimoto@kek.jp		
KITAJIMA, Yoshinori	X-rays	yoshinori.kitajima@kek.jp		
KOBAYASHI, Katsumi	X-rays	katsumi.kobayashi@kek.jp		
KOIDE, Tsuneharu	VUV-SX	tsuneharu.koide@kek.jp		
KUBOTA, Masato	VUV-SX	masato.kubota@kek.jp		
KURIHARA, Toshikazu	SPF	toshikazu.kurihara@kek.jp		
MASE, Kazuhiko	VUV-SX	kazuhiko.mase@kek.jp		
MATSUGAKI, Naohiro	X-rays	naohiro.matsugaki@kek.jp		
NAKAO, Akiko	X-rays	akiko.nakao@kek.jp		Nov. 16, 2005~
NASU, Keiichiro	Theory	keiichiro.nasu@kek.jp		
NOMURA, Masaharu	X-rays	masaharu.nomura@kek.jp		
OHSUMI, Kazumasa	X-rays			~Mar. 31, 2006
ONO, Kanta	VUV-SX	kanta.ono@kek.jp		
SAWA, Hiroshi	X-rays	hiroshi.sawa@kek.jp		
SUGIYAMA, Hiroshi	X-rays	hiroshi.sugiyama@kek.jp		
TOMITA, Norikazu	Theory			~Mar. 31, 2006
USAMI, Noriko	X-rays	noriko.usami@kek.jp		
WAKABAYASHI, Yusuke	X-rays	yusuke.wakabayashi@kek.jp		
WAKATSUKI, Soichi	X-rays	soichi.wakatsuki@kek.jp		
YAGISHITA, Akira	VUV-SX	akira.yagishita@kek.jp		
YAMADA, Yusuke	X-rays	yama@post.kek.jp		
ZHANG, Xiaowei	X-rays	zhang.xiaowei@kek.jp		
Light Source Division				
HAGA, Kaiichi	MONITOR	kaiichi.haga@kek.jp		
HARADA, Kentaro	MAG	kentaro.harada@kek.jp		
HONDA, Tohru	MONITOR	tohru.honda@kek.jp		
HORI, Yoichiro	VAC	yoichiro.hori@kek.jp		~Feb. 15, 2006
ISAWA, Masaaki	RF	isawa@post.kek.jp		
KASUGA, Toshio	MAG	kasugat@post.kek.jp		
KOBAYASHI, Yukinori	MAG	yukinori.kobayashi@kek.jp		
MAEZAWA, Hideki	CHNL	hideki.maezawa@kek.jp		
MITSUHASHI, Toshiyuki	I&W	toshiyuki.mitsuhashi@kek.jp		

MIYAUCHI, Hiroshi	CHNL	hiroshi.miyauchi@kek.jp	
OBINA, Takashi	CONTROL	takashi.obina@kek.jp	
PAK, Cheol On	CONTROL	cheol-on.pak@kek.jp	
SAKANAKA, Shogo	RF	shogo.sakanaka@kek.jp	
SASAKI, Hiroyuki	ID	hiroyuki.sasaki@kek.jp	Jan. 1, 2006~
TANIMOTO, Yasunori	VAC	yasunori.tanimoto@kek.jp	
TSUCHIYA, Kimichika	ID	kimichika.tsuchiya@kek.jp	
UMEMORI, Kensei	RF	kensei.umemori@kek.jp	
YAMAMOTO, Shigeru	ID	shigeru.yamamoto@kek.jp	

Technical Staff

Synchrotron Radiation Science Division I & II

KIKUCHI, Takashi	TECH	takashi.kikuchi@kek.jp	
KOSUGE, Takashi	TECH	takashi.kosuge@kek.jp	
KOYAMA, Atsushi	TECH	atsushi.koyama@kek.jp	
MORI, Takeharu	TECH	takeharu.mori@kek.jp	
NIGORIKAWA, Kazuyuki	TECH	kazuyuki.nigorikawa@kek.jp	Apr. 1, 2005~
OKAMOTO, Wataru	TECH	wataru.okamoto@kek.jp	
SAITO, Yuuki	TECH	yuuki.saito@kek.jp	
SATOH, Masato	TECH	masato.satoh@kek.jp	
TOYOSHIMA, Akio	TECH	akio.toyoshima@kek.jp	
UCHIDA, Yoshinori	TECH	yoshinori.uchida@kek.jp	

Light Source Division

ASAOKA, Seiji	CHNL	seiji.asaoka@kek.jp	
MISHINA, Atsushi	CONTROL	Atsushi.MISHINA@kek.jp	
MIYAJIMA, Tsukasa	MAG	tsukasa.miyajima@kek.jp	
NAGAHASHI, Shinya	MAG	shinya.nagahashi@kek.jp	
NOGAMI, Takashi	I&W	takashi.nogami@kek.jp	
SATO, Yoshihiro	CONTROL	yoshihiro.sato@kek.jp	
SHIOYA, Tatsuro	ID	tatsuro.shioya@kek.jp	
TADANO, Mikito	MONITOR	mikito.tadano@kek.jp	
TAKAHASHI, Takeshi	RF	takeshi.takahashi@kek.jp	
UCHIYAMA, Takashi	VAC	takashi.uchiyama@kek.jp	
UEDA, Akira	I&W	akira.ueda@kek.jp	

Guest Professor

ARIMA, Takahisa	(Tohoku Univ.)
ASAKURA, Kiyotaka	(Hokkaido Univ.)
FUJIMORI, Atsushi	(The Univ. of Tokyo)
HANAOKI, Hirofumi	(JASRI/SPring-8)
KATO, Masahiro	(IMS)
KOSHIHARA, Shinya	(Tokyo Inst. Tech.)
WAKABAYASHI, Katsuzo	(Osaka Univ.)
WATANABE, Nobuhisa	(Hokkaido Univ.)

Postdoctoral Fellow

AOTO, Tomohiro		~Mar. 31, 2006
CHENG, Weixing	chengwx@post.kek.jp	
ISHIJI, Kotaro		Apr. 1, 2005~
JI, Kai	jikai@post.kek.jp	Aug. 1, 2005~
MAMIYA, Kazutoshi		~Mar. 31, 2006
SAGAYAMA, Hajime		~Jun. 30, 2005

The Graduate University for Advanced Studies

AKUTSU, Masato		
CHAVAS, Leonard		~Oct. 15, 2005

HASHIMOTO, Eiko	
KAKIUCH, Toru	
KOHYAMA, Junichi	Apr. 7, 2005~
MAEDA, Munetoshi	
MAKSIMENKO, Anton	~Mar. 31, 2006
MORIMOTO, Osamu	~Mar. 31, 2006
OBARA, Satoshi	
QIU, Yu	
RADOSINSKI Lukasz Tadeusz	Oct. 5, 2005~
SHIMAO, Daisuke	~Mar. 31, 2006
SUZUKI, Akio	Apr. 7, 2005~
TANAKA, Momoko	
TOKI, Makoto	
YU, Jifeng	

* Professor S. Wakatsuki is the new Director of PF from April 1, 2006.