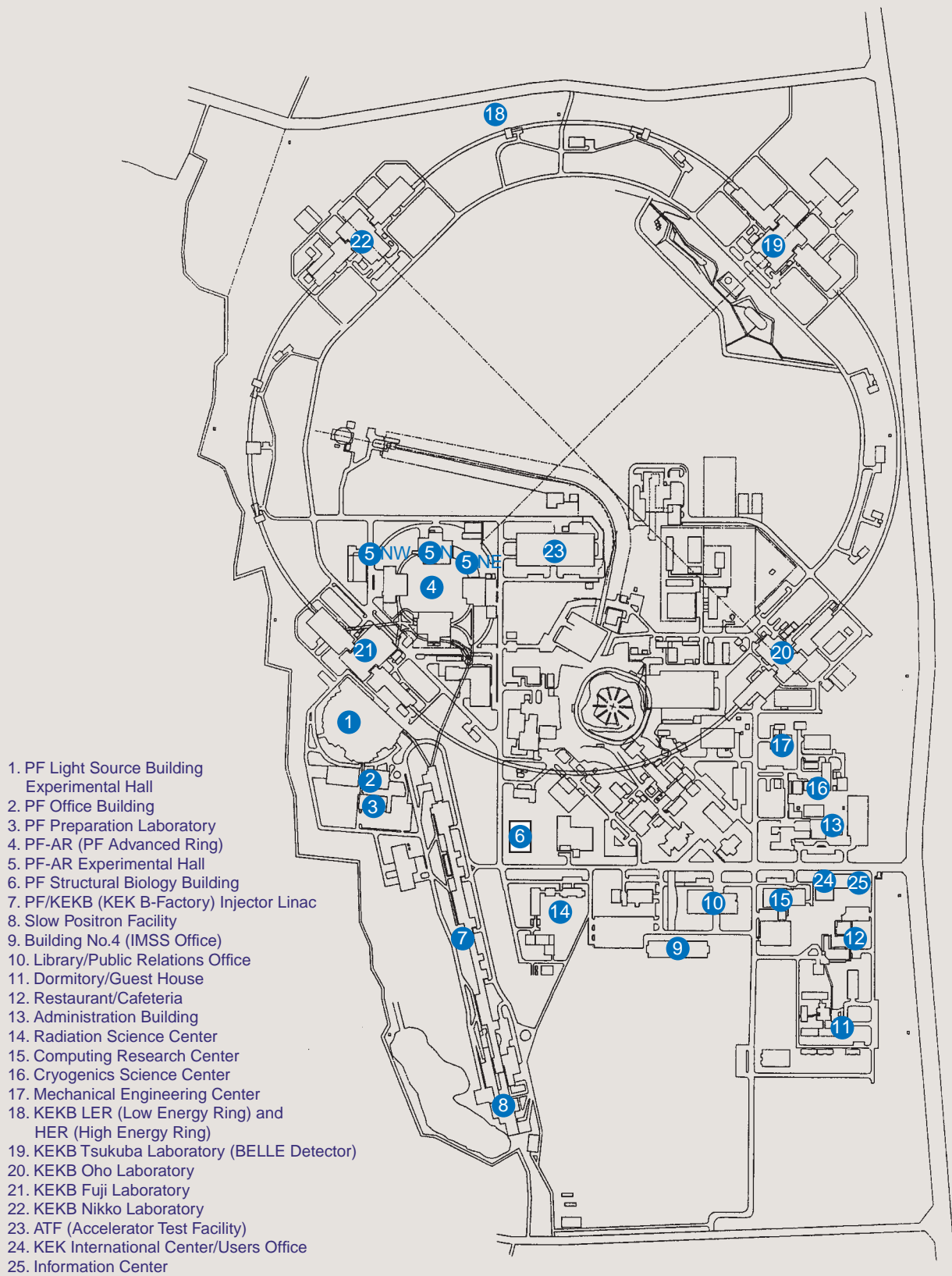


1. Site and Organization





KEK consists of four research institutions, i.e., the Institute of Materials Structure Science (IMSS), the Institute of Particle and Nuclear Studies, the Accelerator Laboratory, and the Applied Research Laboratory. As shown in Fig. 1, the Photon Factory (PF), the Neutron Science Laboratory, and the Muon Science Laboratory together constitute the IMSS, with the PF being a principal constituent of the IMSS. The neutron and muon facilities at the Tsukuba Campus have been shut down in 2005. The neutron and the muon facilities in the Tokai Campus (the Materials and Life Science Facility (MLF) in the Japan Proton Accelerator Research Complex (J-PARC)) are now under construction. Table 1 shows a list of the members of the Advisory Committee for

Institute of Materials Structure Science. The Committee is placed directly above the three committees, i.e., the Photon Factory Program Advisory Committee, the Neutron Science Laboratory Program Advisory Committee, and the Muon Science Laboratory Program Advisory Committee. The organization chart of the PF is shown in Fig. 2. The PF consists of three divisions, i.e., the Synchrotron Radiation Science Divisions I and II, and the Light Source Division. Science Divisions I and II consist of the VUV and Soft X-ray subdivision, the X-ray one, the Theory one, and the Technical Support one. The Light Source Division comprises several groups of the Magnet and Orbit, the Injection and Wiggler, the RF, the Vacuum, the Beam Channel, the Insertion, the Monitor, and the Control. The PF staff members are listed in Table 2.

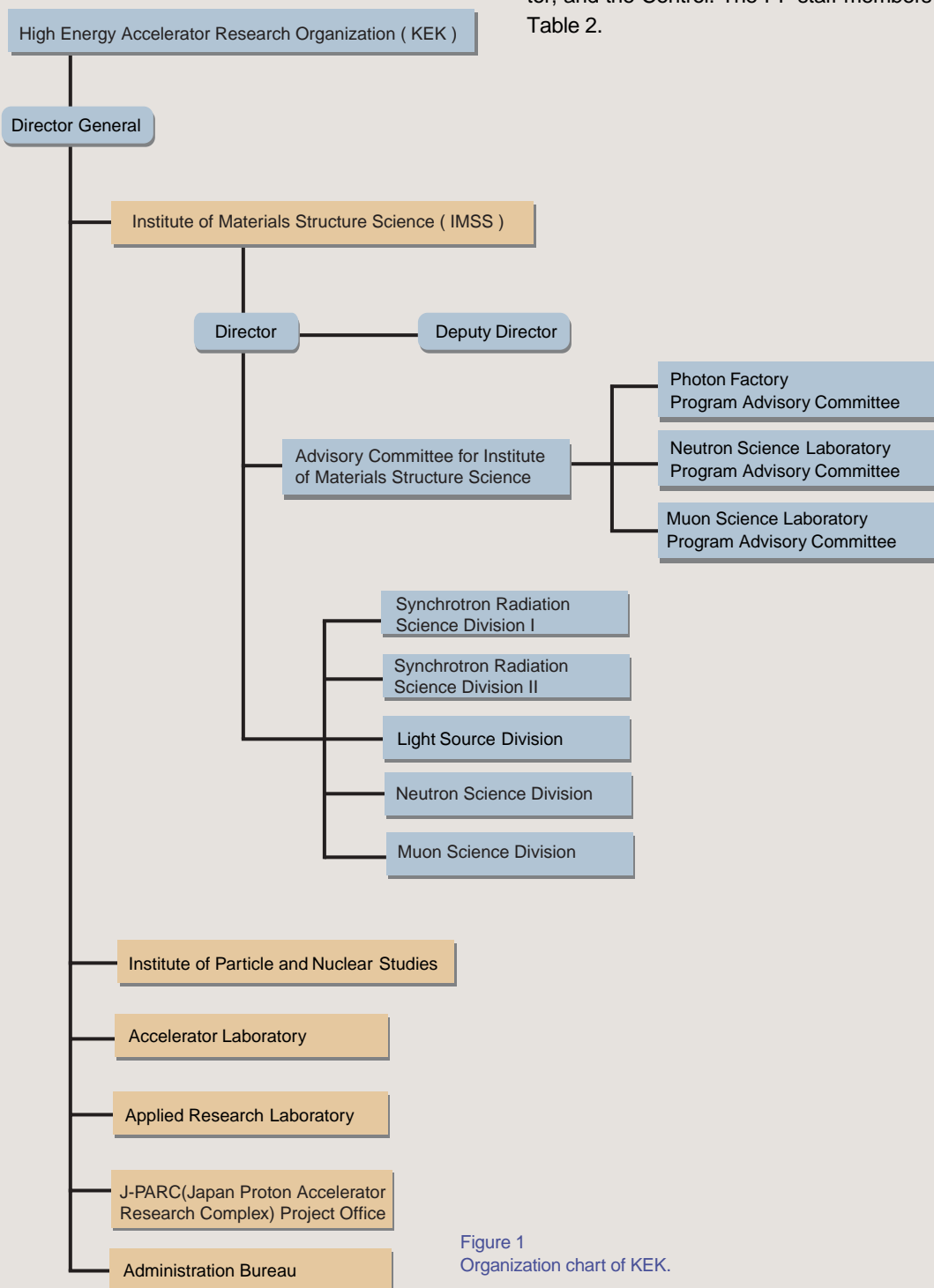


Figure 1
Organization chart of KEK.

Table 1 The members of the Advisory Committee for Institute of Materials Structure Science.

AKIMITSU, Jun	Aoyama Gakuin University
AMEMIYA, Yoshiyuki	The University of Tokyo
ARAI, Masatoshi	Japan Atomic Energy Agency
BAN, Shuichi	Applied Research Laboratory, KEK
IKEDA, Susumu*	Neutron Science Division, Deputy Director, IMSS
KADONO, Ryosuke	Neutron Science Division, IMSS
KAMIYAMA, Takashi	J-PARC Project Office, KEK
KASUGA, Toshio	Photon Factory, IMSS
KAWATA, Hiroshi	Photon Factory, IMSS
KUROKAWA, Shin-ichi	Accelerator Laboratory, KEK
MAEZAWA, Hideki	Photon Factory, IMSS
MURAKAMI, Yoichi	Tohoku University
NISHIDA, Nobuhiko**	Tokyo Institute of Technology
NISHIYAMA, Kusuo	Muon Science Division, IMSS
NOMURA, Masaharu	Photon Factory, IMSS
NOZAKI, Mitsuaki	Institute of Particle and Nuclear Studies, KEK
OSHIMA, Masaharu	The University of Tokyo
SAKATA, Makoto	Nagoya University
SATO, Kotaro	Accelerator Laboratory, KEK
SHIMIZU, Hirohiko	Neutron Science Division, IMSS
TAKATA, Masaki	RIKEN/SPring-8
TSUKIHARA, Tomitake	Osaka University
WAKATSUKI, Soichi	Photon Factory, IMSS
YOSHIZAWA, Hideki	The University of Tokyo, ISSP

* Chairman ** Vice-Chairman

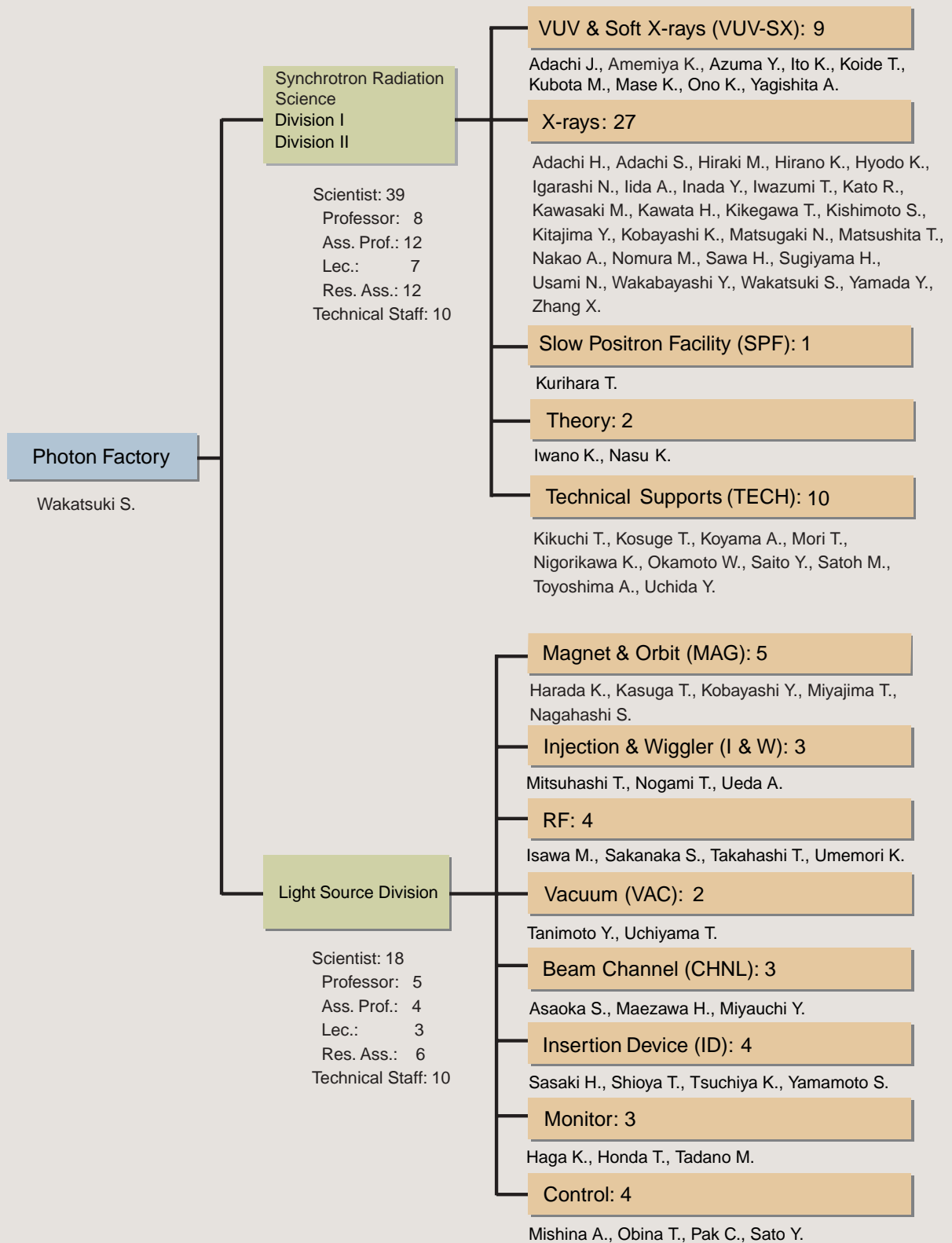


Figure 2
Organization chart of PF (as of March 31, 2007) .

Table 2 Staff members of the Photon Factory

Name	Responsibility	e-mail address
Research Staff		
Director		
WAKATSUKI, Soichi	Director	soichi.wakatsuki@kek.jp
Experimental Facilities Division I & II		
ADACHI, Hiromichi	X-rays	hiromichi.adachi@kek.jp
ADACHI, Jun-ichi	VUV-SX	jun-ichi.adachi@kek.jp
ADACHI, Shinichi	X-rays	shinichi.adachi@kek.jp
AMEMIYA, Kenta	VUV-SX	kenta.amemiya@kek.jp
AZUMA, Yoshiro	VUV-SX	yoshiro.azuma@kek.jp
HIRAKI, Masahiko	X-rays	masahiko.hiraki@kek.jp
HIRANO, Keiichi	X-rays	keiichi.hirano@kek.jp
HYODO, Kazuyuki	X-rays	kazuyuki.hyodo@kek.jp
IGARASHI, Noriyuki	X-rays	noriyuki.igarashi@kek.jp
IIDA, Atsuo	X-rays	atsuo.iida@kek.jp
INADA, Yasuhiro	X-rays	yasuhiro.inada@kek.jp
ITO, Kenji	VUV-SX	kenji.ito@kek.jp
IWANO, Kaoru	Theory	kaoru.iwano@kek.jp
IWAZUMI, Toshiaki	X-rays	toshiaki.iwazumi@kek.jp
KATO, Ryuichi	X-rays	ryuichi.kato@kek.jp
KAWASAKI, Masato	X-rays	kawasaki@pfweis.kek.jp
KAWATA, Hiroshi	X-rays	hiroshi.kawata@kek.jp
KIKEGAWA, Takumi	X-rays	takumi.kikegawa@kek.jp
KIKUCHI, Takashi	TECH	takashi.kikuchi@kek.jp
KISHIMOTO, Shunji	X-rays	shunji.kishimoto@kek.jp
KITAJIMA, Yoshinori	X-rays	yoshinori.kitajima@kek.jp
KOBAYASHI, Katsumi	X-rays	katsumi.kobayashi@kek.jp
KOIDE, Tsuneharu	VUV-SX	tsuneharu.koide@kek.jp
KOSUGE, Takashi	TECH	takashi.kosuge@kek.jp
KOYAMA, Atsushi	TECH	atsushi.koyama@kek.jp
KUBOTA, Masato	VUV-SX	masato.kubota@kek.jp
KURIHARA, Toshikazu	SPF	toshikazu.kurihara@kek.jp
MASE, Kazuhiko	VUV-SX	kazuhiko.mase@kek.jp
MATSUGAKI, Naohiro	X-rays	naohiro.matsugaki@kek.jp
MATSUSHITA, Tadashi	X-rays	tadashi.matsushita@kek.jp
MORI, Takeharu	TECH	takeharu.mori@kek.jp
NAKAO, Akiko	X-rays	akiko.nakao@kek.jp
NASU, Keiichiro	Theory	keiichiro.nasu@kek.jp
NIGORIKAWA, Kazuyuki	TECH	kazuyuki.nigorikawa@kek.jp
NOMURA, Masaharu	X-rays	masaharu.nomura@kek.jp
OKAMOTO, Wataru	TECH	wataru.okamoto@kek.jp
ONO, Kanta	VUV-SX	kanta.ono@kek.jp
SAITO, Yuuki	TECH	yuuki.saito@kek.jp
SATOH, Masato	TECH	masato.satoh@kek.jp
SAWA, Hiroshi	X-rays	hiroshi.sawa@kek.jp
SUGIYAMA, Hiroshi	X-rays	hiroshi.sugiyama@kek.jp
TOYOSHIMA, Akio	TECH	akio.toyoshima@kek.jp
UCHIDA, Yoshinori	TECH	yoshinori.uchida@kek.jp
USAMI, Noriko	X-rays	noriko.usami@kek.jp
WAKABAYASHI, Yusuke	X-rays	yusuke.wakabayashi@kek.jp
YAGISHITA, Akira	VUV-SX	akira.yagishita@kek.jp
YAMADA, Yusuke	X-rays	yama@post.kek.jp
ZHANG, Xiaowei	X-rays	zhang.xiaowei@kek.jp

Jun. 1, 2006~

Name	Responsibility	e-mail address
Light Source Divison		
ASAOKA, Seiji	CHNL	seiji.asaoka@kek.jp
HAGA, Kaiichi	MONITOR	kaiichi.haga@kek.jp
HARADA, Kentaro	MAG	kentaro.harada@kek.jp
HONDA, Tohru	MONITOR	tohru.honda@kek.jp
ISAWA, Masaaki	RF	isawa@post.kek.jp
KASUGA, Toshio	MAG	kasugat@post.kek.jp
KOBAYASHI, Yukinori	MAG	yukinori.kobayashi@kek.jp
MAEZAWA, Hideki	CHNL	hideki.maezawa@kek.jp
MISHINA, Atsushi	CONTROL	Atsushi.MISHINA@kek.jp
MITSUHASHI, Toshiyuki	I&W	toshiyuki.mitsubishi@kek.jp
MIYAJIMA, Tsukasa	MAG	tsukasa.miyajima@kek.jp
MIYAUCHI, Hiroshi	CHNL	hiroshi.miyauchi@kek.jp
NAGAHASHI, Shinya	MAG	shinya.nagahashi@kek.jp
NOGAMI, Takashi	I&W	takashi.nogami@kek.jp
OBINA, Takashi	CONTROL	takashi.obina@kek.jp
PAK, Cheol On	CONTROL	cheol-on.pak@kek.jp
SAKANAKA, Shogo	RF	shogo.sakanaka@kek.jp
SASAKI, Hiroyuki	ID	hiroyuki.sasaki@kek.jp
SATO, Yoshihiro	CONTROL	yoshihiro.sato@kek.jp
SHIOYA, Tatsuro	ID	tatsuro.shioya@kek.jp
TADANO, Mikito	MONITOR	mikito.tadano@kek.jp
TAKAHASHI, Takeshi	RF	takeshi.takahashi@kek.jp
TANIMOTO, Yasunori	VAC	yasunori.tanimoto@kek.jp
TSUCHIYA, Kimichika	ID	kimichika.tsuchiya@kek.jp
UCHIYAMA, Takashi	VAC	takashi.uchiyama@kek.jp
UEDA, Akira	I&W	akira.ueda@kek.jp
UMEMORI, Kensei	RF	kensei.umemori@kek.jp
YAMAMOTO, Shigeru	ID	shigeru.yamamoto@kek.jp

Guest Professor

ARIMA, Takahisa	(Tohoku Univ.)
ASAKURA, Kiyotaka	(Hokkaido Univ.)
FUJIMORI, Atsushi	(The Univ. of Tokyo)
FUJINAMI, Masaki	(Chiba Univ.)
HAJIMA, Ryoichi	(JAEA)
HANAKI, Hirofumi	(JASRI/SPring-8)
KATO, Masahiro	(IMS)
KOSHIHARA, Shinya	(Tokyo Inst. Tech.)
WATANABE, Nobuhisa	(Hokkaido Univ.)

Postdoctoral Fellow

ASAKURA, Daisuke	daisuke.asakura@kek.jp	Jun. 20, 2006~
CAO, Xingzhong	caoxzh@post.kek.jp	
CHENG, Weixing		
ICHIYANAGI, Kohei	kouhei.ichiyangi@kek.jp	
ISHIJI, Kotaro		
JI, Kai	jjikai@post.kek.jp	
KAMAKURA, Nozomu	nozomu.kamakura@kek.jp	
KOIKE, Yuichiro	yuichiro.koike@kek.jp	
LEBECH, Mogens		
MAKSIMENKO, Anton	antonmx@post.kek.jp	
NIWA, Yasuhiro	yasuhiro.niwa@kek.jp	
YAMAZAKI, Masakazu	masaka@post.kek.jp	

Name	Responsibility	e-mail address
The Graduate University for Advanced Studies		
AKUTSU, Masato		
HASHIMOTO, Eiko		
KAKIUCH, Toru		
KAKIUCH, Takuhiro		
KOHYAMA, Junichi		
OBARA, Satoshi		
QIU, Yu		
RADOSINSKI Lukasz Tadeusz		
RAHIGHI, Simin		Oct. 6, 2006~
SUZUKI, Akio		
TANAKA, Momoko		
TOKI, Makoto		
YU, Jifeng		