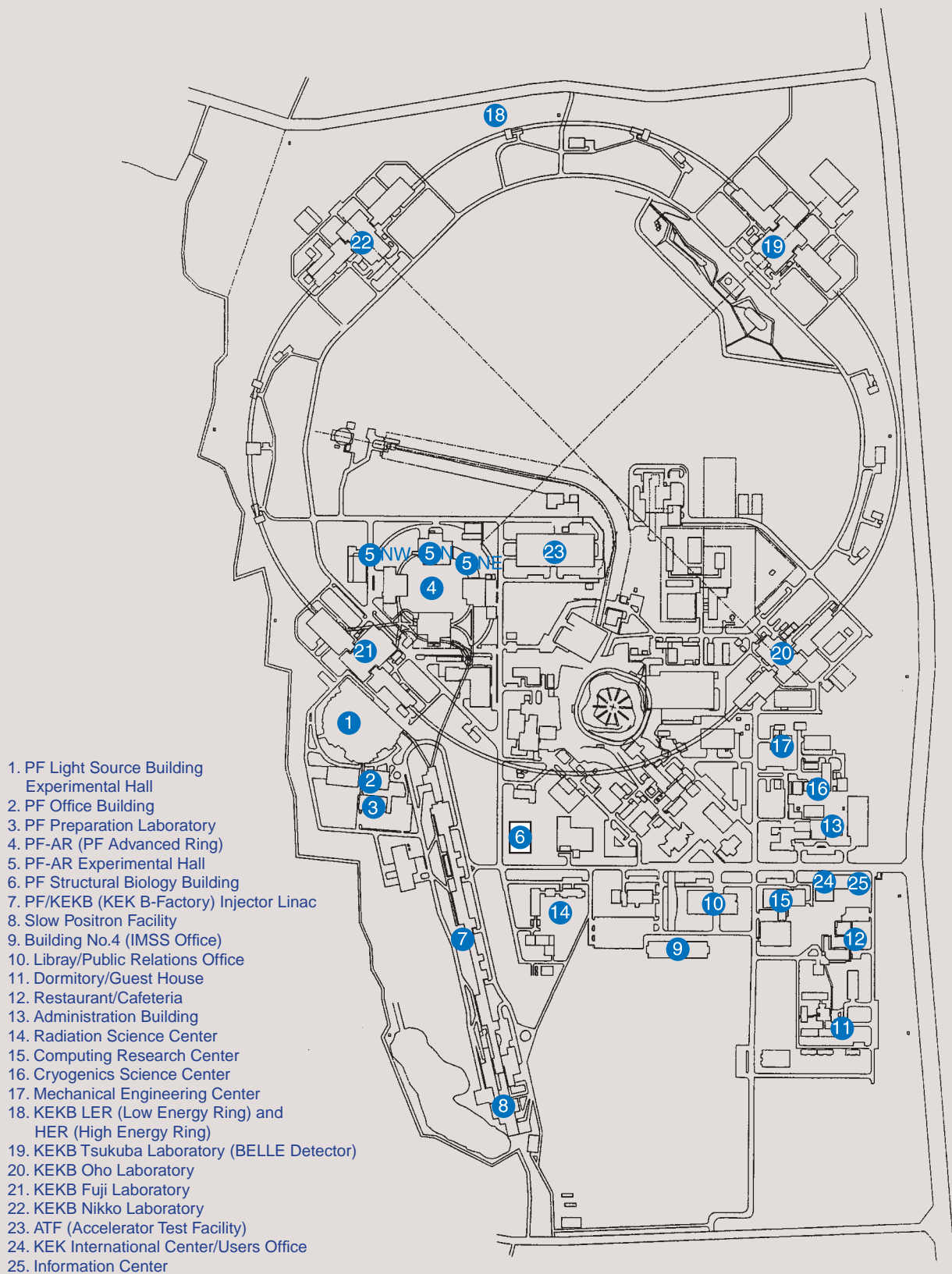


1. Site and Organization





KEK consists of four research institutions, i.e., the Institute of Materials Structure Science (IMSS), the Institute of Particle and Nuclear Studies, the Accelerator Laboratory, and the Applied Research Laboratory. As shown in Fig. 1, the Photon Factory (PF), the Neutron Science Laboratory, and the Muon Science Laboratory together constitute the IMSS, with the PF being a principal constituent of the IMSS. Table 1 shows a list of the members of the Advisory Committee for Institute of Materials Structure Science. The Committee is placed directly above the three committees, i.e., the Photon Factory Program Advisory Committee, the Neutron Science Laboratory Program Advisory Committee, and the Muon

Science Laboratory Program Advisory Committee. The organization chart of the PF is shown in Fig. 2. The PF consists of three divisions, i.e., the Synchrotron Radiation Science Divisions I and II, and the Light Source Division. Synchrotron Radiation Science Divisions I and II consist of seven groups such as Electronic Structure, Structural Material Science, Materials Chemistry, Life Sciences, Beamline Engineering Technical Services & Safety, User Support and Dissemination. The Light Source Division comprises several groups of the Magnet and Orbit, the Injection and Wiggler, the RF, the Vacuum, the Beam Channel, the Insertion, the Monitor, and the Control. The PF staff members are listed in Table 2.

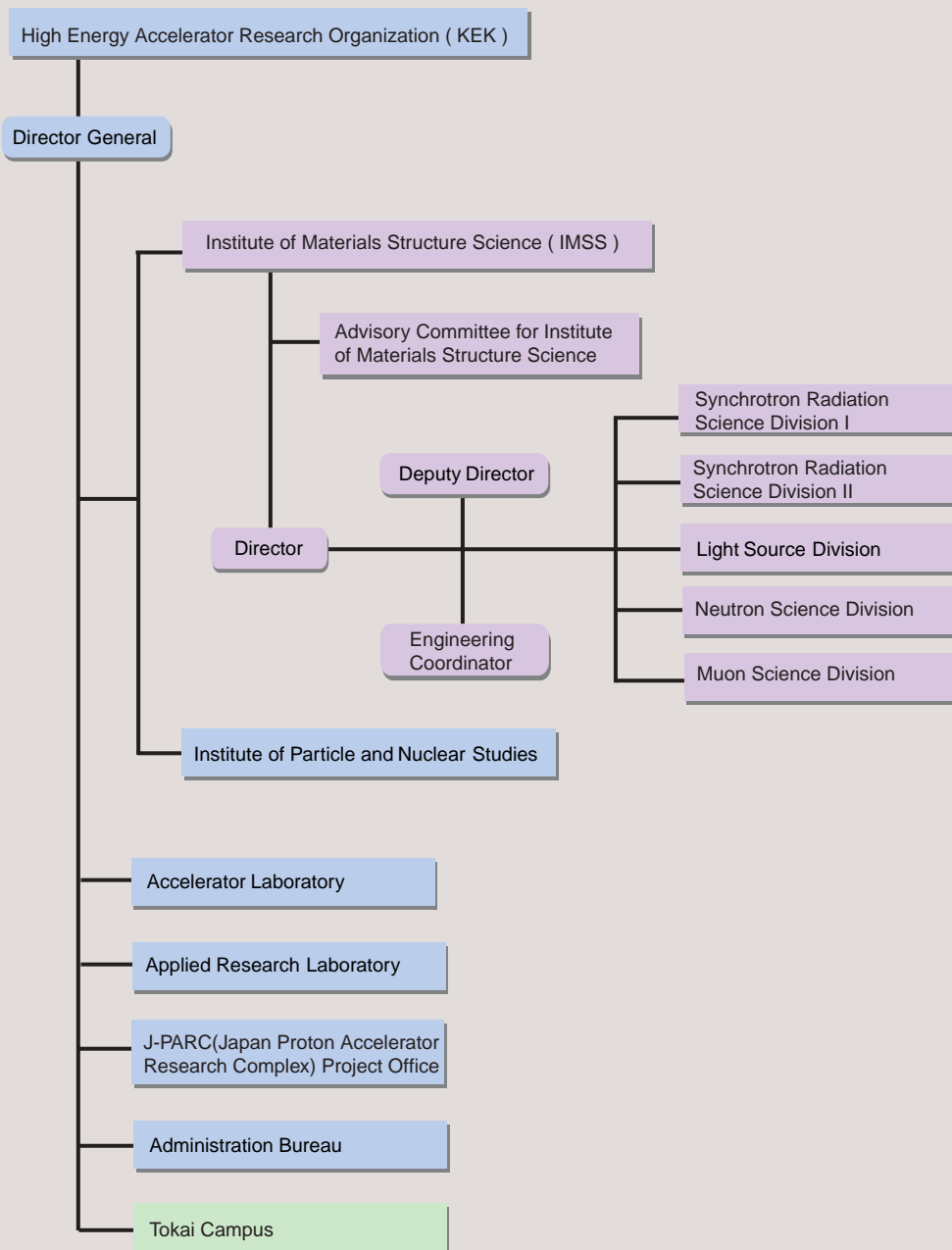


Figure 1
Organization chart of KEK.

Table 1 The members of the Advisory Committee for Institute of Materials Structure Science.

AKIMITSU, Jun	Aoyama Gakuin University
AMEMIYA, Yoshiyuki	The University of Tokyo
ARAI, Masatoshi	Japan Atomic Energy Agency
BAN, Shuichi	Applied Research Laboratory, KEK
IKEDA, Susumu*	Neutron Science Division, Deputy Director, IMSS
KADONO, Ryosuke	Neutron Science Division, IMSS
KAMIYAMA, Takashi	J-PARC Project Office, KEK
KASUGA, Toshio	Photon Factory, IMSS
KAWATA, Hiroshi	Photon Factory, IMSS
KUROKAWA, Shin-ichi	Accelerator Laboratory, KEK
MAEZAWA, Hideki	Photon Factory, IMSS
MURAKAMI, Yoichi	Tohoku University
NISHIDA, Nobuhiko**	Tokyo Institute of Technology
NISHIYAMA, Kusuo	Muon Science Division, IMSS
NOMURA, Masaharu	Photon Factory, IMSS
NOZAKI, Mitsuaki	Institute of Particle and Nuclear Studies, KEK
OSHIMA, Masaharu	The University of Tokyo
SAKATA, Makoto	Nagoya University
SATO, Kotaro	Accelerator Laboratory, KEK
SHIMIZU, Hirohiko	Neutron Science Division, IMSS
TAKATA, Masaki	RIKEN/SPring-8
TSUKIHARA, Tomitake	Osaka University
WAKATSUKI, Soichi	Photon Factory, IMSS
YOSHIZAWA, Hideki	The University of Tokyo, ISSP

* Chairman ** Vice-Chairman

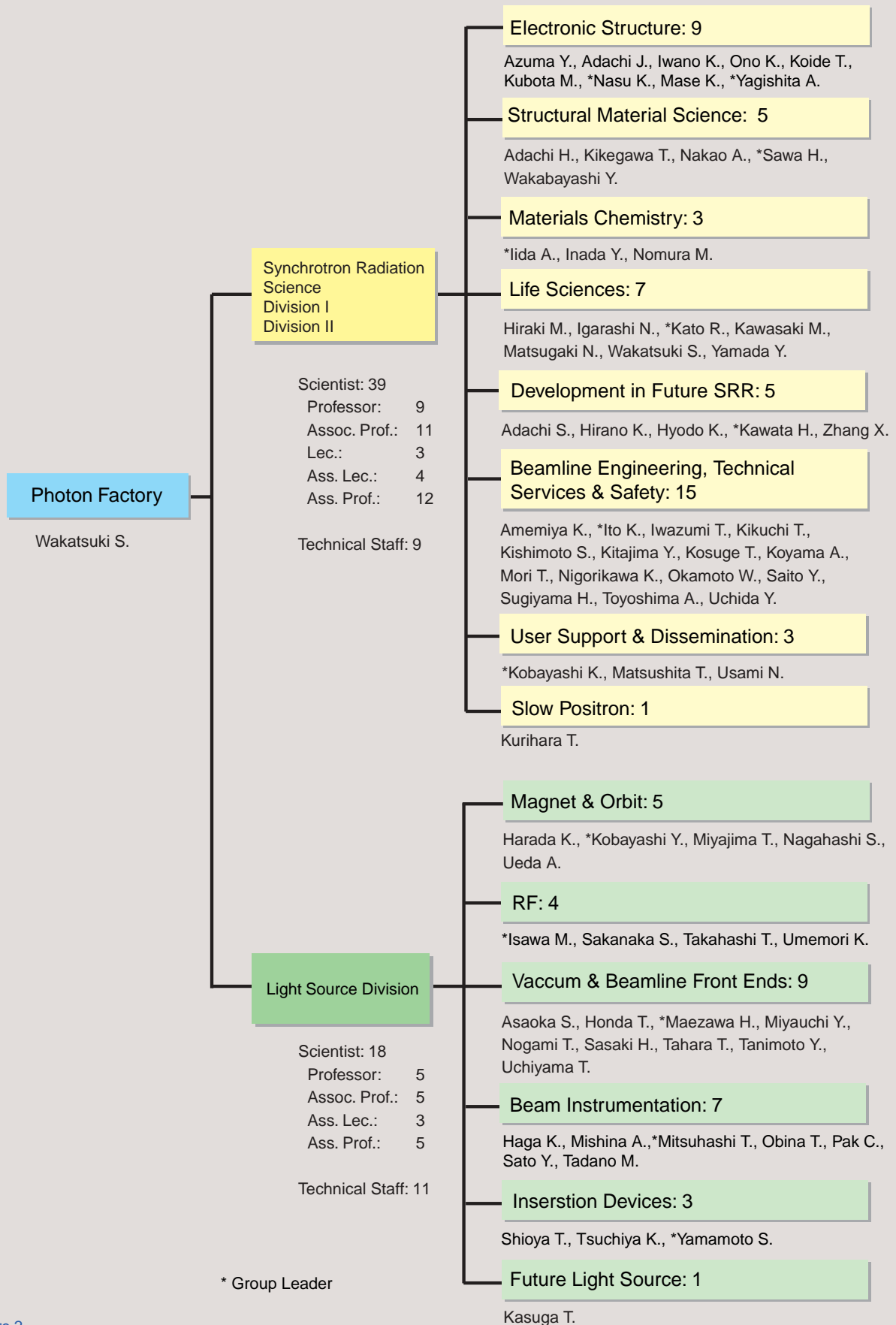


Figure 2
Organization chart of PF (as of March 31, 2007) .

Table 2 Staff members of the Photon Factory

Name	Responsibility	e-mail address	
Research Staff			
Director			
WAKATSUKI, Soichi	Director	soichi.wakatsuki@kek.jp	
Experimental Facilities Division I & II			
ADACHI, Hiromichi			~March 31, 2008
ADACHI, Jun-ichi	E.S.	jun-ichi.adachi@kek.jp	
ADACHI, Shinichi	D.F.	shinichi.adachi@kek.jp	
AMEMIYA, Kenta	B.E.T.S.S.	kenta.amemiya@kek.jp	
AZUMA, Yoshiro			~March 31, 2008
HIRAKI, Masahiko	L.S.	masahiko.hiraki@kek.jp	
HIRANO, Keiichi	D.F.	keiichi.hirano@kek.jp	
HYODO, Kazuyuki	D.F.	kazuyuki.hyodo@kek.jp	
IGARASHI, Noriyuki	L.S.	noriyuki.igarashi@kek.jp	
IIDA, Atsuo	M.C.	atsuo.iida@kek.jp	
INADA, Yasuhiro	M.C.	yasuhiro.inada@kek.jp	
ITO, Kenji	B.E.T.S.S.	kenji.ito@kek.jp	
IWANO, Kaoru	E.S.	kaoru.iwano@kek.jp	
IWAZUMI, Toshiaki			~March 31, 2008
KATO, Ryuichi	L.S.	ryuichi.kato@kek.jp	
KAWASAKI, Masato	L.S.	kawasaki@pfweis.kek.jp	
KAWATA, Hiroshi	D.F.	hiroshi.kawata@kek.jp	
KIKEGAWA, Takumi	S.M.S.	takumi.kikegawa@kek.jp	
KIKUCHI, Takashi	B.E.T.S.S.	takashi.kikuchi@kek.jp	
KISHIMOTO, Shunji	B.E.T.S.S.	shunji.kishimoto@kek.jp	
KITAJIMA, Yoshinori	B.E.T.S.S.	yoshinori.kitajima@kek.jp	
KOBAYASHI, Katsumi	U.S.D.	katsumi.kobayashi@kek.jp	
KOIDE, Tsuneharu	E.S.	tsuneharu.koide@kek.jp	
KOSUGE, Takashi	B.E.T.S.S.	takashi.kosuge@kek.jp	
KOYAMA, Atsushi	B.E.T.S.S.	atsushi.koyama@kek.jp	
KUBOTA, Masato	E.S.	masato.kubota@kek.jp	
KURIHARA, Toshikazu	S.P.	toshikazu.kurihara@kek.jp	
MASE, Kazuhiko	E.S.	kazuhiko.mase@kek.jp	
MATSUGAKI, Naohiro	L.S.	naohiro.matsugaki@kek.jp	
MATSUSHITA, Tadashi		tadashi.matsushita@kek.jp	~March 31, 2008
MORI, Takeharu	B.E.T.S.S.	takeharu.mori@kek.jp	
NAKAO, Akiko	S.M.S.	akiko.nakao@kek.jp	
NASU, Keiichiro	E.S.	keiichiro.nasu@kek.jp	
NIGORIKAWA, Kazuyuki	B.E.T.S.S.	kazuyuki.nigorikawa@kek.jp	
NOMURA, Masaharu	M.C.	masaharu.nomura@kek.jp	
OKAMOTO, Wataru	B.E.T.S.S.	wataru.okamoto@kek.jp	
ONO, Kanta	E.S.	kanta.ono@kek.jp	
SAITO, Yuuki	B.E.T.S.S.	yuuki.saito@kek.jp	
SAWA, Hiroshi			~March 31, 2008
SUGIYAMA, Hiroshi	B.E.T.S.S.	hiroshi.sugiyama@kek.jp	
TOYOSHIMA, Akio	B.E.T.S.S.	akio.toyoshima@kek.jp	
UCHIDA, Yoshinori	B.E.T.S.S.	yoshinori.uchida@kek.jp	
USAMI, Noriko	U.S.D.	noriko.usami@kek.jp	
WAKABAYASHI, Yusuke	S.M.S.	yusuke.wakabayashi@kek.jp	
YAGISHITA, Akira	E.S.	akira.yagishita@kek.jp	
YAMADA, Yusuke	L.S.	yama@post.kek.jp	
ZHANG, Xiaowei	D.F.	zhang.xiaowei@kek.jp	

Name	Responsibility	e-mail address
Light Source Divison		
ASAOKA, Seiji	VAC&BL Front Ends	seiji.asaoka@kek.jp
HAGA, Kaiichi	Beam Inst.	kaiichi.haga@kek.jp
HARADA, Kentaro	MAG&Orbit	kentaro.harada@kek.jp
HONDA, Tohru	VAC&BL Front Ends	tohru.honda@kek.jp
ISAWA, Masaaki	RF	isawa@post.kek.jp
KASUGA, Toshio	FLS	kasugat@post.kek.jp
KOBAYASHI, Yukinori	MAG&Orbit	yukinori.kobayashi@kek.jp
MAEZAWA, Hideki	VAC&BL Front Ends	hideki.maezawa@kek.jp
MISHINA, Atsushi	Beam Inst.	Atsushi.MISHINA@kek.jp
MITSUHASHI, Toshiyuki	Beam Inst.	toshiyuki.mitsuhashi@kek.jp
MIYAJIMA, Tsukasa	MAG&Orbit	tsukasa.miyajima@kek.jp
MIYAUCHI, Hiroshi	VAC&BL Front Ends	hiroshi.miyauchi@kek.jp
NAGAHASHI, Shinya	MAG&Orbit	shinya.nagahashi@kek.jp
NOGAMI, Takashi	VAC&BL Front Ends	takashi.nogami@kek.jp
OBINA, Takashi	Beam Inst.	takashi.obina@kek.jp
PAK, Cheol On	Beam Inst.	cheol-on.pak@kek.jp
SAKANAKA, Shogo	RF	shogo.sakanaka@kek.jp
SASAKI, Hiroyuki	VAC&BL Front Ends	hiroyuki.sasaki@kek.jp
SATO, Yoshihiro	Beam Inst.	yoshihiro.sato@kek.jp
SHIOYA, Tatsuro	ID	tatsuro.shioya@kek.jp
TADANO, Mikito	Beam Inst.	mikito.tadano@kek.jp
TAHARA, Toshihiro	VAC&BL Front Ends	ttahara@post.kek.jp
TAKAHASHI, Takeshi	RF	takeshi.takahashi@kek.jp
TANIMOTO, Yasunori	VAC&BL Front Ends	yasunori.tanimoto@kek.jp
TSUCHIYA, Kimichika	ID	kimichika.tsuchiya@kek.jp
UCHIYAMA, Takashi	VAC&BL Front Ends	takashi.uchiyama@kek.jp
UEDA, Akira	MAG&Orbit	akira.ueda@kek.jp
UMEMORI, Kensei	RF	kensei.umemori@kek.jp
YAMAMOTO, Shigeru	ID	shigeru.yamamoto@kek.jp

Guest Professor

ARIMA, Takahisa	(Tohoku Univ.)
ASAKURA, Kiyotaka	(Hokkaido Univ.)
FUJIMORI, Atsushi	(The Univ. of Tokyo)
FUJINAMI, Masaki	(Chiba Univ.)
HAJIMA, Ryoichi	(JAEA)
HANAOKI, Hirofumi	(JASRI/SPRing-8)
KATO, Masahiro	(IMS)
KOSHIHARA, Shinya	(Tokyo Inst. Tech.)
OHTANI, Eiji	(Tohoku Univ.)
WATANABE, Nobuhisa	(Nagoya Univ.)

Postdoctoral Fellow

ASAKURA, Daisuke	daisuke.asakura@kek.jp	
CAO, Xingzhong	caoxzh@post.kek.jp	
ICHIYANAGI, Kohei	kouhei.ichiyangi@kek.jp	
JI, Kai	jkai@post.kek.jp	
KAMAKURA, Nozomu	nozomu.kamakura@kek.jp	
KOIKE, Yuichiro		~Mar. 31, 2008
MAEDA, Munetoshi		~Mar. 31, 2008
MAKSIMENKO, Anton		~Mar. 31, 2008
NIWA, Yasuhiro	yasuhiro.niwa@kek.jp	
OHNISHI, Hiromasa		~Mar. 31, 2008
SUMII Ryohei	sumii@post.kek.jp	Oct. 1, 2007~
YAMAZAKI, Masakazu	masaka@post.kek.jp	
YU, Jifeng	yujif@post.kek.jp	

Name	Responsibility	e-mail address
The Graduate University for Advanced Studies		
KAKIUCH, Takuhiro		
KOHYAMA, Junichi		
KOTANI, Yoshinori		
RADOSINSKI Lukasz Tadeusz		
RAHIGHI, Simin		
TANAKA, Momoko		
ROHAIM, Ahmed		

Oct. 5, 2007~