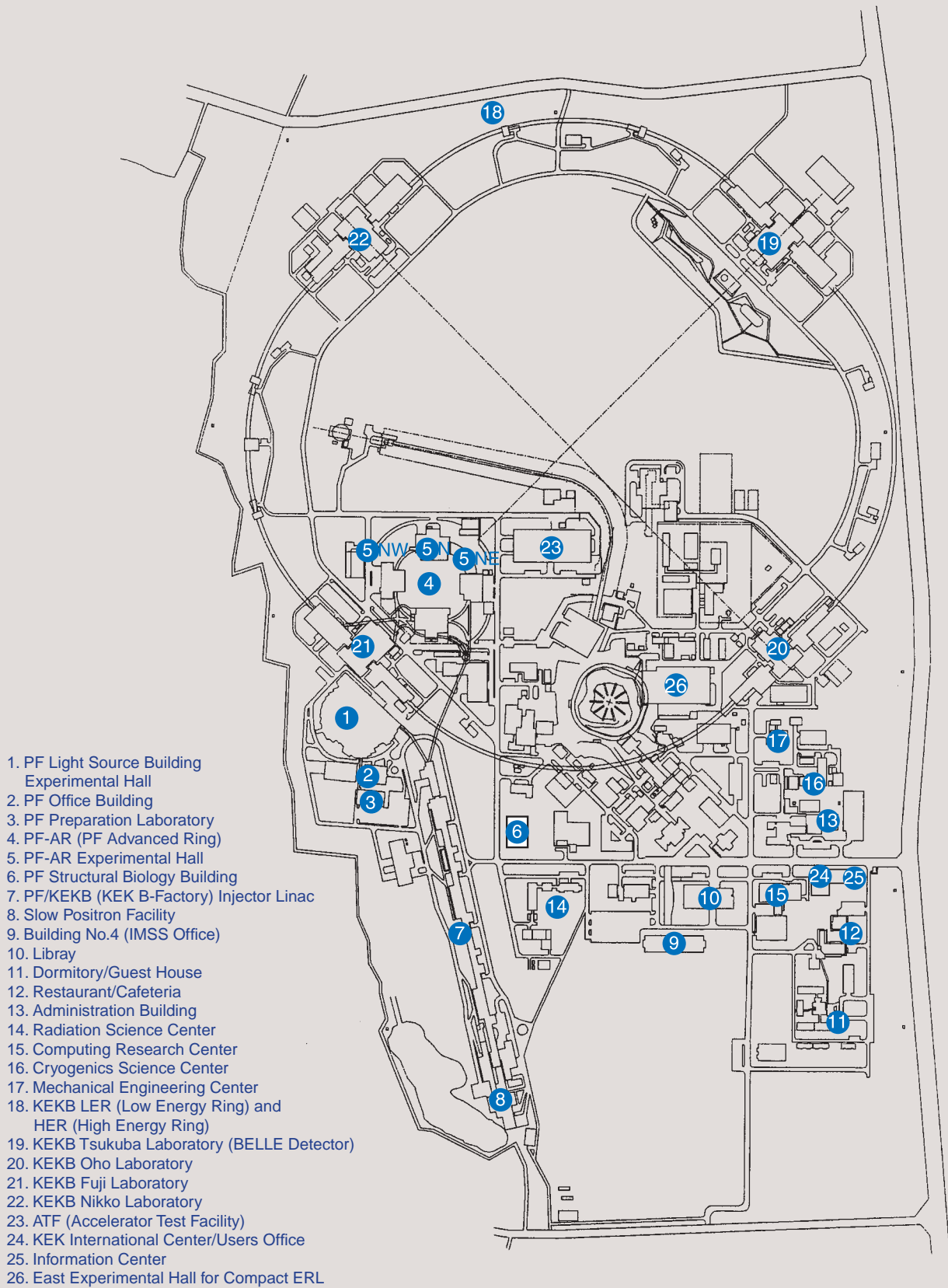


1. Site and Organization





KEK consists of four research institutions, i.e., the Institute of Materials Structure Science (IMSS), the Institute of Particle and Nuclear Studies, the Accelerator Laboratory, and the Applied Research Laboratory. As shown in Fig. 1, the Photon Factory (PF), the Neutron Science Laboratory, and the Muon Science Laboratory together constitute the IMSS, with the PF being a principal constituent of the IMSS. Table 1 shows a list of the members of the Advisory Committee for Institute of Materials Structure Science. The Committee is placed directly above the three committees, i.e., the Photon Factory Program Advisory Committee, the Neutron Science Laboratory Program Advisory Committee, and the Muon

Science Laboratory Program Advisory Committee. The organization chart of the PF is shown in Fig. 2. The PF consists of three divisions, i.e., the Synchrotron Radiation Science Divisions I and II, and the Light Source Division. Synchrotron Radiation Science Divisions I and II consist of seven groups such as "Electronic Structure", "Structural Material Science," "Materials Chemistry," "Life Sciences," "Beamline Engineering, Technical Services & Safety," "User Support and Dissemination." The Light Source Division comprises six groups of Magnet & Orbit, RF, Vacuum & Beamline Front Ends, Beam Instrumentation, Insertion Devices and Future Light Source. The PF staff members are listed in Table 2.

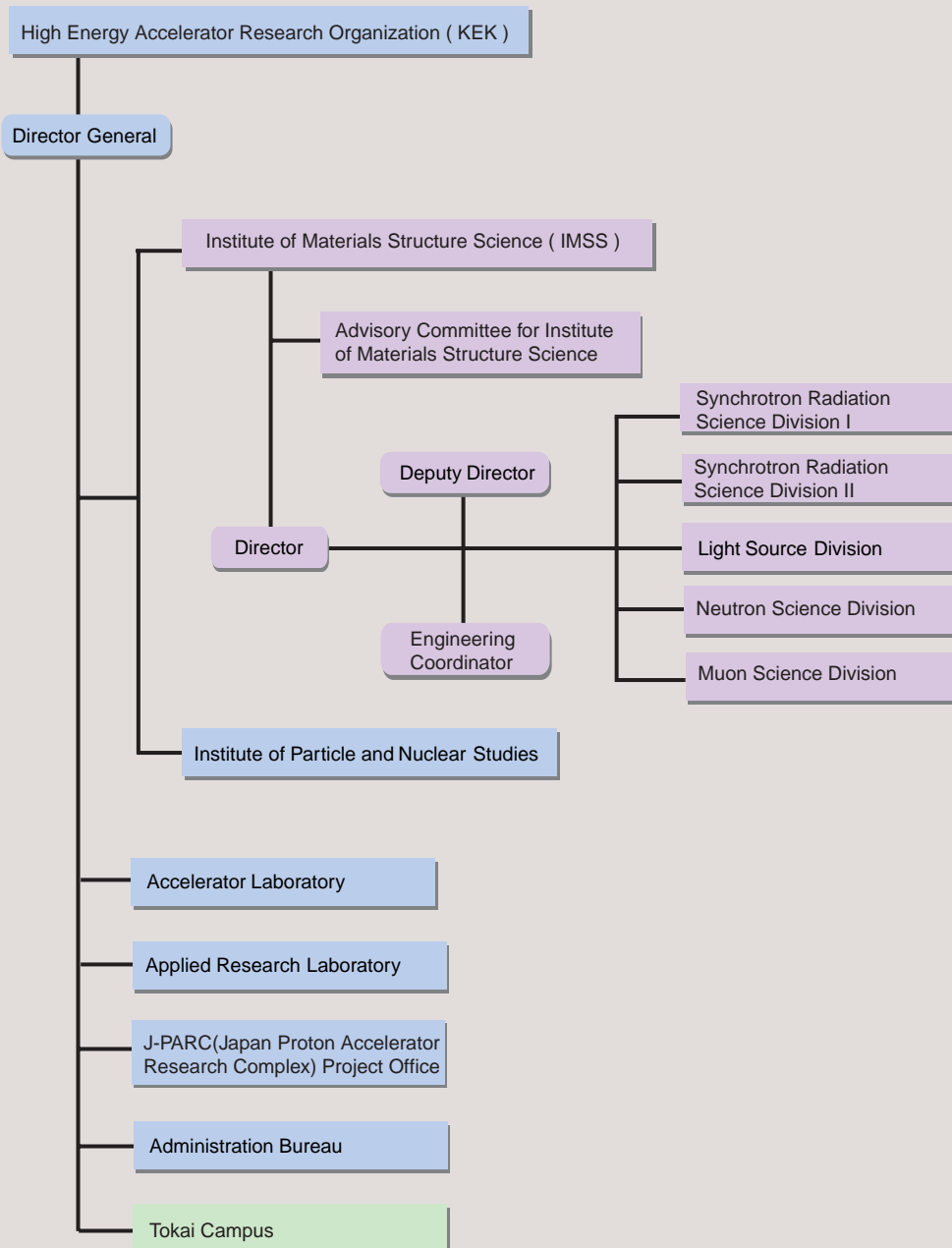


Figure 1
Organization chart of KEK.

Table 1 The members of the Advisory Committee for Institute of Materials Structure Science.

AKIMITSU, Jun	Aoyama Gakuin University
AMEMIYA, Yoshiyuki	The University of Tokyo
ARAI, Masatoshi	Japan Atomic Energy Agency
BAN, Shuichi	Applied Research Laboratory, KEK
IKEDA, Susumu*	Neutron Science Division, Deputy Director, IMSS
KADONO, Ryosuke	Neutron Science Division, IMSS
KAMIYAMA, Takashi	J-PARC Project Office, KEK
KASUGA, Toshio	Photon Factory, IMSS
KAWATA, Hiroshi	Photon Factory, IMSS
KUROKAWA, Shin-ichi	Accelerator Laboratory, KEK
MAEZAWA, Hideki	Photon Factory, IMSS
MURAKAMI, Yoichi	Tohoku University
NISHIDA, Nobuhiko**	Tokyo Institute of Technology
NISHIYAMA, Kusuo	Muon Science Division, IMSS
NOMURA, Masaharu	Photon Factory, IMSS
NOZAKI, Mitsuaki	Institute of Particle and Nuclear Studies, KEK
OSHIMA, Masaharu	The University of Tokyo
SAKATA, Makoto	Nagoya University
SATO, Kotaro	Accelerator Laboratory, KEK
SHIMIZU, Hirohiko	Neutron Science Division, IMSS
TAKATA, Masaki	RIKEN/SPring-8
TSUKIHARA, Tomitake	Osaka University
WAKATSUKI, Soichi	Photon Factory, IMSS
YOSHIZAWA, Hideki	The University of Tokyo, ISSP

* Chairperson ** Vice-Chairperson

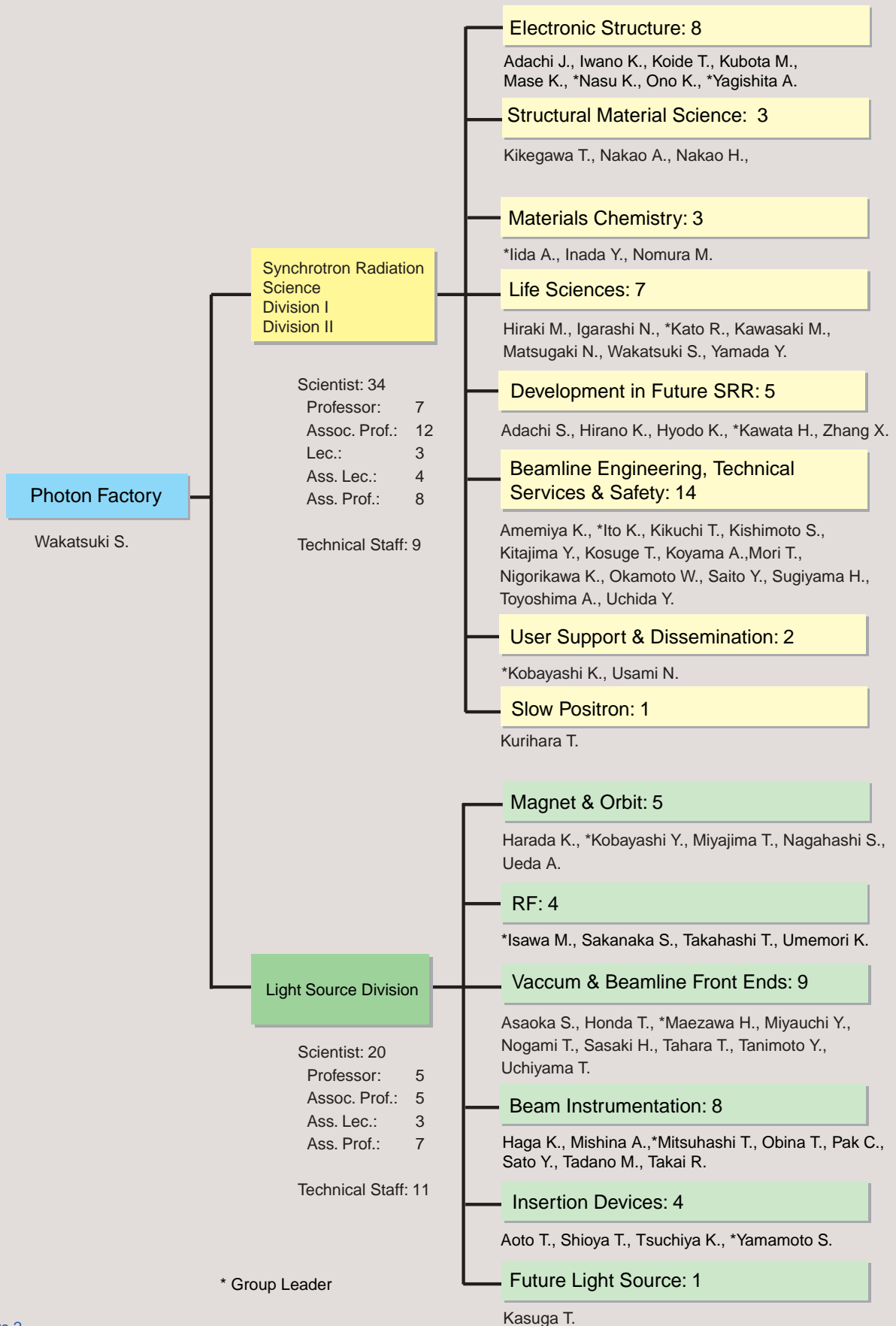


Figure 2
Organization chart of PF (as of March 31, 2009) .

Table 2 Staff members of the Photon Factory

Name	Group*	e-mail address	
Research Staff			
Director			
WAKATSUKI, Soichi	LS	soichi.wakatsuki@kek.jp	
Synchrotron Radiation Science Division I & II			
ADACHI, Jun-ichi	ES	jun-ichi.adachi@kek.jp	
ADACHI, Shinichi	DF	shinichi.adachi@kek.jp	
AMEMIYA, Kenta	BETSS	kenta.amemiya@kek.jp	
HIRAKI, Masahiko	LS	masahiko.hiraki@kek.jp	
HIRANO, Keiichi	DF	keiichi.hirano@kek.jp	
HYODO, Kazuyuki	DF	kazuyuki.hyodo@kek.jp	
IGARASHI, Noriyuki	LS	noriyuki.igarashi@kek.jp	
IIDA, Atsuo	MC	atsuo.iida@kek.jp	
INADA, Yasuhiro	MC		~Mar. 31, 2009
ITO, Kenji	BETSS	kenji.ito@kek.jp	
IWANO, Kaoru	ES	kaoru.iwano@kek.jp	
KATO, Ryuichi	LS	ryuichi.kato@kek.jp	
KAWASAKI, Masato	LS	kawasaki@pfweis.kek.jp	
KAWATA, Hiroshi	DF	hiroshi.kawata@kek.jp	
KIKEGAWA, Takumi	SMS	takumi.kikegawa@kek.jp	
KIKUCHI, Takashi	BETSS	takashi.kikuchi@kek.jp	
KISHIMOTO, Shunji	BETSS	syunji.kishimoto@kek.jp	
KITAJIMA, Yoshinori	BETSS	yoshinori.kitajima@kek.jp	
KOBAYASHI, Katsumi	USD	katsumi.kobayashi@kek.jp	
KOIDE, Tsuneharu	ES	tsuneharu.koide@kek.jp	
KOSUGE, Takashi	BETSS	takashi.kosuge@kek.jp	
KOYAMA, Atsushi	BETSS	atsushi.koyama@kek.jp	
KUBOTA, Masato	ES	masato.kubota@kek.jp	
KURIHARA, Toshikazu	SP	toshikazu.kurihara@kek.jp	
MASE, Kazuhiko	ES	kazuhiko.mase@kek.jp	
MATSUGAKI, Naohiro	LS	naohiro.matsugaki@kek.jp	
MORI, Takeharu	BETSS	takeharu.mori@kek.jp	
NAKAO, Akiko	SMS	akiko.nakao@kek.jp	
NAKAO, Hironori	SMS	hironori.nakao@kek.jp	Feb. 1 2009~
NASU, Keiichiro	ES	keiichiro.nasu@kek.jp	
NIGORIKAWA, Kazuyuki	BETSS	kazuyuki.nigorikawa@kek.jp	
NOMURA, Masaharu	MC	masaharu.nomura@kek.jp	
OKAMOTO, Wataru	BETSS		~Mar. 31, 2009
ONO, Kanta	ES	kanta.ono@kek.jp	
SAITO, Yuuki	BETSS	yuuki.saito@kek.jp	
SUGIYAMA, Hiroshi	BETSS	hiroshi.sugiyama@kek.jp	
TOYOSHIMA, Akio	BETSS	akio.toyoshima@kek.jp	
UCHIDA, Yoshinori	BETSS	yoshinori.uchida@kek.jp	
USAMI, Noriko	USD	noriko.usami@kek.jp	
WAKABAYASHI, Yusuke	SMS		~Nov. 30 2008
YAGISHITA, Akira	ES	akira.yagishita@kek.jp	
YAMADA, Yusuke	LS	yama@post.kek.jp	
ZHANG, Xiaowei	DF	zhang.xiaowei@kek.jp	

Name	Group*	e-mail address	
Light Source Division			
AOTO, Tomohiro	ID	tomohiro.aoto@kek.jp	Sep. 1 2008~
ASAOKA, Seiji	VAC&BL Front Ends	seiji.asaoka@kek.jp	
HAGA, Kaiichi	Beam Inst.	kaiichi.haga@kek.jp	
HARADA, Kentaro	MAG&Orbit	kentaro.harada@kek.jp	
HONDA, Tohru	VAC&BL Front Ends	tohru.honda@kek.jp	
ISAWA, Masaaki	RF	isawa@post.kek.jp	
KASUGA, Toshio	FLS	kasugat@post.kek.jp	
KOBAYASHI, Yukinori	MAG&Orbit	yukinori.kobayashi@kek.jp	
MAEZAWA, Hideki	VAC&BL Front Ends	hideki.maezawa@kek.jp	
MISHINA, Atsushi	Beam Inst.	Atsushi.MISHINA@kek.jp	
MITSUHASHI, Toshiyuki	Beam Inst.		
MIYAJIMA, Tsukasa	MAG&Orbit	tsukasa.miyajima@kek.jp	
MIYAUCHI, Hiroshi	VAC&BL Front Ends	hiroshi.miyauchi@kek.jp	
NAGAHASHI, Shinya	MAG&Orbit	shinya.nagahashi@kek.jp	
NOGAMI, Takashi	VAC&BL Front Ends	takashi.nogami@kek.jp	
OBINA, Takashi	Beam Inst.	takashi.obina@kek.jp	
PAK, Cheol On	Beam Inst.	cheol-on.pak@kek.jp	
SAKANAKA, Shogo	RF	shogo.sakanaka@kek.jp	
SASAKI, Hiroyuki	VAC&BL Front Ends	hiroyuki.sasaki@kek.jp	
SATO, Yoshihiro	Beam Inst.	yoshihiro.sato@kek.jp	
SHIOYA, Tatsuro	ID	tatsuro.shioya@kek.jp	
TADANO, Mikito	Beam Inst.	mikito.tadano@kek.jp	
TAHARA, Toshihiro	VAC&BL Front Ends	ttahara@post.kek.jp	
TAKAHASHI, Takeshi	RF	takeshi.takahashi@kek.jp	
TAKAI, Ryota	Beam Inst.	ryota.takai@kek.jp	June 1 2008~
TANIMOTO, Yasunori	VAC&BL Front Ends	yasunori.tanimoto@kek.jp	
TSUCHIYA, Kimichika	ID	kimichika.tsuchiya@kek.jp	
UCHIYAMA, Takashi	VAC&BL Front Ends	takashi.uchiyama@kek.jp	
UEDA, Akira	MAG&Orbit	akira.ueda@kek.jp	
UMEMORI, Kensei	RF	kensei.umemori@kek.jp	
YAMAMOTO, Shigeru	ID	shigeru.yamamoto@kek.jp	

Guest Professor

ARIMA, Takahisa	(Tohoku Univ.)
ASAKURA, Kiyotaka	(Hokkaido Univ.)
FUJIMORI, Atsushi	(The Univ. of Tokyo)
FUJINAMI, Masanori	(Chiba Univ.)
HAJIMA, Ryoichi	(JAEA)
HANAKI, Hirofumi	(JASRI/SPRing-8)
KATO, Masahiro	(IMS)
KOSHIHARA, Shinya	(Tokyo Inst. Tech.)
OHTANI, Eiji	(Tohoku Univ.)
WATANABE, Nobuhisa	(Nagoya Univ.)

Postdoctoral Fellow

ASAKURA, Daisuke	~Mar. 31, 2009
JI, Kai	~Sep. 20, 2008
KAMAKURA, Nozomu	~Mar. 31, 2009

Name	Group*	e-mail address	
KONISHI, Yusuke		ykonishi@post.kek.jp	
NISHIOKA, Keita		knishi@post.kek.jp	
NIWA, Yasuhiro		yasuhiro.niwa@kek.jp	
OHNISHI, Hiromasa		ohni@post.kek.jp	
SHIMADA, Miho		miho.shimada@kek.jp	
SUMII, Ryohei		sumii@post.kek.jp	
WATANABE, Ritsu		ritsu@post.kek.jp	
YAMAZAKI, Masakazu			~Sep. 30, 2008
YU, Jifeng			~Mar. 30, 2009

The Graduate University for Advanced Studies

KOUYAMA, Junichi
 KOTANI, Yoshinori
 NAKAMURA, Kensuke
 OHKUBO, Ken
 RADOSINSKI Lukasz Tadeusz
 RAHIGHI, Simin
 ROHAIM, Ahmed

* Synchrotron Radiation Science Division

ES	Electronic Structure
SMS	Structural Material Science
MC	Materials Chemistry
LS	Life Sciences
DF	Development in Future SRR
BETSS	Beamline Engineering, Technical Services and Safety
USD	User Support and Dissemination
SP	Slow Positron

* Light Source Division

MAG & Orbit	Magnet and Orbit
RF	Radio Frequency
VAC & BL Front Ends	Vaccum & Beamline Front Ends
Beam Inst.	Beam Instrumentation
ID	Insertion Devices
FLS	Future Light Source