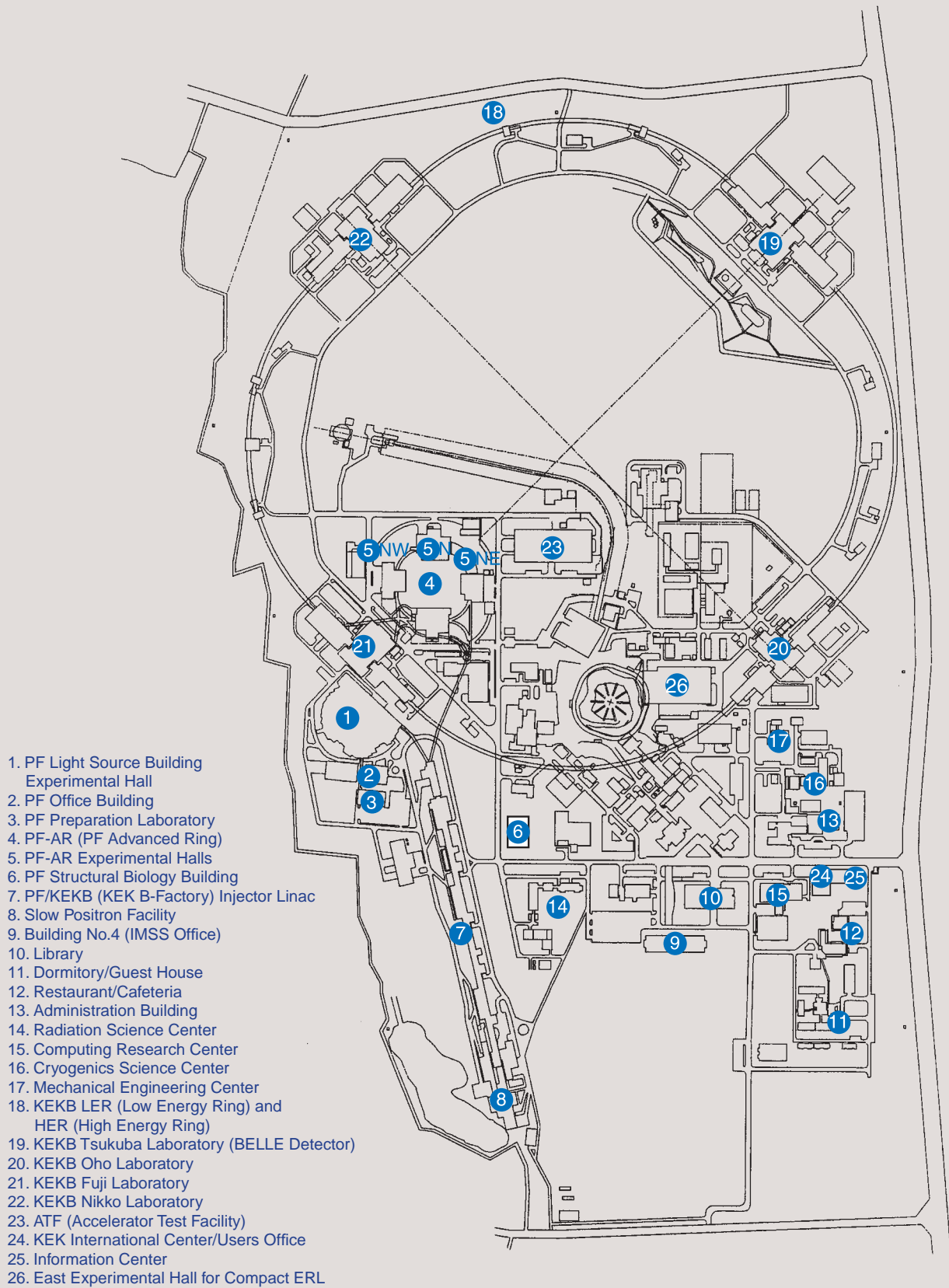


1. Site and Organization





KEK consists of four research institutions, i.e., the Institute of Materials Structure Science (IMSS), the Institute of Particle and Nuclear Studies (IPNS), the Accelerator Laboratory (AL), and the Applied Research Laboratory. As shown in Fig. 1, the IMSS constitutes the Synchrotron Radiation Divisions I and II, the Neutron Science Division, the Muon Science Division, the Structural Biology Research Center, and the Condensed Matter Research Center. Table I shows a list of the members of the Advisory Committee of the IMSS.

The former Light Source Division of the IMSS, that had formed one of the divisions of the Photon Factory together with the Synchrotron Radiation Divisions I and II and taken a crucial role in developing and maintaining the PF two rings until March 2009, has been administratively renewed as the Accelerator Division VII

of the AL since April 2009. However, the organization chart of the PF is not practically changed as shown in Fig. 2. Synchrotron Radiation Science Divisions I and II consist of seven groups such as “Electronic Structure,” “Structural Material Science,” “Materials Chemistry,” “Life Sciences,” “Beamline Engineering, Technical Services & Safety,” “User Support and Dissemination.” The Accelerator Division VII (the former Light Source Division) has six groups, which are named Light Source Group I to VI. The missions of each group are as follows: Group I is in charge of orbits, magnets, and insertion devices, Group II of RF, SC cavities and so on, Group III mainly of vacuum, Group IV mainly of beam diagnostics and accelerator control, Group V of front-end, safety and so on, and Group VI mainly of electron guns.

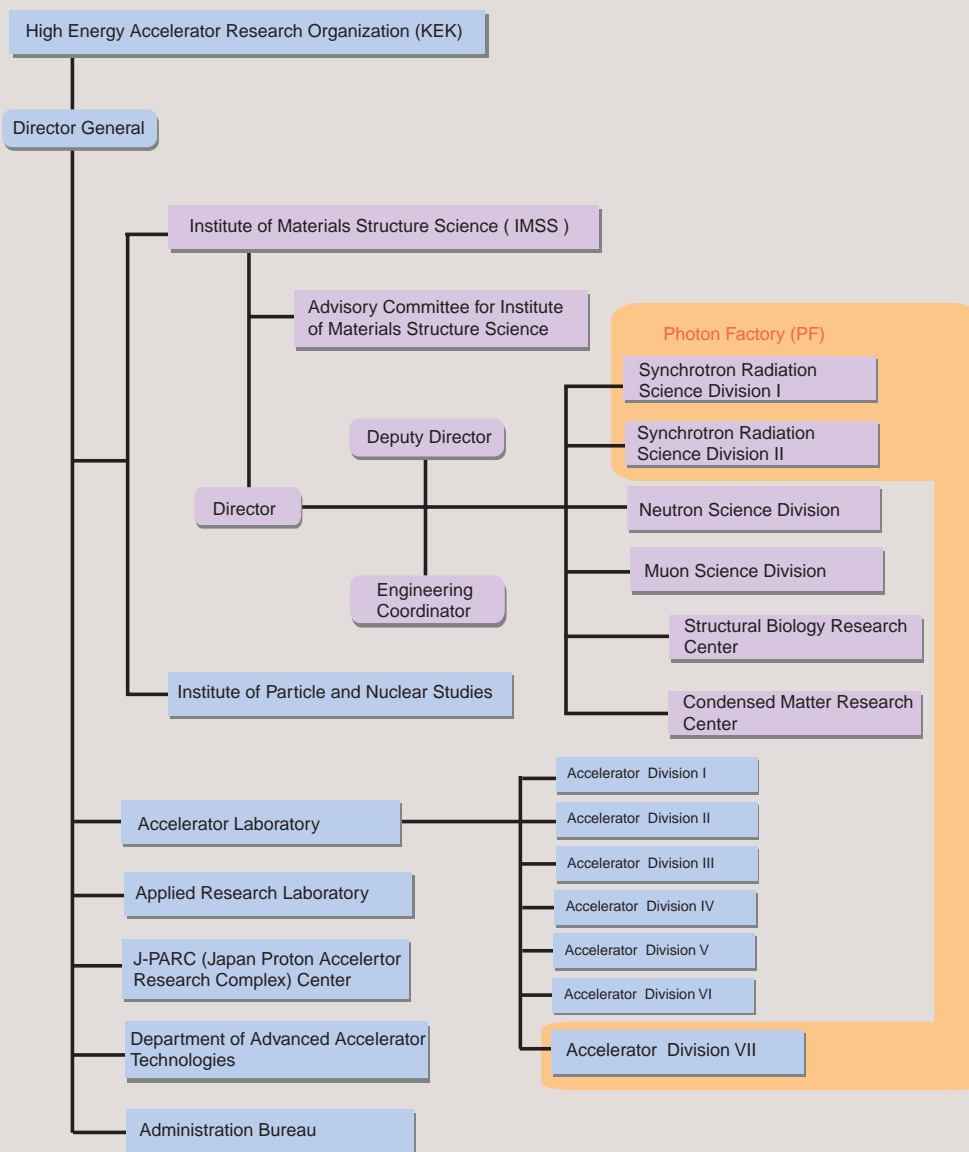


Figure 1 Organization chart of KEK.

Table 1 The members of the Advisory Committee for Institute of Materials Structure Science.

AKIMITSU, Jun	Aoyama Gakuin University
ASAKURA, Kiyotaka	Hokkaido University, CRC
BAN, Shuichi	Applied Research Laboratory, KEK
ENOMOTO, Atsushi	Accelerator Laboratory, KEK
FUJII, Yasuhiko	Japan Atomic Energy Agency
IKEDA, Susumu*	Neutron Science Division, IMSS
ITO, Kenji	Photon Factory, IMSS
KADONO, Ryosuke	Neutron Science Division, IMSS
KAWATA, Hiroshi	Photon Factory, IMSS
KISHIMOTO, Shunji	Photon Factory, IMSS
KOBAYASHI, Yukinori	Photon Factory, IMSS (Accelerator Laboratory, KEK)
MIKI, Kunio	Kyoto University
MIYAKE, Yasuhiro	Muon Science Division, IMSS
MURAKAMI, Youichi	Photon Factory, IMSS
NOMURA, Masaharu	Photon Factory, IMSS
OSHIMA, Masaharu	The University of Tokyo
SAITO, Naohito	Institute of Particle Nuclear Studies
SAKATA, Makoto**	Nagoya University
SETO, Hideki	Neutron Science Division, IMSS
SHIBAYAMA, Mitsuhiro	The University of Tokyo, ISSP
TAKATA, Masaki	RIKEN/SPring-8
TORIKAI, Eiko	Yamanashi University
WAKATSUKI, Soichi	Photon Factory, IMSS
YAMADA, Kazuyoshi	Tohoku University, WPI-AIMR

* Chairperson ** Vice-Chairperson

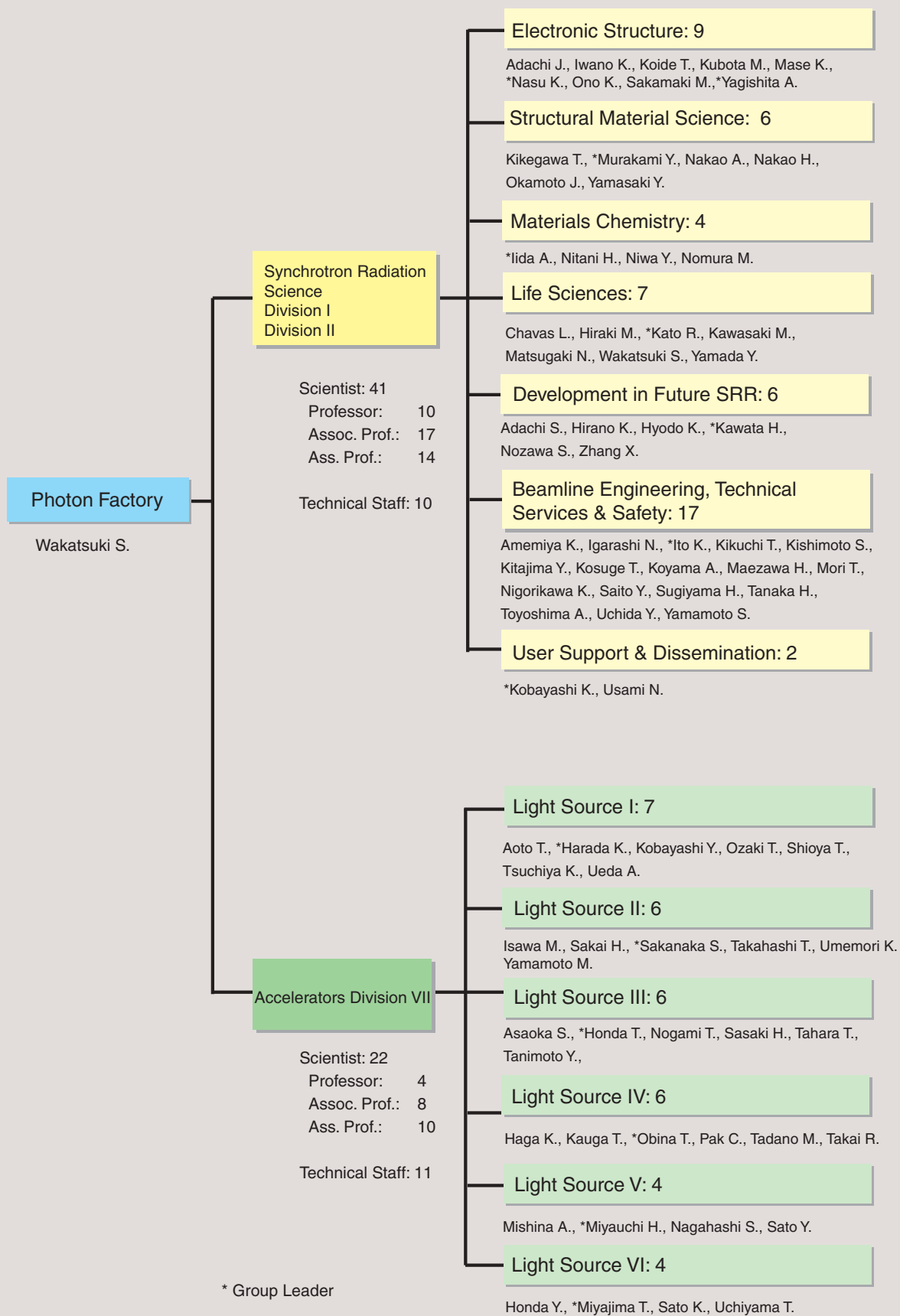


Figure 2
Organization chart of PF (as of March 31, 2010) .

Table 2 Staff members of the Photon Factory.

Name	Group*	e-mail address	
Research Staff			
Director			
WAKATSUKI, Soichi	LS	soichi.wakatsuki@kek.jp	
Synchrotron Radiation Science Division I & II			
ADACHI, Jun-ichi	ES	jun-ichi.adachi@kek.jp	
ADACHI, Shinichi	DF (SMS)	shinichi.adachi@kek.jp	
AMEMIYA, Kenta	BETSS (ES)	kenta.amemiya@kek.jp	
CHAVAS, Leonard	LS	leonard.chavas@kek.jp	April 1 2009~
HIRAKI, Masahiko	LS	masahiko.hiraki@kek.jp	
HIRANO, Keiichi	DF	keiichi.hirano@kek.jp	
HYODO, Kazuyuki	DF (BETSS)	kazuyuki.hyodo@kek.jp	
IGARASHI, Noriyuki	BETSS (LS)	noriyuki.igarashi@kek.jp	
IIDA, Atsuo	MC	atsuo.iida@kek.jp	
ITO, Kenji	BETSS (ES)	kenji.ito@kek.jp	
IWANO, Kaoru	ES (DF)	kaoru.iwano@kek.jp	
KATO, Ryuichi	LS	ryuichi.kato@kek.jp	
KAWASAKI, Masato	LS	kawasaki@pfweis.kek.jp	
KAWATA, Hiroshi	DF	hiroshi.kawata@kek.jp	
KIKEGAWA, Takumi	SMS	takumi.kikegawa@kek.jp	
KIKUCHI, Takashi	BETSS	takashi.kikuchi@kek.jp	
KISHIMOTO, Shunji	BETSS (DF)	syunji.kishimoto@kek.jp	
KITAJIMA, Yoshinori	BETSS (ES)	yoshinori.kitajima@kek.jp	
KOBAYASHI, Katsumi	USD (LS)	katsumi.kobayashi@kek.jp	~Mar. 31, 2010
KOIDE, Tsuneharu	ES	tsuneharu.koide@kek.jp	
KOSUGE, Takashi	BETSS	takashi.kosuge@kek.jp	
KOYAMA, Atsushi	BETSS	atsushi.koyama@kek.jp	
KUBOTA, Masato	ES	masato.kubota@kek.jp	
MAEZAWA, Hideki	BETSS	hideki.maezawa@kek.jp	
MASE, Kazuhiko	ES	kazuhiko.mase@kek.jp	
MATSUGAKI, Naohiro	LS	naohiro.matsugaki@kek.jp	
MORI, Takeharu	BETSS	takeharu.mori@kek.jp	
MURAKAMI, Youichi	SMS	youichi.murakami@kek.jp	April 1 2009~
NAKAO, Akiko	SMS	akiko.nakao@kek.jp	
NAKAO, Hironori	SMS	hironori.nakao@kek.jp	
NASU, Keiichiro	ES	keiichiro.nasu@kek.jp	~Mar. 31, 2010
NIGORIKAWA, Kazuyuki	BETSS	kazuyuki.nigorikawa@kek.jp	
NITANI, Hiroaki	MC	hiroaki.nitani@kek.jp	April 1 2009~
NIWA, Yasuhiro	MC (BETSS)	yasuhiro.niwa@kek.jp	Oct. 1 2009~
NOMURA, Masaharu	MC	masaharu.nomura@kek.jp	
NOZAWA, Shunsuke	DF	noz@post.kek.jp	April 1 2009~
OKAMOTO, Jun	SMS	jun.okamoto@kek.jp	April 1 2009~
ONO, Kanta	ES	kanta.ono@kek.jp	
SAITO, Yuuki	BETSS	yuuki.saito@kek.jp	
SAKAMAKI, Masako	ES	masakos@post.kek.jp	Oct. 1 2009~
SUGIYAMA, Hiroshi	BETSS (DF)	hiroshi.sugiyama@kek.jp	
TANAKA, Hirokazu	BETSS	hirokazu.tanaka@kek.jp	April 1 2009~
TOYOSHIMA, Akio	BETSS	akio.toyoshima@kek.jp	
UCHIDA, Yoshinori	BETSS	yoshinori.uchida@kek.jp	
USAMI, Noriko	USD (LS)	noriko.usami@kek.jp	
YAGISHITA, Akira	ES	akira.yagishita@kek.jp	

Name	Group*	e-mail address	
YAMADA, Yusuke	LS	yama@post.kek.jp	
YAMAMOTO, Shigeru	BETSS	shigeru.yamamoto@kek.jp	
YAMASAKI, Yuichi	SMS	yuichi.yamasaki@kek.jp	Oct. 1 2009~
ZHANG, Xiaowei	DF	zhang.xiaowei@kek.jp	
<hr/>			
Accelerator Division VII			
AOTO, Tomohiro	Light Source I	tomohiro.aoto@kek.jp	
ASAOKA, Seiji	Light Source III	seiji.asaoka@kek.jp	
HAGA, Kaiichi	Light Source IV	kaiichi.haga@kek.jp	
HARADA, Kentaro	Light Source I	kentaro.harada@kek.jp	
HONDA, Tohru	Light Source III	tohru.honda@kek.jp	
HONDA, Yosuke	Light Source VI	yosuke@post.kek.jp	April 1 2009~
ISAWA, Masaaki	Light Source II	isawa@post.kek.jp	
KASUGA, Toshio	Light Source VI		~Mar. 31, 2010
KOBAYASHI, Yukinori	Light Source I	yukinori.kobayashi@kek.jp	
MISHINA, Atsushi	Light Source V	Atsushi.MISHINA@kek.jp	
MIYAJIMA, Tsukasa	Light Source VI	tsukasa.miyajima@kek.jp	
MIYAUCHI, Hiroshi	Light Source V	hiroshi.miyauchi@kek.jp	
NAGAHASHI, Shinya	Light Source V	shinya.nagahashi@kek.jp	
NOGAMI, Takashi	Light Source III	takashi.nogami@kek.jp	
OBINA, Takashi	Light Source IV	takashi.obina@kek.jp	
OZAKI, Toshiyuki	Light Source I	ozaki@post.kek.jp	April 1 2009~
PAK, Cheol On	Light Source IV	cheol-on.pak@kek.jp	
SAKAI, Hiroshi	Light Source III	sakai.hiroshi@kek.jp	June 1 2009~
SAKANAKA, Shogo	Light Source II	shogo.sakanaka@kek.jp	
SASAKI, Hiroyuki	Light Source III	hiroyuki.sasaki@kek.jp	
SATO, Kotaro	Light Source VI	kotaro.satoh@kek.jp	April 1 2009~
SATO, Yoshihiro	Light Source V	yoshihiro.sato@kek.jp	
SHIOYA, Tatsuro	Light Source I	tatsuro.shioya@kek.jp	
TADANO, Mikito	Light Source IV	mikito.tadano@kek.jp	
TAHARA, Toshihiro	Light Source III	ttahara@post.kek.jp	
TAKAHASHI, Takeshi	Light Source II	takeshi.takahashi@kek.jp	
TAKAI, Ryota	Light Source IV	ryota.takai@kek.jp	
TANIMOTO, Yasunori	Light Source III	yasunori.tanimoto@kek.jp	
TSUCHIYA, Kimichika	Light Source I	kimichika.tsuchiya@kek.jp	
UCHIYAMA, Takashi	Light Source VI	takashi.uchiyama@kek.jp	
UEDA, Akira	Light Source I	akira.ueda@kek.jp	
UMEMORI, Kensei	Light Source II	kensei.umemori@kek.jp	
YAMAMOTO, Masahiro	Light Source II	masahiro@post.kek.jp	April 1 2009~

Guest Professor

ASAKURA, Kiyotaka	(Hokkaido Univ.)
HAJIMA, Ryoichi	(JAEA)
HYODO, Toshio	(The Univ. of Tokyo)
INADA, Yasuhiro	(Ritsumeikan Univ.)
ISHIHARA, Sumio	(Tohoku Univ.)
KATO, Masahiro	(IMS)
KONDO, Tadashi	(Osaka Univ.)
KOSHIHARA, Shinya	(Tokyo Inst. Tech.)
NODA, Yukio	(Tohoku Univ.)
OHKUMA, Haruo	(JASRI/SPring-8)
YOSHINOBU, Jun	(The Univ. of Tokyo)

Name	Group*	e-mail address	
Postdoctoral Fellow			
SHIMADA, Miho		miho.shimada@kek.jp	~Mar. 31, 2010
SUMII, Ryohei			
SATO, Tokushi		tosato@post.kek.jp	April 1 2009~
IKEUCHI, Kazuhiko		kazuhiko.ikeuchi@kek.jp	April 1 2009~
OKAZAKI, Seiji		okazakis@post.kek.jp	April 1 2009~

The Graduate University for Advanced Studies

KOTANI, Yoshinori
 NAKAMURA, Kensuke
 OHKUBO, Ken
 WU, Yanlin
 ROHAIM, Ahmed
 MABIED, Ahmed

* Synchrotron Radiation Science Division

ES Electronic Structure
 SMS Structural Material Science
 MC Materials Chemistry
 LS Life Sciences
 DF Development in Future SRR
 BETSS Beamline Engineering, Technical Services and Safety
 USD User Support and Dissemination
 SP Slow Positron
 Italic: the additional post