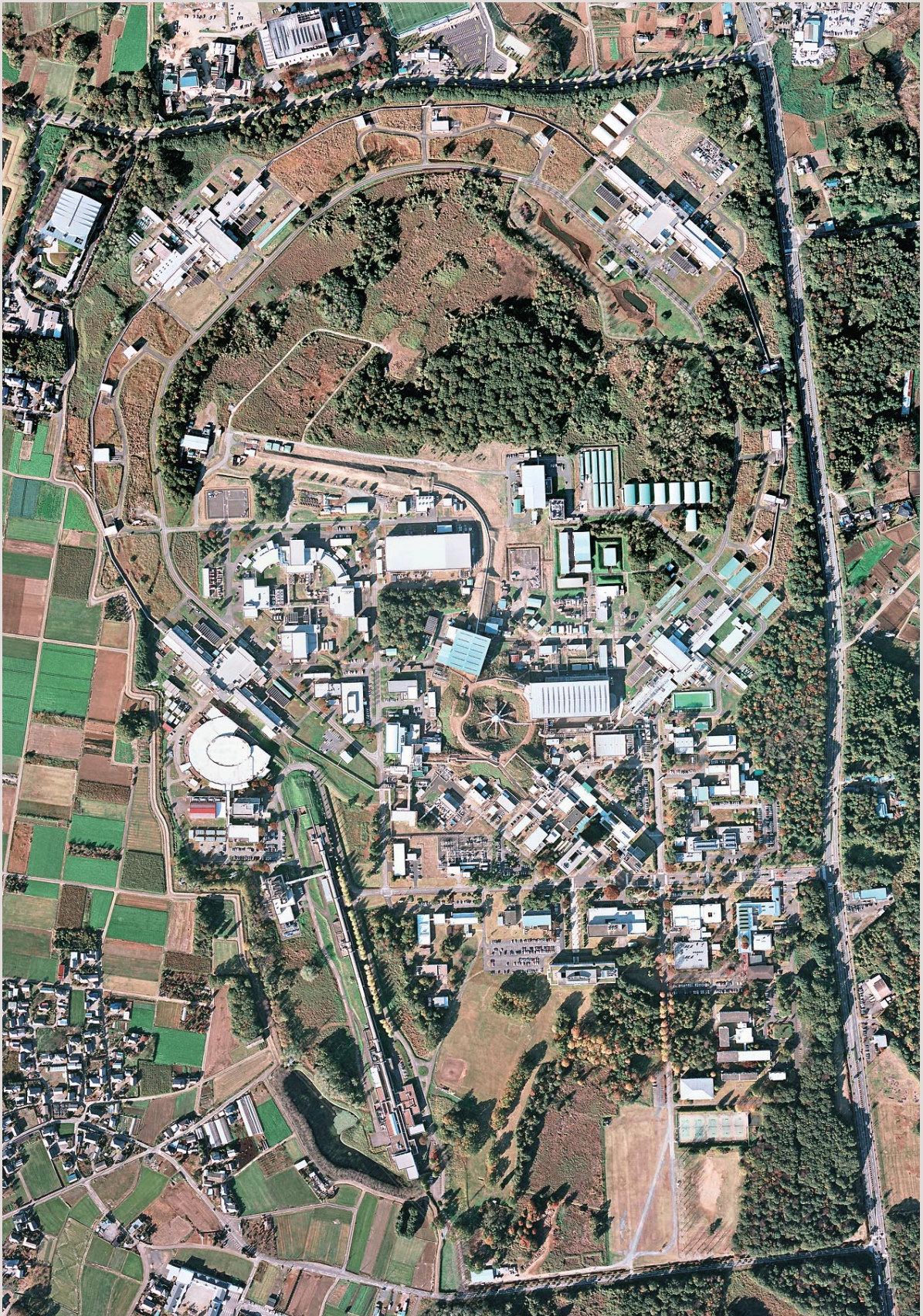
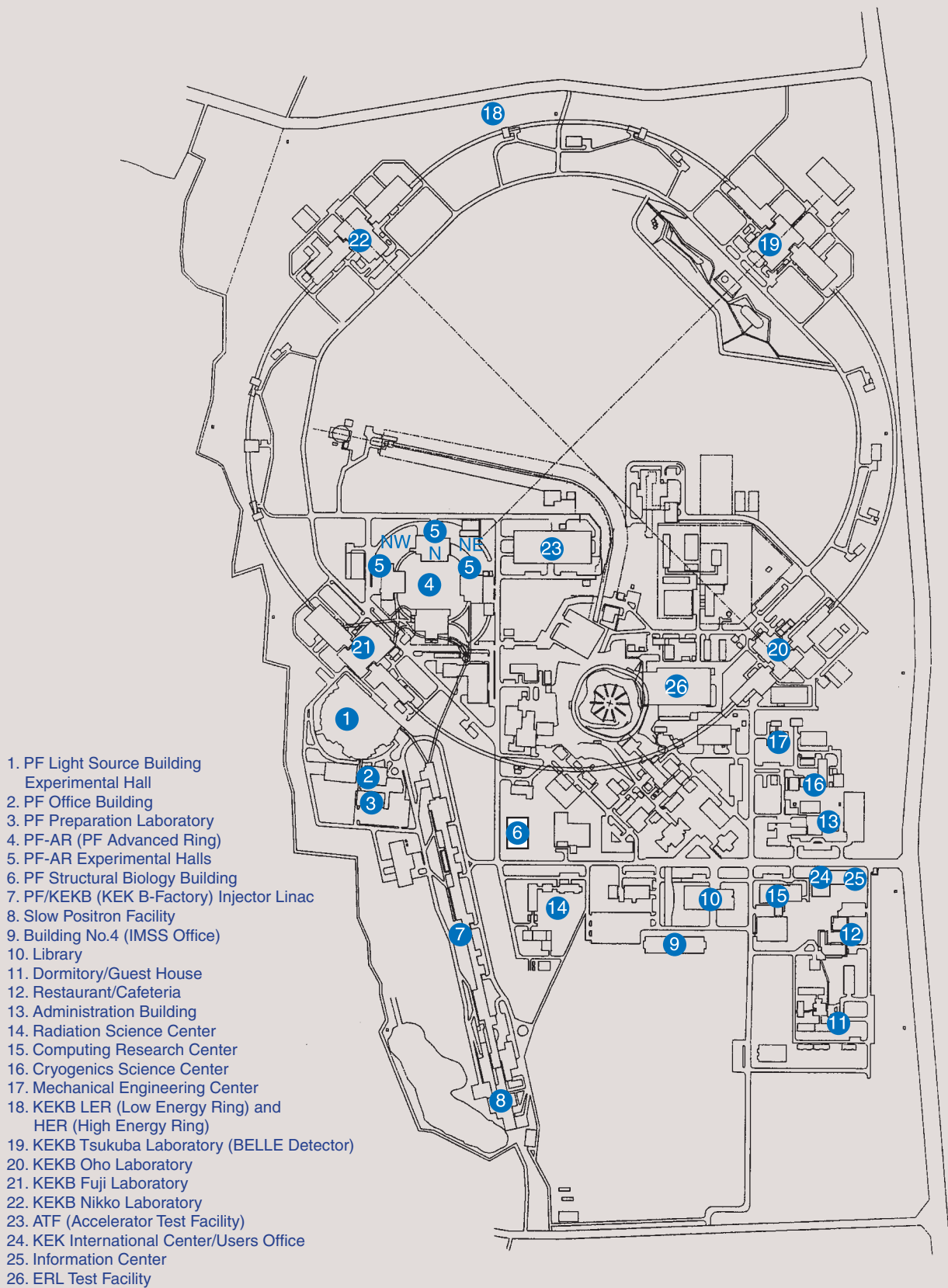


1. Site and Organization





1. PF Light Source Building
Experimental Hall
2. PF Office Building
3. PF Preparation Laboratory
4. PF-AR (PF Advanced Ring)
5. PF-AR Experimental Halls
6. PF Structural Biology Building
7. PF/KEKB (KEK B-Factory) Injector Linac
8. Slow Positron Facility
9. Building No.4 (IMSS Office)
10. Library
11. Dormitory/Guest House
12. Restaurant/Cafeteria
13. Administration Building
14. Radiation Science Center
15. Computing Research Center
16. Cryogenics Science Center
17. Mechanical Engineering Center
18. KEKB LER (Low Energy Ring) and
HER (High Energy Ring)
19. KEKB Tsukuba Laboratory (BELLE Detector)
20. KEKB Oho Laboratory
21. KEKB Fuji Laboratory
22. KEKB Nikko Laboratory
23. ATF (Accelerator Test Facility)
24. KEK International Center/Users Office
25. Information Center
26. ERL Test Facility

KEK consists of four research institutions, i.e., the Institute of Materials Structure Science (IMSS), the Institute of Particle and Nuclear Studies (IPNS), the Accelerator Laboratory (AL), and the Applied Research Laboratory. As shown in Fig. 1, the IMSS constitutes the Synchrotron Radiation Divisions I and II, the Neutron Science Division, the Muon Science Division, the Structural Biology Research Center, and the Condensed Matter Research Center. Table I shows a list of the members of the Advisory Committee of the IMSS.

Photon Factory (PF) consists of two divisions of the IMSS (the Synchrotron Radiation Divisions I and II) and the Accelerator Division VII of the AL as shown in the organization chart of Fig. 2. The staff members

of the PF list in Table 2. Synchrotron Radiation Science Divisions I and II consist of seven groups such as “Electronic Structure”, “Structural Material Science”, “Materials Chemistry”, “Life Sciences”, “Beamline Engineering, Technical Services & Safety”, “User Support and Dissemination”. The Accelerator Division VII has six groups, which are named Light Source Group I to VI. The missions of each group are as follows: Group I is in charge of orbits, magnets, and insertion devices, Group II of RF, SC cavities and so on, Group III mainly of vacuum, Group IV mainly of beam diagnostics and accelerator control, Group V of front-end, safety and so on, and Group VI mainly of electron guns.

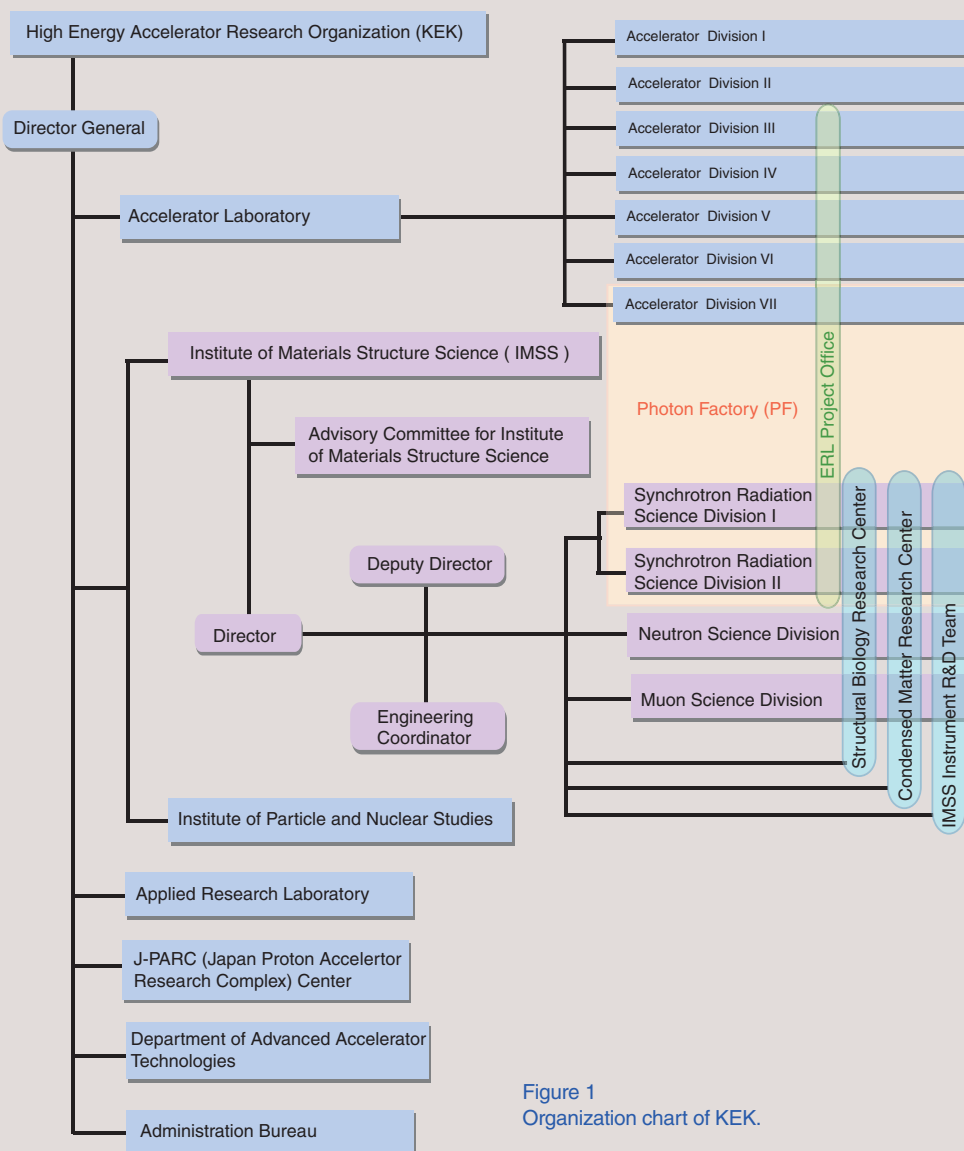


Figure 1 Organization chart of KEK.

Table 1 The members of the Advisory Committee for Institute of Materials Structure Science.

AKIMITSU, Jun	Aoyama Gakuin University
ASAKURA, Kiyotaka	Hokkaido University, CRC
BAN, Shuichi	Applied Research Laboratory, KEK
ENOMOTO, Atsushi	Accelerator Laboratory, KEK
FUJII, Yasuhiko	Comprehensive Research Organization for Science and Society
IKEDA, Susumu*	Neutron Science Division, IMSS, KEK
ITO, Kenji	Photon Factory, IMSS, KEK
KADONO, Ryosuke	Muon Science Division, IMSS, KEK
KAWATA, Hiroshi	Photon Factory, IMSS, KEK
KISHIMOTO, Shunji	Photon Factory, IMSS, KEK
KOBAYASHI, Yukinori	Photon Factory, Accelerator Laboratory, KEK
MIKI, Kunio	Kyoto University
MIYAKE, Yasuhiro	Muon Science Division, IMSS, KEK
MURAKAMI, Youichi	Photon Factory, IMSS, KEK
NOMURA, Masaharu	Photon Factory, IMSS, KEK
OSHIMA, Masaharu	The University of Tokyo
SAITO, Naohito	Institute of Particle and Nuclear Studies, KEK
SAKATA, Makoto**	Nagoya University
SETO, Hideki	Neutron Science Division, IMSS, KEK
SHIBAYAMA, Mitsuhiro	ISSP, The University of Tokyo
TAKATA, Masaki	RIKEN/SPring-8
TORIKAI, Eiko	University of Yamanashi
WAKATSUKI, Soichi	Photon Factory, IMSS, KEK
YAMADA, Kazuyoshi	Tohoku University, WPI-AIMR

* Chairperson ** Vice-Chairperson

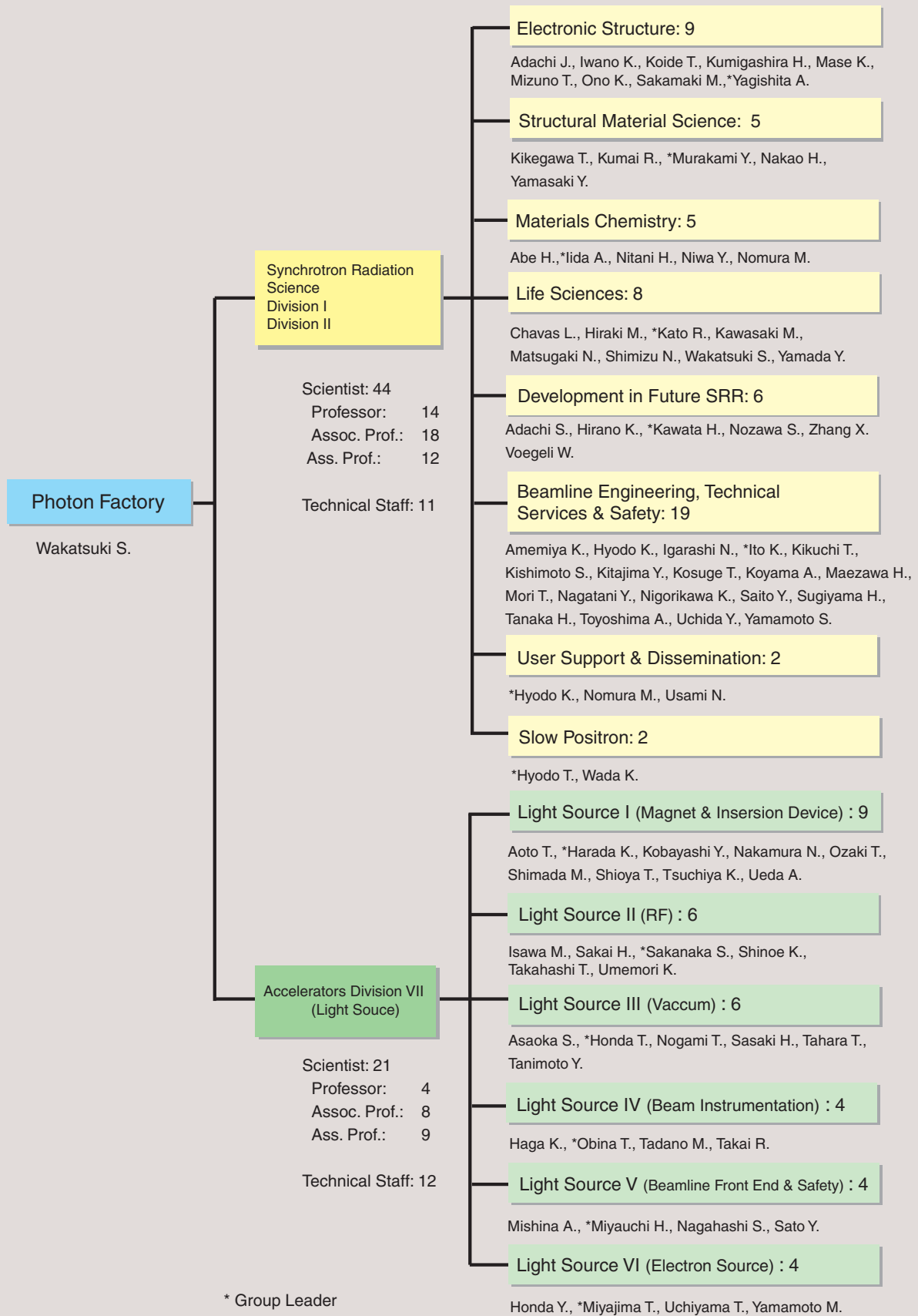


Figure 2
Organization chart of PF (as of March 31, 2012) .

Table 2 Staff members of the Photon Factory.

Name	Group [§]	e-mail address
Research Staff		
Director		
WAKATSUKI, Soichi	LS	soichi.wakatsuki*kek.jp
Synchrotron Radiation Science Division I & II		
ABE, Hitoshi	MC	hitoshi.abe*kek.jp
ADACHI, Jun-ichi	ES	jun-ichi.adachi*kek.jp
ADACHI, Shinichi	DF (SMS)	shinichi.adachi*kek.jp
AMEMIYA, Kenta	BETSS (ES)	kenta.amemiya*kek.jp
CHAVAS, Leonard	LS	leonard.chavas*kek.jp
HIRAKI, Masahiko	LS	masahiko.hiraki*kek.jp
HIRANO, Keiichi	DF	keiichi.hirano*kek.jp
HYODO, Kazuyuki	BETSS (USD)	kazuyuki.hyodo*kek.jp
HYODO, Toshio	SPF	toshio.hyodo*kek.jp
IGARASHI, Noriyuki	BETSS (LS)	noriyuki.igarashi*kek.jp
IIDA, Atsuo	MC	atsuo.iida*kek.jp
ITO, Kenji	BETSS (ES)	kenji.ito*kek.jp
IWANO, Kaoru	ES (DF)	kaoru.iwano*kek.jp
KATO, Ryuichi	LS	ryuichi.kato*kek.jp
KAWASAKI, Masato	LS	kawasaki*pfweis.kek.jp
KAWATA, Hiroshi	DF	hiroshi.kawata*kek.jp
KIKEGAWA, Takumi	SMS	takumi.kikegawa*kek.jp
KIKUCHI, Takashi	BETSS	takashi.kikuchi*kek.jp
KISHIMOTO, Shunji	BETSS (DF)	syunji.kishimoto*kek.jp
KITAJIMA, Yoshinori	BETSS (ES)	yoshinori.kitajima*kek.jp
KOIDE, Tsuneharu	ES	tsuneharu.koide*kek.jp
KOSUGE, Takashi	BETSS	takashi.kosuge*kek.jp
KOYAMA, Atsushi	BETSS	atsushi.koyama*kek.jp
KUMAI, Reiji	SMS	reiji.kumai*kek.jp
KUMIGASHIRA, Hiroshi	ES	hiroshi.kumigashira*kek.jp
MAEZAWA, Hideki	BETSS	hideki.maezawa*kek.jp
MASE, Kazuhiko	ES	kazuhiko.mase*kek.jp
MATSUGAKI, Naohiro	LS	naohiro.matsugaki*kek.jp
MIZUNO, Tomoya	ES	tmizuno*post.kek.jp
MORI, Takeharu	BETSS	takeharu.mori*kek.jp
MURAKAMI, Youichi	SMS	youichi.murakami*kek.jp
NAGATANI, Yasuko	BETSS	yasukon*post.kek.jp
NAKAO, Hironori	SMS	hironori.nakao*kek.jp
NIGORIKAWA, Kazuyuki	BETSS	kazuyuki.nigorikawa*kek.jp
NITANI, Hiroaki	MC	hiroaki.nitani*kek.jp
NIWA, Yasuhiro	MC (BETSS)	yasuhiro.niwa*kek.jp
NOMURA, Masaharu	MC	masaharu.nomura*kek.jp
NOZAWA, Shunsuke	DF	noz*post.kek.jp
ONO, Kanta	ES	kanta.ono*kek.jp
SAITO, Yuuki	BETSS	yuuki.saito*kek.jp
SAKAMAKI, Masako	ES	masakos*post.kek.jp
SHIMIZU, Nobutaka	LS	nobutaka.shimizu*kek.jp
SUGIYAMA, Hiroshi	BETSS (DF)	hiroshi.sugiyama*kek.jp

Name	Group ^s	e-mail address
TANAKA, Hirokazu	BETSS	hirokazu.tanaka*kek.jp
TOYOSHIMA, Akio	BETSS	akio.toyoshima*kek.jp
UCHIDA, Yoshinori	BETSS	yoshinori.uchida*kek.jp
USAMI, Noriko	USD (LS)	noriko.usami*kek.jp
VOEGELI, Wolfgang	DF	wolfgang.voegeli*kek.jp
WADA, Ken	SPF	ken.wada*kek.jp
YAGISHITA, Akira	ES	akira.yagishita*kek.jp
YAMADA, Yusuke	LS	yama*post.kek.jp
YAMAMOTO, Shigeru	BETSS	shigeru.yamamoto*kek.jp
YAMASAKI, Yuichi	SMS	yuichi.yamasaki*kek.jp
ZHANG, Xiaowei	DF	zhang.xiaowei*kek.jp
Accelerator Division VII		
AOTO, Tomohiro	Light Source I	tomohiro.aoto*kek.jp
ASAOKA, Seiji	Light Source III	seiji.asaoka*kek.jp
HAGA, Kaiichi	Light Source IV	kaiichi.haga*kek.jp
HARADA, Kentaro	Light Source I	kentaro.harada*kek.jp
HONDA, Tohru	Light Source III	tohru.honda*kek.jp
HONDA, Yosuke	Light Source VI	yosuke*post.kek.jp
ISAWA, Masaaki	Light Source II	isawa*post.kek.jp
KOBAYASHI, Yukinori	Light Source I	yukinori.kobayashi*kek.jp
MISHINA, Atsushi	Light Source V	
MIYAJIMA, Tsukasa	Light Source VI	tsukasa.miyajima*kek.jp
MIYAUCHI, Hiroshi	Light Source V	hiroshi.miyauchi*kek.jp
NAGAHASHI, Shinya	Light Source V	shinya.nagahashi*kek.jp
NAKAMURA, Norio	Light Source I	norio.nakamura*kek.jp
NOGAMI, Takashi	Light Source III	takashi.nogami*kek.jp
OBINA, Takashi	Light Source IV	takashi.obina*kek.jp
OZAKI, Toshiyuki	Light Source I	ozaki*post.kek.jp
SAKAI, Hiroshi	Light Source III	sakai.hiroshi*kek.jp
SAKANAKA, Shogo	Light Source II	shogo.sakanaka*kek.jp
SASAKI, Hiroyuki	Light Source III	hiroyuki.sasaki*kek.jp
SATO, Yoshihiro	Light Source V	yoshihiro.sato*kek.jp
SHIMADA, Miho	Light Source I	miho.shimada*kek.jp
SHINOE, Kenji	Light Source II	kenji.shinoe*kek.jp
SHIOYA, Tatsuro	Light Source I	tatsuro.shioya*kek.jp
TADANO, Mikito	Light Source IV	mikito.tadano*kek.jp
TAHARA, Toshihiro	Light Source III	ttahara*post.kek.jp
TAKAHASHI, Takeshi	Light Source II	takeshi.takahashi*kek.jp
TAKAI, Ryota	Light Source IV	ryota.takai*kek.jp
TANIMOTO, Yasunori	Light Source III	yasunori.tanimoto*kek.jp
TSUCHIYA, Kimichika	Light Source I	kimichika.tsuchiya*kek.jp
UCHIYAMA, Takashi	Light Source VI	takashi.uchiyama*kek.jp
UEDA, Akira	Light Source I	akira.ueda*kek.jp
UMEMORI, Kensei	Light Source II	kensei.umemori*kek.jp
YAMAMOTO, Masahiro	Light Source VI	masahiro*post.kek.jp

Name	Group [§]	e-mail address
Guest Professor		
ASAKURA, Kiyotaka	(Hokkaido Univ.)	
HAJIMA, Ryoichi	(JAEA)	
ISHIHARA, Sumio	(Tohoku Univ.)	
KATO, Masahiro	(IMS)	
KONDO, Tadashi	(Osaka Univ.)	
KOSHIHARA, Shinya	(Tokyo Inst. Tech.)	
MORITOMO, Yutaka	(Tsukuba Univ.)	
NAKAGAWA, Atsushi	(Osaka Univ.)	
NAMIKAWA, Kazumichi	(Tokyo Univ. of Sci.)	
NODA, Yukio	(Tohoku Univ.)	
OHKUMA, Haruo	(JASRI/SPring-8)	

Postdoctoral Fellow

OKAZAKI, Seiji	okazakis*post.kek.jp
SATO, Tokushi	tosato*post.kek.jp
SUDAYAMA, Takaaki	takaaki.sudayama*kek.jp
YONEMURA, Hiroki	Hiroki.yonemura*kek.jp

The Graduate University for Advanced Studies

MATSUI, Takuto
 NAKAMURA, Kensuke
 OHKUBO, Ken
 WU, Yanlin
 MABIED, Ahmed

[§] Synchrotron Radiation Science Division

ES	Electronic Structure
SMS	Structural Material Science
MC	Materials Chemistry
LS	Life Sciences
DF	Development in Future SRR
BETSS	Beamline Engineering, Technical Services and Safety
USD	User Support and Dissemination
SP	Slow Positron

Italic: the additional post