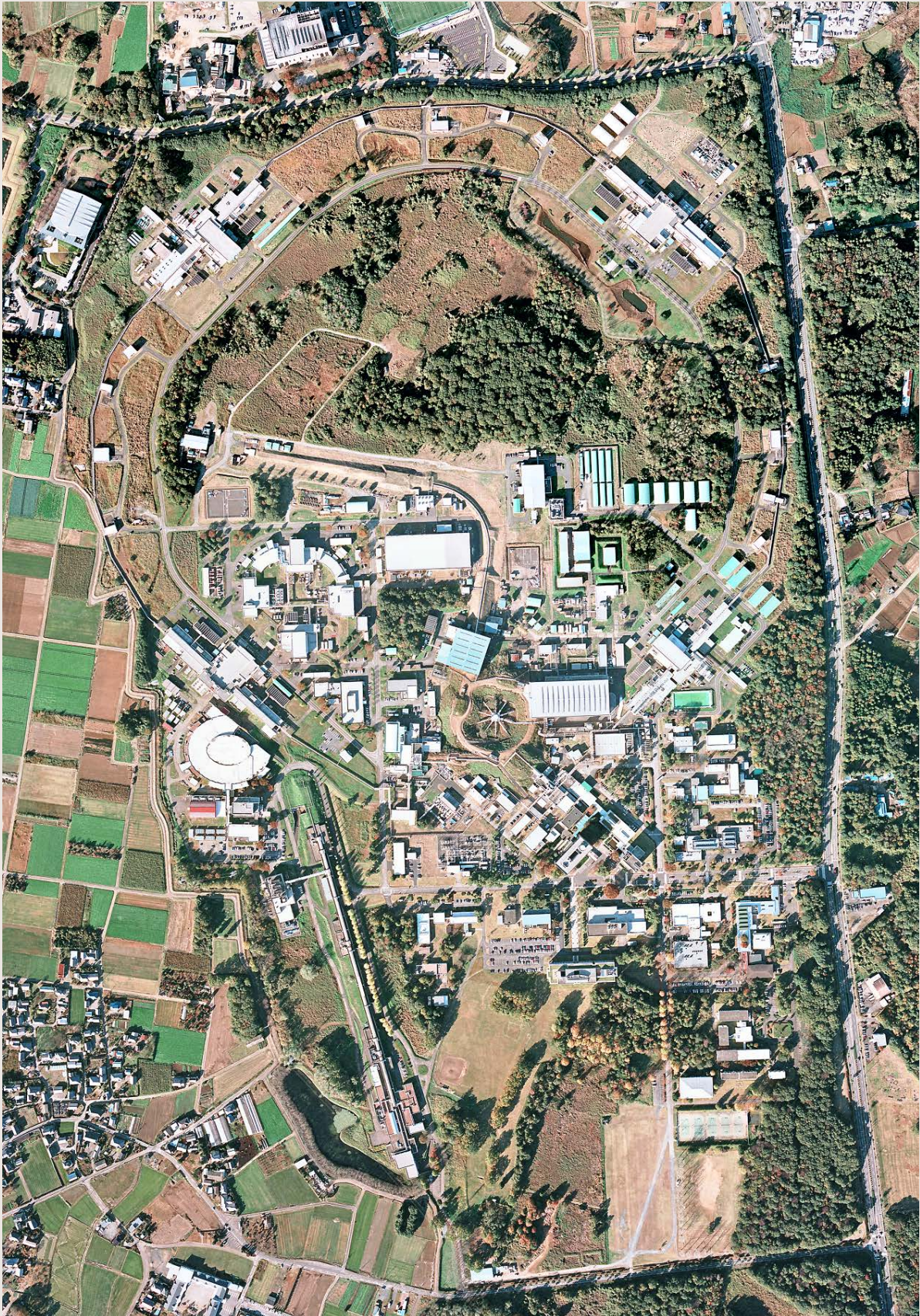
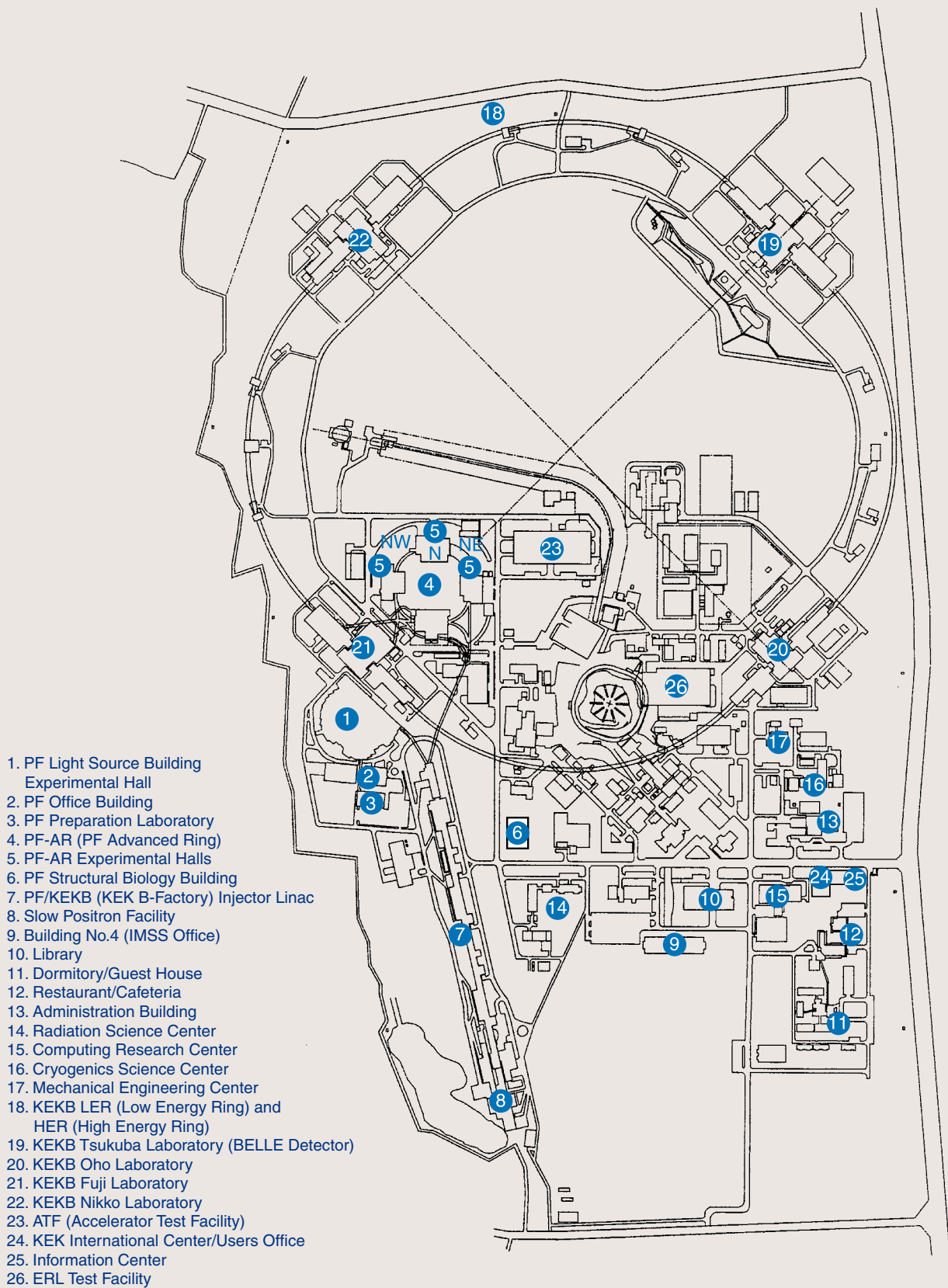


# 1. Site and Organization





KEK consists of four research institutions, i.e., the Institute of Materials Structure Science (IMSS), the Institute of Particle and Nuclear Studies (IPNS), the Accelerator Laboratory (AL), and the Applied Research Laboratory. As shown in Fig. 1, the IMSS constitutes the Synchrotron Radiation Divisions I and II, the Neutron Science Division, the Muon Science Division, the Structural Biology Research Center, and the Condensed Matter Research Center. Table I shows a list of the members of the Advisory Committee of the IMSS.

Photon Factory (PF) consists of two divisions of the IMSS (the Synchrotron Radiation Divisions I and II) and the Accelerator Division VII of the AL as shown in the organization chart of Fig. 2. The staff members

of the PF list in Table 2. Synchrotron Radiation Science Divisions I and II consist of seven groups such as “Electronic Structure”, “Structural Material Science”, “Materials Chemistry”, “Life Sciences”, “Beamline Engineering, Technical Services & Safety”, “User Support and Dissemination”. The Accelerator Division VII has six groups, which are named Light Source Group I to VI. The missions of each group are as follows: Group I is in charge of orbits, magnets, and insertion devices, Group II of RF, SC cavities and so on, Group III mainly of vacuum, Group IV mainly of beam diagnostics and accelerator control, Group V of front-end, safety and so on, and Group VI mainly of electron guns.

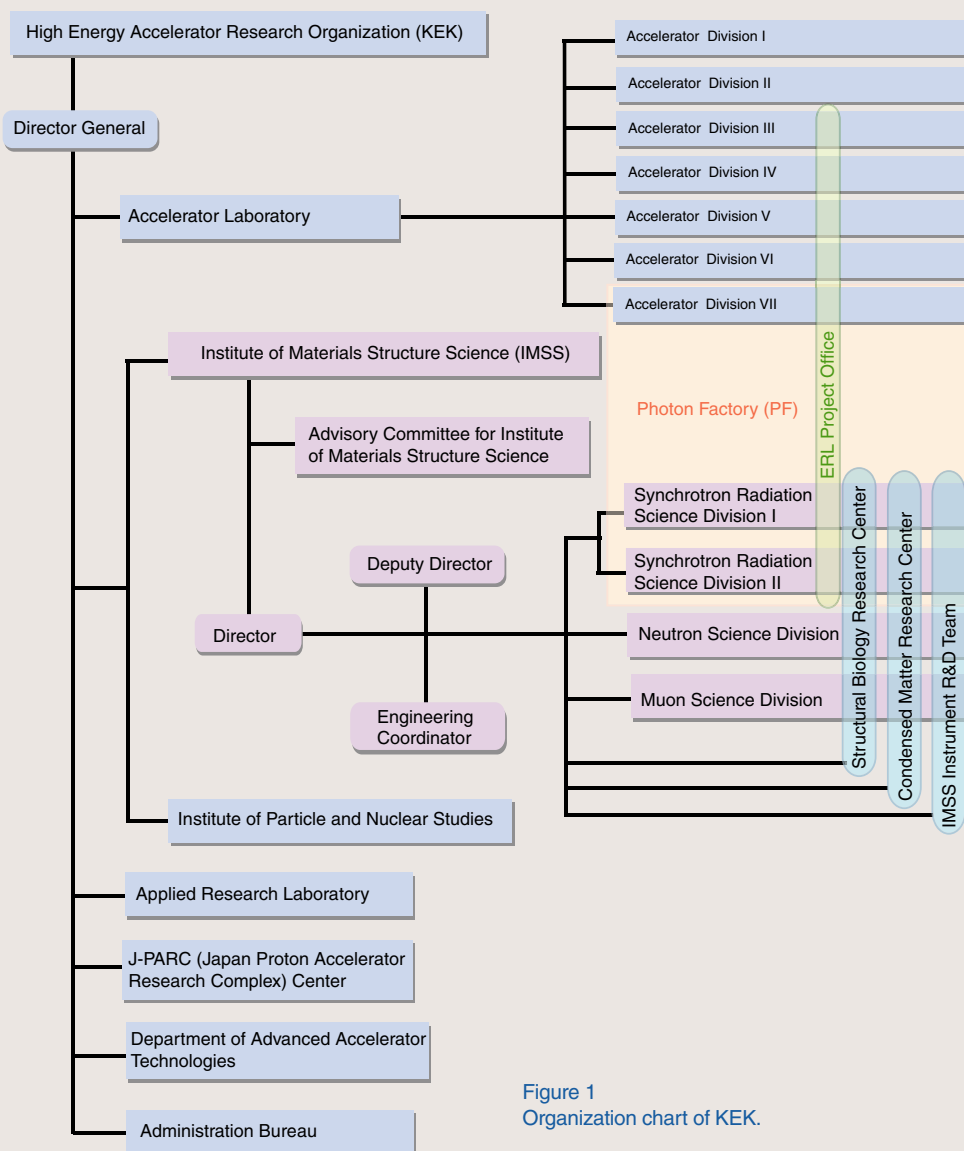


Figure 1 Organization chart of KEK.

Table 1 The members of the Advisory Committee for Institute of Materials Structure Science.

|                      |   |
|----------------------|---|
| ADACHI, Shin-ichi    | Photon Factory, IMSS, KEK                                   |
| AKIMITSU, Jun        | Aoyama Gakuin University                                    |
| AMEMIYA, Yoshiyuki** | The University of Tokyo                                     |
| FUJII, Yasuhiko      | Comprehensive Research Organization for Science and Society |
| ITO, Kenji           | Photon Factory, IMSS, KEK                                   |
| KADONO, Ryosuke      | Muon Science Division, IMSS, KEK                            |
| KANAYA, Toshiji      | Kyoto University  |
| KATAOKA, Mikio       | Nara Institute of Science and Technology                    |
| KAWATA, Hiroshi      | Photon Factory, IMSS, KEK                                   |
| KOBAYASHI, Yukinori  | Photon Factory, Accelerator Laboratory, KEK                 |
| KUMIGASHIRA, Hiroshi | Photon Factory, IMSS, KEK                                   |
| MIYAKE, Yasuhiro     | Muon Science Division, IMSS, KEK                            |
| MIZUKI, Jun'ichiro   | Kwansei Gakuin University                                   |
| MURAKAMI, Youichi    | Photon Factory, IMSS, KEK                                   |
| OSHIMA, Masaharu     | The University of Tokyo                                     |
| OTOMO, Toshiya       | Neutron Science Division, IMSS, KEK                         |
| SAITO, Naohito       | Institute of Particle and Nuclear Studies, KEK              |
| SASAKI, Shinichi     | Applied Research Laboratory, KEK                            |
| SATO, Mamoru         | Yokohama City University                                    |
| SETO, Hideki*        | Neutron Science Division, IMSS, KEK                         |
| TAKATA, Masaki       | RIKEN/SPring-8  |
| TORIKAI, Eiko        | University of Yamanashi                                     |
| WAKATSUKI, Soichi    | Photon Factory, IMSS, KEK                                   |
| YAMAGUCHI, Seiya     | Accelerator Laboratory, KEK                                 |

\* Chairperson \*\* Vice-Chairperson

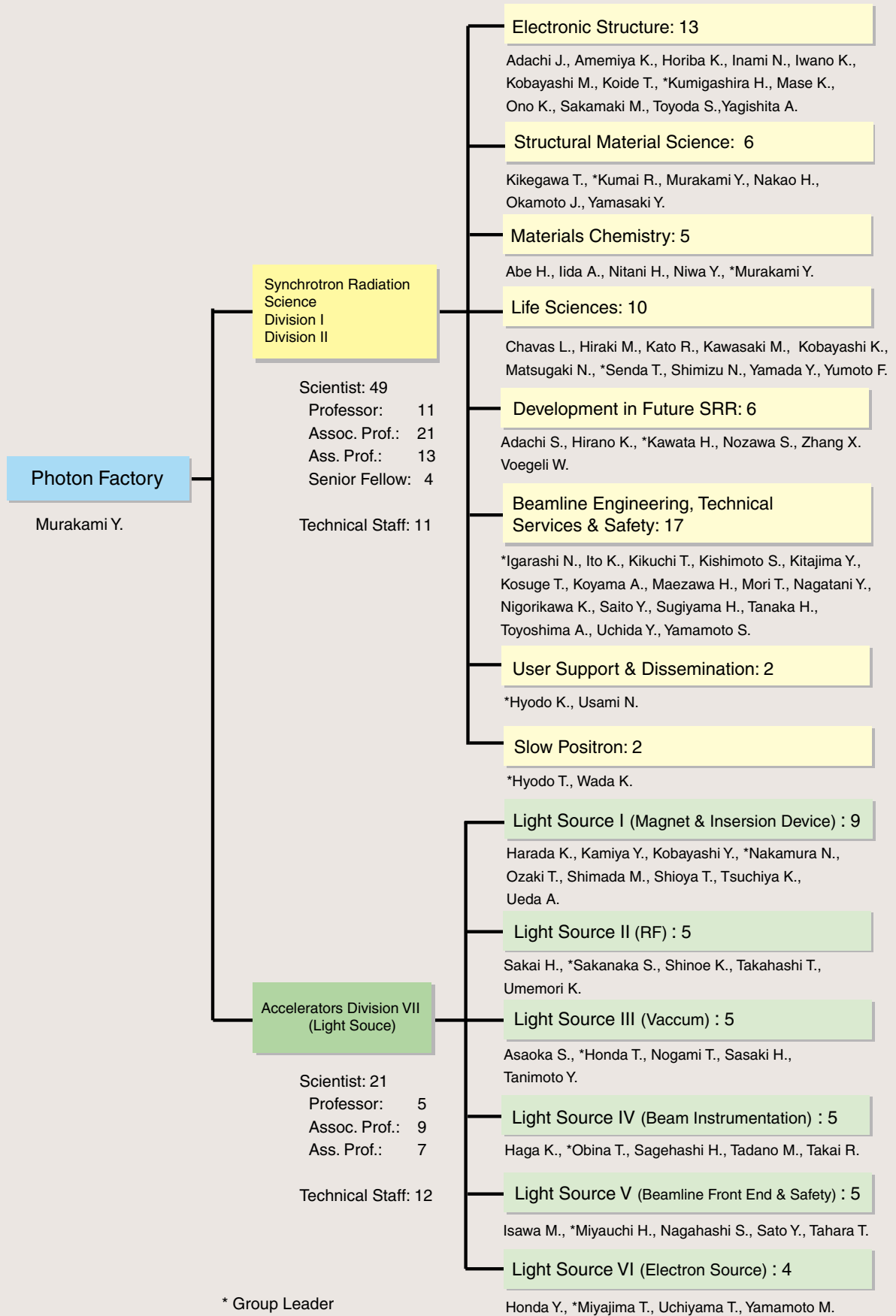


Figure 2  
Organization chart of PF (as of March 31, 2013) .

Table 2 Staff members of the Photon Factory.

| Name  | Group*      |
|---|-------------|
| <b>Research Staff</b>                         |             |
| <b>Director</b>                               |             |
| MURAKAMI, Youichi                             | SMS/MC      |
| Synchrotron Radiation Science Division I & II |             |
| ABE, Hitoshi                                  | MC          |
| ADACHI, Jun-ichi                              | ES          |
| ADACHI, Shinichi                              | DF (SMS)    |
| AMEMIYA, Kenta                                | ES (BETSS)  |
| CHAVAS, Leonard                               | LS          |
| HIRAKI, Masahiko                              | LS (BETSS)  |
| HIRANO, Keichi                                | DF          |
| HORIBA, Koji                                  | ES          |
| HYODO, Kazuyuki                               | USD (BETSS) |
| HYODO, Toshio                                 | SPF         |
| IGARASHI, Noriyuki                            | BETSS (LS)  |
| IIDA, Atsuo                                   | MC          |
| INAMI, Nobuhito                               | ES          |
| ITO, Kenji                                    | BETSS (ES)  |
| IWANO, Kaoru                                  | ES (DF)     |
| KATO, Ryuichi                                 | LS          |
| KAWASAKI, Masato                              | LS          |
| KAWATA, Hiroshi                               | DF          |
| KIKEGAWA, Takumi                              | SMS         |
| KIKUCHI, Takashi                              | BETSS       |
| KISHIMOTO, Shunji                             | BETSS (DF)  |
| KITAJIMA, Yoshinori                           | BETSS (ES)  |
| KOBAYASHI, Katsumi                            | LS          |
| KOBAYASHI, Masaki                             | ES          |
| KOIDE, Tsuneharu                              | ES          |
| KOSUGE, Takashi                               | BETSS       |
| KOYAMA, Atsushi                               | BETSS       |
| KUMAI, Reiji                                  | SMS         |
| KUMIGASHIRA, Hiroshi                          | ES          |
| MAEZAWA, Hideki                               | BETSS       |
| MASE, Kazuhiko                                | ES          |
| MATSUGAKI, Naohiro                            | LS          |
| MORI, Takeharu                                | BETSS       |
| NAGATANI, Yasuko                              | BETSS       |
| NAKAO, Hironori                               | SMS         |
| NIGORIKAWA, Kazuyuki                          | BETSS       |
| NITANI, Hiroaki                               | MC          |
| NIWA, Yasuhiro                                | MC (BETSS)  |
| NOZAWA, Shunsuke                              | DF          |
| OKAMOTO, Jun                                  | SMS         |
| ONO, Kanta                                    | ES          |
| SAITO, Yuuki                                  | BETSS       |
| SAKAMAKI, Masako                              | ES          |

| Name              | Group*     |
|-------------------|------------|
| SENDA, Toshiya    | LS         |
| SHIMIZU, Nobutaka | LS         |
| SUGIYAMA, Hiroshi | BETSS (DF) |
| TANAKA, Hirokazu  | BETSS      |
| TOYODA, Satoshi   | ES         |
| TOYOSHIMA, Akio   | BETSS      |
| UCHIDA, Yoshinori | BETSS      |
| USAMI, Noriko     | USD (LS)   |
| VOEGELI, Wolfgang | DF         |
| WADA, Ken         | SPF        |
| YAGISHITA, Akira  | ES         |
| YAMADA, Yusuke    | LS         |
| YAMAMOTO, Shigeru | BETSS      |
| YAMASAKI, Yuichi  | SMS        |
| YUMOTO, Fumiaki   | LS         |
| ZHANG, Xiaowei    | DF         |

---

 Accelerator Division VII

|                     |                  |
|---------------------|------------------|
| ASAOKA, Seiji       | Light Source III |
| HAGA, Kaiichi       | Light Source IV  |
| HARADA, Kentaro     | Light Source I   |
| HONDA, Tohru        | Light Source III |
| HONDA, Yosuke       | Light Source VI  |
| ISAWA, Masaaki      | Light Source II  |
| KAMIYA, Yukihide    | Light Source I   |
| KOBAYASHI, Yukinori | Light Source I   |
| MIYAJIMA, Tsukasa   | Light Source VI  |
| MIYAUCHI, Hiroshi   | Light Source V   |
| NAGAHASHI, Shinya   | Light Source V   |
| NAKAMURA, Norio     | Light Source I   |
| NOGAMI, Takashi     | Light Source III |
| OBINA, Takashi      | Light Source IV  |
| OZAKI, Toshiyuki    | Light Source I   |
| SAGEHASHI, Hidenori | Light Source IV  |
| SAKAI, Hiroshi      | Light Source III |
| SAKANAKA, Shogo     | Light Source II  |
| SATO, Yoshihiro     | Light Source V   |
| SHIMADA, Miho       | Light Source I   |
| SHINOE, Kenji       | Light Source II  |
| SHIOYA, Tatsuro     | Light Source I   |
| TADANO, Mikito      | Light Source IV  |
| TAHARA, Toshihiro   | Light Source III |
| TAKAHASHI, Takeshi  | Light Source II  |
| TAKAI, Ryota        | Light Source IV  |
| TANIMOTO, Yasunori  | Light Source III |
| TSUCHIYA, Kimichika | Light Source I   |
| UCHIYAMA, Takashi   | Light Source VI  |
| UEDA, Akira         | Light Source I   |
| UMEMORI, Kensei     | Light Source II  |

| Name               | Group*          |
|--------------------|-----------------|
| YAMAMOTO, Masahiro | Light Source VI |

---

### Guest Professor

|                    |                                 |
|--------------------|---------------------------------|
| ASAKURA, Kiyotaka  | (Hokkaido Univ.)                |
| HAJIMA, Ryoichi    | (JAEA)                          |
| ISHIHARA, Sumio    | (Tohoku Univ.)                  |
| KAMIKUBO, Hironari | (NAIST)                         |
| KATO, Masahiro     | (IMS)                           |
| KIMURA, Masao      | (NIPPON STEEL & SUMITOMO METAL) |
| KOSHIHARA, Shinya  | (Tokyo Inst. Tech.)             |
| MORITOMO, Yutaka   | (Tsukuba Univ.)                 |
| OHKUMA, Haruo      | (JASRI/SPring-8)                |
| TAKAHASHI, Yoshio  | (Hiroshima Univ.)               |
| YAO, Min           | (Hokkaido Univ.)                |

---

### Postdoctoral Fellow

|                   |
|-------------------|
| SAKAI, Enju       |
| SUDAYAMA, Takaaki |
| TAKEICHI, Yasuo   |
| YONEMURA, Hiroki  |

---

### The Graduate University for Advanced Studies

|                |
|----------------|
| INOUE, Keisuke |
| WU, Yanlin     |

#### \* Synchrotron Radiation Science Division

|       |   |
|-------|---|
| ES    | Electronic Structure                                |
| SMS   | Structural Material Science                         |
| MC    | Materials Chemistry                                 |
| LS    | Life Sciences                                       |
| DF    | Development in Future SRR                           |
| BETSS | Beamline Engineering, Technical Services and Safety |
| USD   | User Support and Dissemination                      |
| SPF   | Slow Positron Facility                              |

*Italic: the additional post*