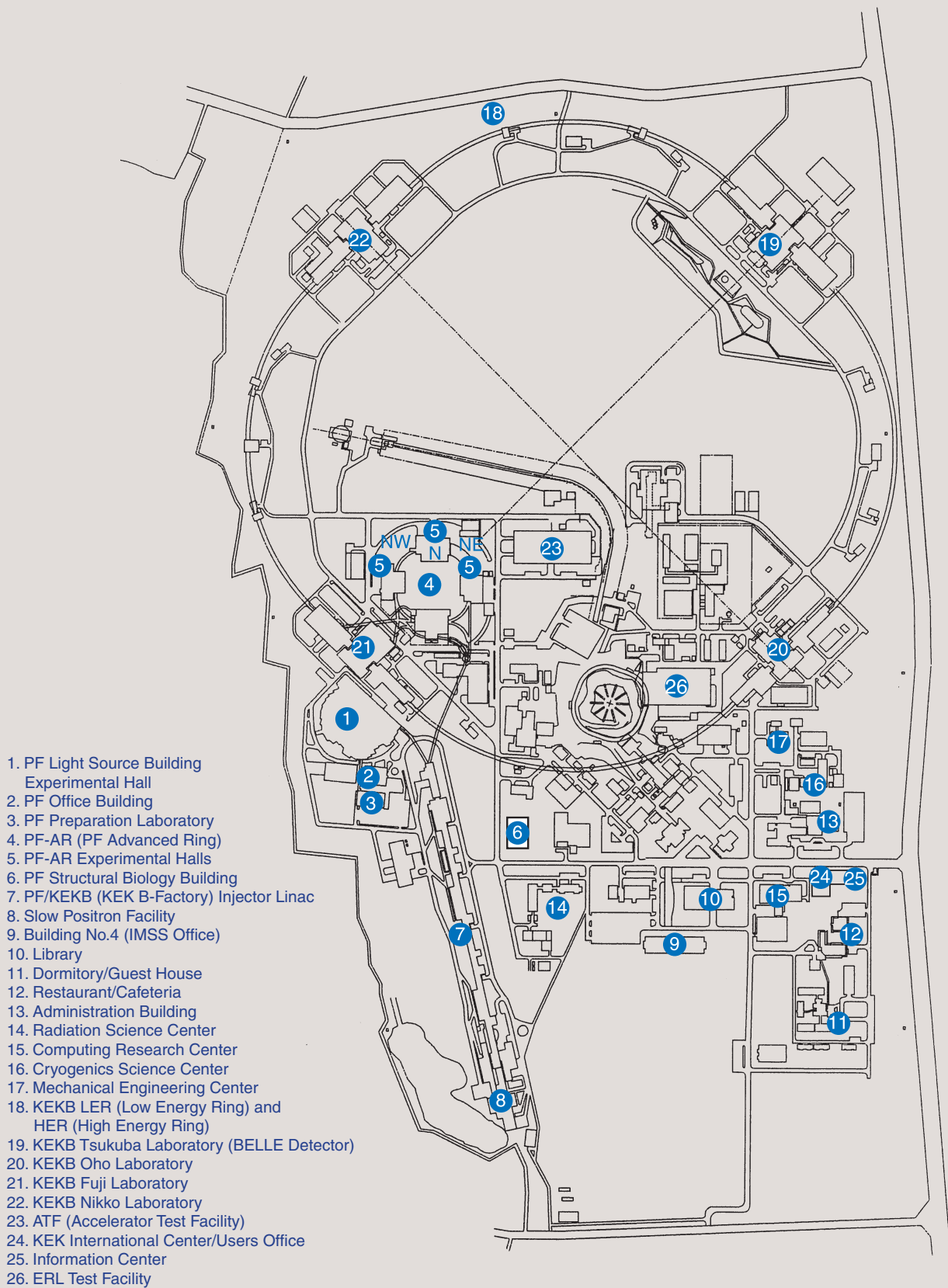


# 1. Site and Organization







KEK consists of four research institutions, i.e., the Institute of Materials Structure Science (IMSS), the Institute of Particle and Nuclear Studies (IPNS), the Accelerator Laboratory (AL), and the Applied Research Laboratory. As shown in Fig. 1, the IMSS constitutes the Synchrotron Radiation Science Divisions I and II, the Neutron Science Division, the Muon Science Division, the Structural Biology Research Center, and the Condensed Matter Research Center. Table I shows a list of the members of the Advisory Committee of the IMSS.

Photon Factory (PF) consists of two divisions of the IMSS (the Synchrotron Radiation Science Divisions I and II) and the Accelerator Division VII of the AL as shown in the organization chart of Fig. 2. The staff members of the PF list in Table 2. Synchrotron Radiation Science Divisions I and II consist of five beamline

groups (electronic structure group, condensed matter group, materials chemistry group, life sciences group and slow positron group), two engineering and administration groups (beamline engineering, technical services & safety group and user support & dissemination group) and two working groups (ultrafast dynamics group and advanced detector R&D group). The Accelerator Division VII has six groups, which are named Light Source Group I to VI. The missions of each group are as follows: Group I is in charge of orbits, magnets, and insertion devices, Group II of RF, SC cavities and so on, Group III mainly of vacuum, Group IV mainly of beam diagnostics and accelerator control, Group V of front-end, safety and so on, and Group VI mainly of electron guns.

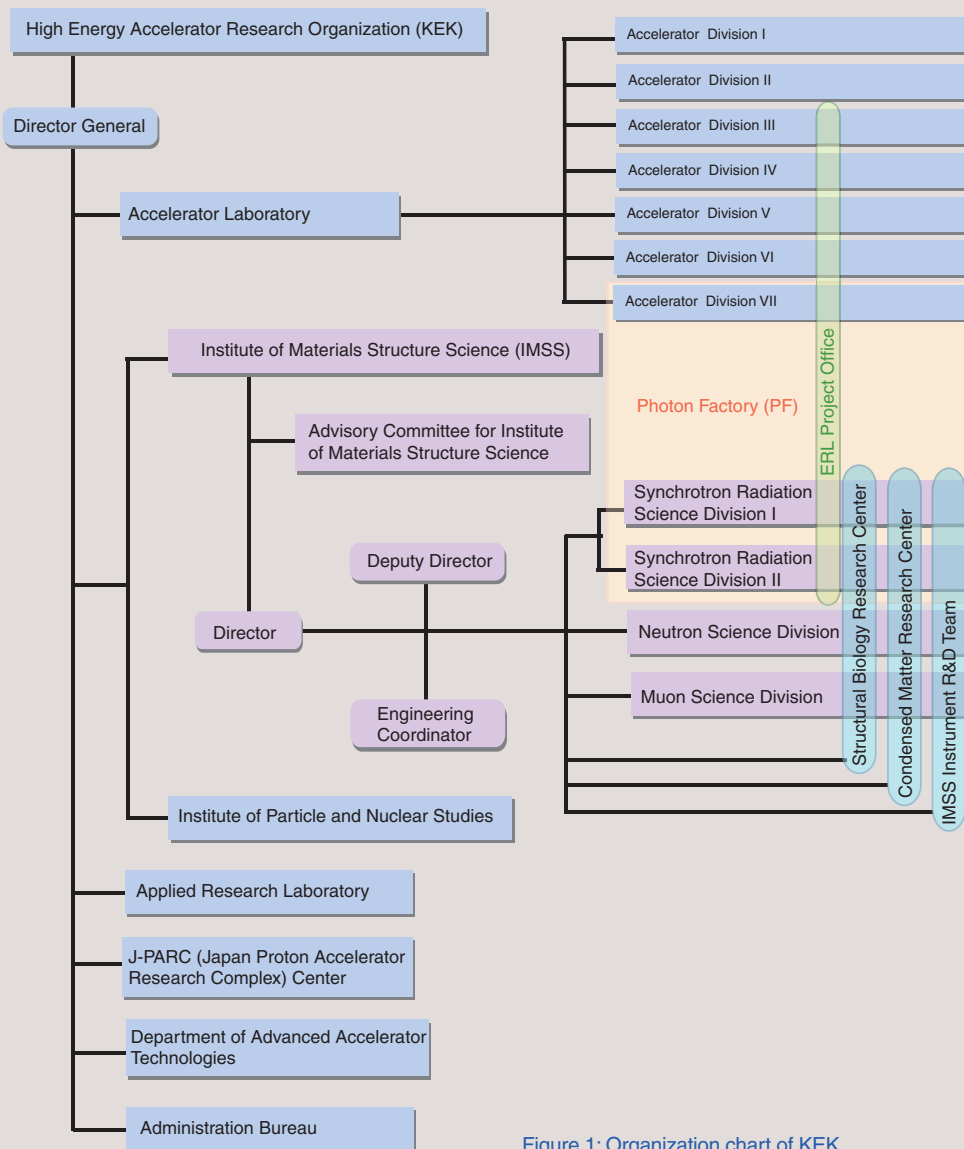


Figure 1: Organization chart of KEK.

Table 1: The members of the Advisory Committee for Institute of Materials Structure Science.

ADACHI, Shin-ichi	Photon Factory, IMSS, KEK
AKIMITSU, Jun	Aoyama Gakuin University
AMEMIYA, Yoshiyuki**	The University of Tokyo
FUJII, Yasuhiko	Comprehensive Research Organization for Science and Society
KADONO, Ryosuke	Muon Science Division, IMSS, KEK
KANAYA, Toshiji	Kyoto University
KATAOKA, Mikio	Nara Institute of Science and Technology
KAWATA, Hiroshi	Photon Factory, IMSS, KEK
KOBAYASHI, Yukinori	Photon Factory, Accelerator Laboratory, KEK
KUMAI, Reiji	Photon Factory, IMSS, KEK
KUMIGASHIRA, Hiroshi	Photon Factory, IMSS, KEK
MIYAKE, Yasuhiro	Muon Science Division, IMSS, KEK
MIZUKI, Jun'ichiro	Kwansei Gakuin University
MURAKAMI, Youichi	Photon Factory, IMSS, KEK
OSHIMA, Masaharu	The University of Tokyo
OTOMO, Toshiya	Neutron Science Division, IMSS, KEK
SAITO, Naohito	Institute of Particle and Nuclear Studies, KEK
SASAKI, Shinichi	Applied Research Laboratory, KEK
SATO, Mamoru	Yokohama City University
SETO, Hideki*	Neutron Science Division, IMSS, KEK
SENDA, Toshiya	Photon Factory, IMSS, KEK
TAKATA, Masaki	RIKEN/SPring-8
TORIKAI, Eiko	University of Yamanashi
YAMAGUCHI, Seiya	Accelerator Laboratory, KEK

\* Chairperson \*\* Vice-Chairperson

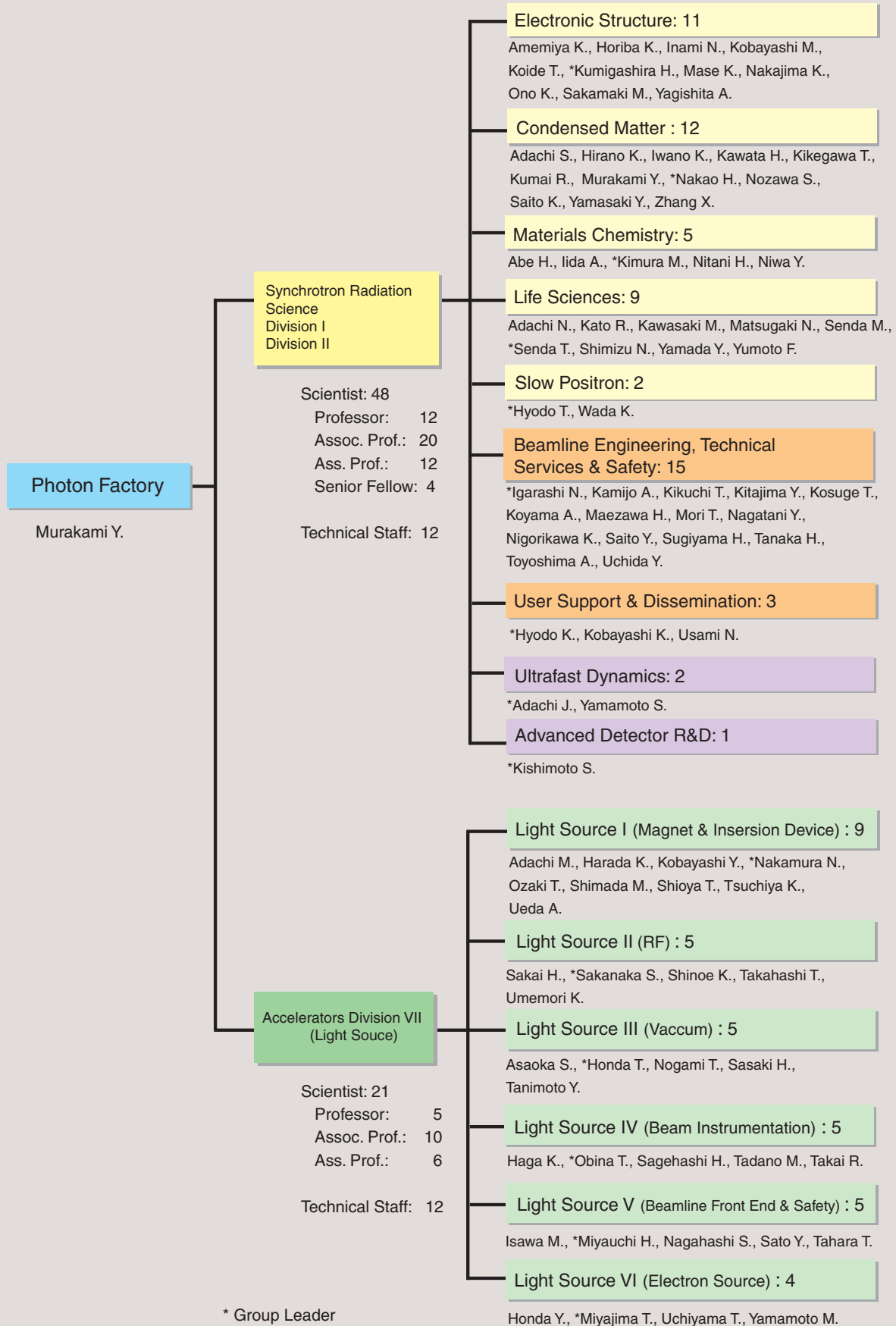


Figure 2: Organization chart of PF (as of March 31, 2014) .

Table 2: Staff members of the Photon Factory.

Name	Group*
<b>Research Staff</b>	
<b>Director</b>	
MURAKAMI, Youichi	CM
Synchrotron Radiation Science Division I & II	
ABE, Hitoshi	MC
ADACHI, Jun-ichi	UD ( <i>ES</i> )
ADACHI, Naruhiko	LS
ADACHI, Shinichi	CM ( <i>UD, AD</i> )
AMEMIYA, Kenta	ES ( <i>BETSS, AD, UD</i> )
HIRANO, Keiichi	CM
HORIBA, Koji	ES
HYODO, Kazuyuki	USD ( <i>LS</i> )
HYODO, Toshio	SPF
IGARASHI, Noriyuki	BETSS ( <i>LS, AD</i> )
IIDA, Atsuo	MC
INAMI, Nobuhito	ES ( <i>AD</i> )
IWANO, Kaoru	CM
KAMIJO, Ai	BETSS
KATO, Ryuichi	LS
KAWASAKI, Masato	LS
KAWATA, Hiroshi	CM
KIKEGAWA, Takumi	CM
KIKUCHI, Takashi	BETSS ( <i>UD</i> )
KIMURA, Masao	MC
KISHIMOTO, Shunji	AD, CM ( <i>UD</i> )
KITAJIMA, Yoshinori	BETSS ( <i>ES</i> )
KOBAYASHI, Katsumi	USD
KOBAYASHI, Masaki	ES
KOIDE, Tsuneharu	ES
KOSUGE, Takashi	BETSS ( <i>AD</i> )
KOYAMA, Atsushi	BETSS
KUMAI, Reiji	CM ( <i>AD</i> )
KUMIGASHIRA, Hiroshi	ES
MAEZAWA, Hideki	BETSS
MASE, Kazuhiko	ES
MATSUGAKI, Naohiro	LS
MORI, Takeharu	BETSS
NAGATANI, Yasuko	BETSS
NAKAJIMA, Kyo	ES
NAKAO, Hironori	CM ( <i>UD</i> )
NIGORIKAWA, Kazuyuki	BETSS ( <i>AD</i> )
NITANI, Hiroaki	MC
NIWA, Yasuhiro	MC ( <i>BETSS, UD</i> )
NOZAWA, Shunsuke	CM ( <i>UD</i> )
ONO, Kanta	ES ( <i>AD</i> )
SAITO, Kotaro	CM
SAITO, Yuuki	BETSS
SAKAMAKI, Masako	ES ( <i>AD</i> )
SENDA, Miki	LS
SENDA, Toshiya	LS
SHIMIZU, Nobutaka	LS ( <i>BETSS</i> )
SUGIYAMA, Hiroshi	BETSS ( <i>CM</i> )

Name	Group*
TANAKA, Hirokazu	BETSS (UD)
TOYOSHIMA, Akio	BETSS (UD)
UCHIDA, Yoshinori	BETSS
USAMI, Noriko	USD (LS)
WADA, Ken	SPF
YAGISHITA, Akira	ES
YAMADA, Yusuke	LS
YAMAMOTO, Shigeru	UD
YAMASAKI, Yuichi	CM (UD)
YUMOTO, Fumiaki	LS
ZHANG, Xiaowei	CM

---

#### Accelerator Division VII

ADACHI, Masahiro	Light Source I
ASAOKA, Seiji	Light Source III
HAGA, Kaiichi	Light Source IV
HARADA, Kentaro	Light Source I
HONDA, Tohru	Light Source III
HONDA, Yosuke	Light Source VI
ISAWA, Masaaki	Light Source V
KOBAYASHI, Yukinori	Light Source I
MIYAJIMA, Tsukasa	Light Source VI
MIYAUCHI, Hiroshi	Light Source V
NAGAHASHI, Shinya	Light Source V
NAKAMURA, Norio	Light Source I
NOGAMI, Takashi	Light Source III
OBINA, Takashi	Light Source IV
OZAKI, Toshiyuki	Light Source I
SAGEHASHI, Hidenori	Light Source IV
SAKAI, Hiroshi	Light Source II
SAKANAKA, Shogo	Light Source II
SASAKI, Hiroyuki	Light Source III
SATO, Yoshihiro	Light Source V
SHIMADA, Miho	Light Source I
SHINOE, Kenji	Light Source II
SHIOYA, Tatsuro	Light Source I
TADANO, Mikito	Light Source IV
TAHARA, Toshihiro	Light Source V
TAKAHASHI, Takeshi	Light Source II
TAKAI, Ryota	Light Source IV
TANIMOTO, Yasunori	Light Source III
TSUCHIYA, Kimichika	Light Source I
UCHIYAMA, Takashi	Light Source VI
UEDA, Akira	Light Source I
UMEMORI, Kensei	Light Source II
YAMAMOTO, Masahiro	Light Source VI

---

#### Guest Professor

ASAKURA, Kiyotaka	(Hokkaido Univ.)
HAJIMA, Ryoichi	(JAEA)
ISHIHARA, Sumio	(Tohoku Univ.)
KAMIKUBO, Hironari	(Nara Institute of Science and Technology)
KATOH, Masahiro	(UVSOR)

Name	Group*
KONDO, Tadashi	(Osaka Univ.)
KOSHIHARA, Shinya	(Tokyo Institute of Technology)
MORITOMO, Yutaka	(Univ. of Tsukuba)
OHKUMA, Haruo	(SPring-8)
TAKAHASHI, Yoshio	(Hiroshima Univ.)
YAO, Min	(Hokkaido Univ.)

---

### Postdoctoral Fellow

SAKAI, Enju  
TAKEICHI, Yasuo

---

### The Graduate University for Advanced Studies

HARADA, Ayaka  
INOUE, Keisuke  
MATSUBARA, Haruki  
WU, Yanlin

\* Synchrotron Radiation Science Division

ES	Electronic Structure
CM	Condensed Matter
MC	Materials Chemistry
LS	Life Sciences
SPF	Slow Positron Facility
BETSS	Beamline Engineering, Technical Services and Safety
USD	User Support and Dissemination
UD	Ultrafast Dynamics
AD	Advanced Detector R&D

*Italic: the additional post*