

3

Graduate School Education

KEK is one of the basic organizations of the Graduate University for Advanced Studies (SOKENDAI), and has the School of High Energy Accelerator Science, which consists of three departments: Accelerator Science, Materials Structure Science, and Particle and Nuclear Physics. The majority of the PF staff members are in charge of giving lectures and supervising graduate students of the Department of Materials Structure Science. SOKENDAI offers a five-year PhD course for undergraduate students and a three-year PhD course for master's degree holders. The School of High Energy Accelerator Science held its "open campus day" for young researchers and undergraduate students at the Tsukuba campus on July 9, 2013 and half-day guidance meetings for potential young candidates in June 22, 2013 and March 8, 2014 at Tokyo. Figure 1 is a photo of Prof. Toshiya Senda of the PF, who explains what is "Structural Biology" by using synchrotron radiation at the guidance meeting in March 8, 2014. The PF has also a system for Joint PhD (JPHD) students, who are accepted by the PF to pursue advanced studies under the supervision of PF staff members towards their PhD degrees in collaboration with their home universities. The numbers of graduate students of SOKENDAI and JPHD during the past fifteen years are listed in Table 1.

In addition to the SOKENDAI and JPHD graduate students, a number of doctoral theses were written based on research carried out at the PF. Figure 2 shows the statistics of such graduate students.



Figure 1: A snapshot of the guidance.

Table 1: Number of SOKENDAI and JPHD students at the PF over the period 1999-2013.

FY	SOKENDAI	JPHD
1999	6	11
2000	8	12
2001	10	8
2002	12	13
2003	12	7
2004	14	5
2005	14	6
2006	9	10
2007	6	13
2008	6	10
2009	6	9
2010	5	10
2011	4	5
2012	6	6
2013	6	7

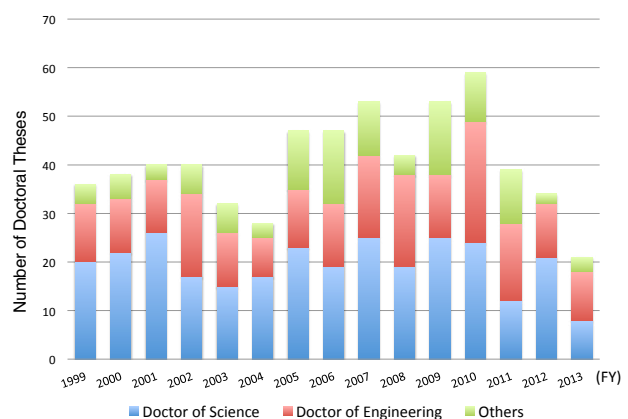


Figure 2: Number of students who obtained doctoral degrees based on scientific activities at the PF.