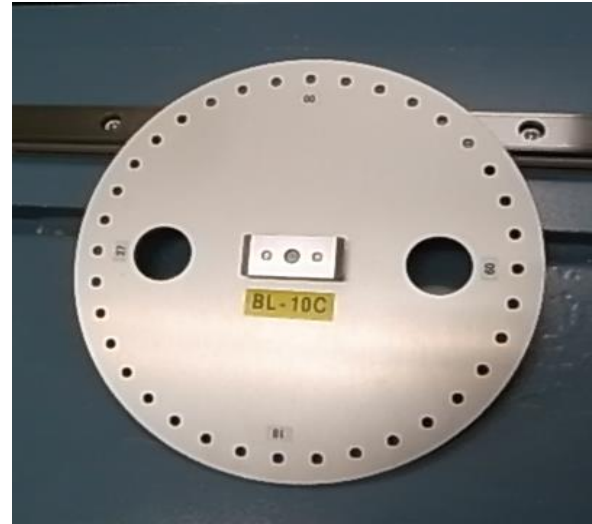
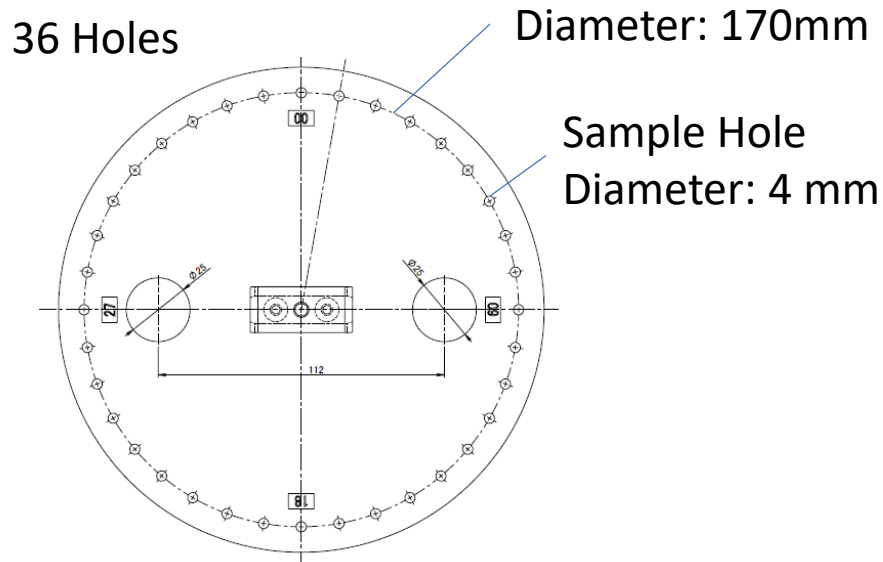


# Rotary Automatic Sample Changer



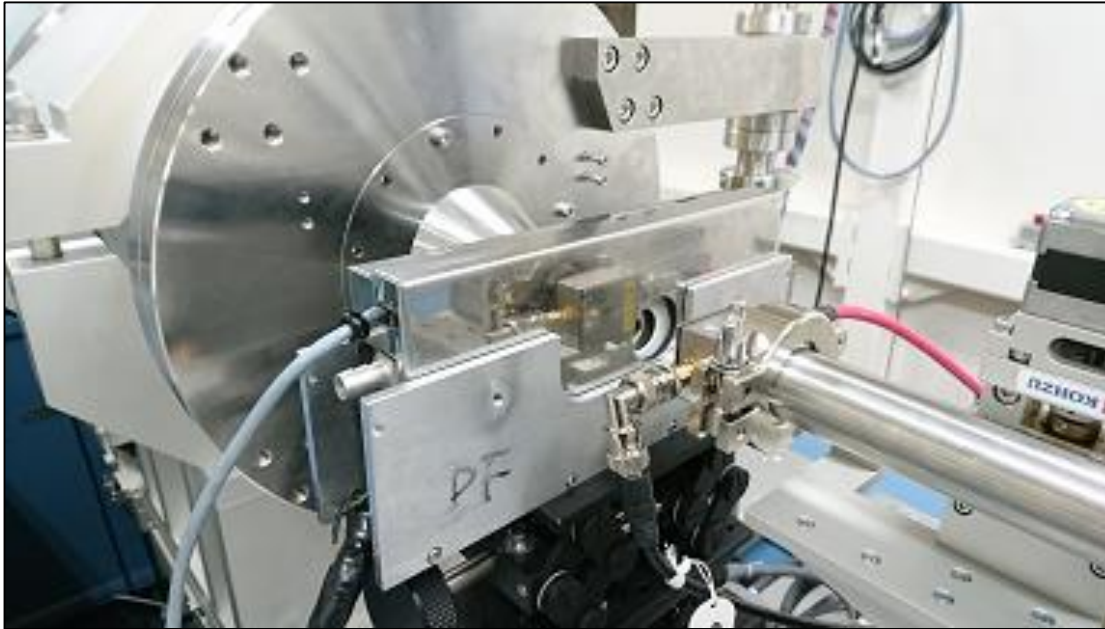
Sample Disk Tray (36 Holes)



- Users can borrow these sample trays at the beamline.
- Since the drawing of this disk tray can be supplied, please contact the staff.

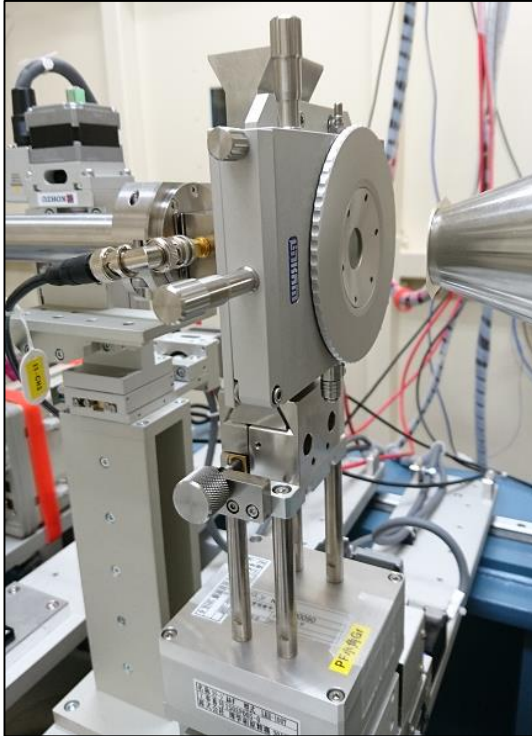
# DSC Hot Sample Stage

FP84 (METTLER TOLEDO) : RT ~ 375 °C



- If you want to use DSC function, please contact the staff before your beamtime.

# Hot/Cold Sample Stage #1

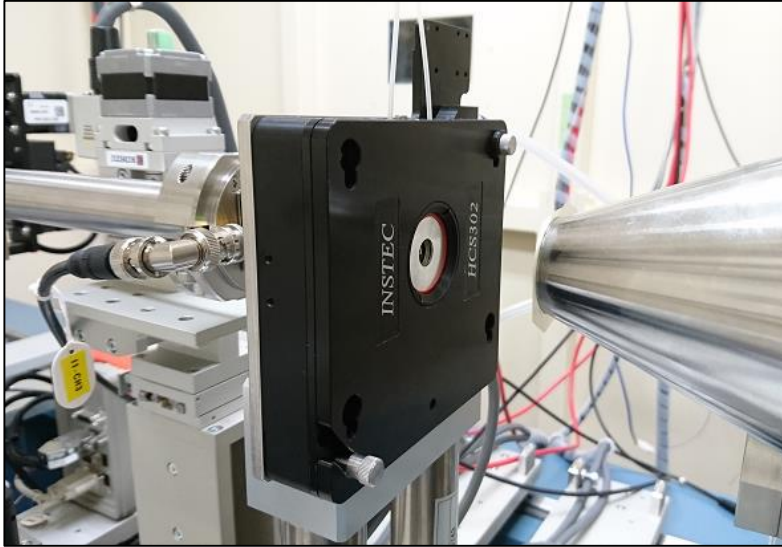


10002L (Linkam Scientific)  
: -190~600 °C



- The sample holder has high reproducibility of the sample position.

# Hot/Cold Sample Stage #2



HSC302-LN190 (Instec)  
: -190~400 °C

Sample Cells for Instec stage



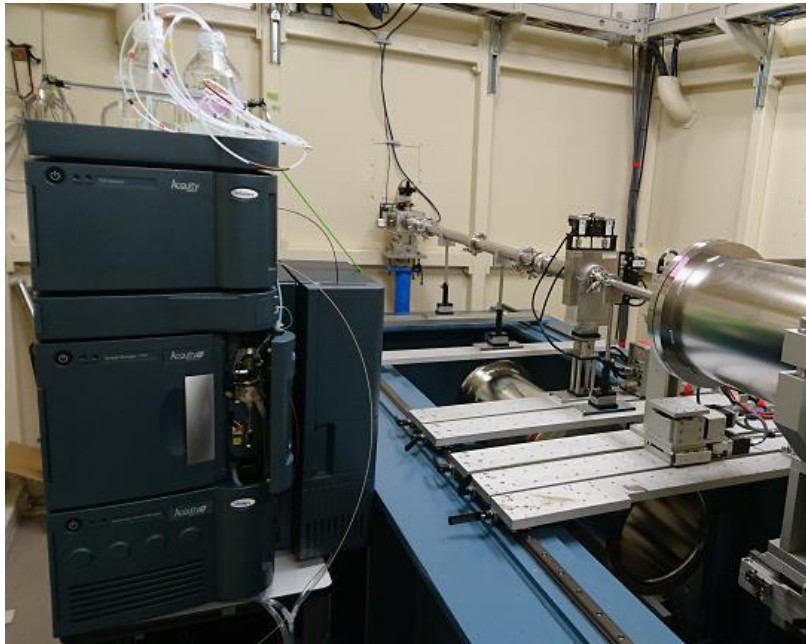
Capillary, Powder,  
Plate, Solution

- A sample cell has high reproducibility of the sample position.

# HPLC for SEC-SAXS

@BL-10C

ACQUITY UPLC H-Class (Waters)



Flow rate (recommendation):

0.05ml/min@Superdex 200 10/300

Exposure time: 20sec/image

Prepared Column : Superdex 200 Increase 10/300 GL or 3.2/300 (GE Healthcare)  
Superose 6 Increase 10/300 GL (GE Healthcare)  
WTC-030S5 (Wyatt)

@BL-15A2

Alliance HPLC (Waters)

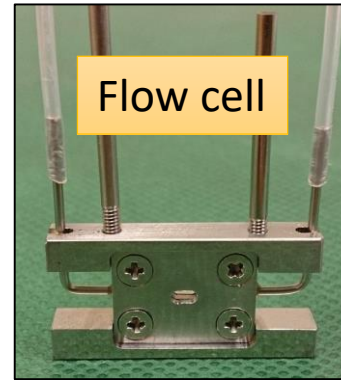
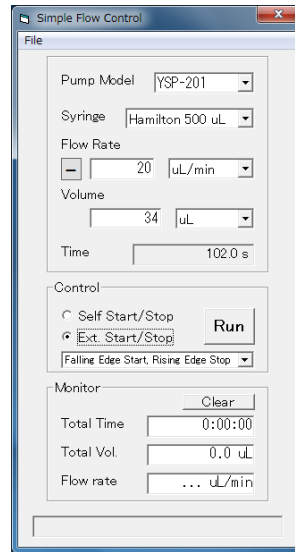


Flow rate (recommendation):

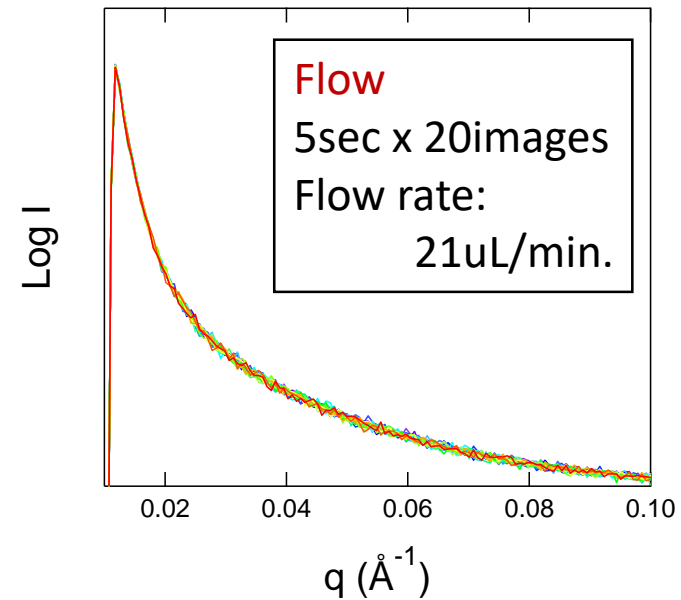
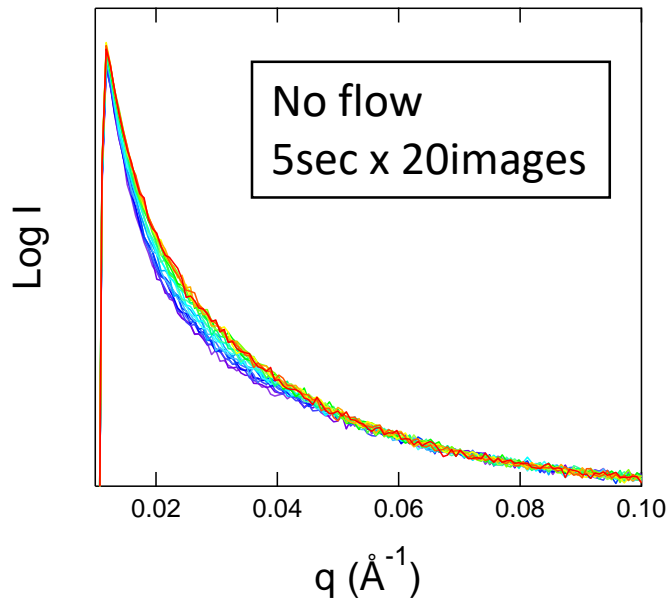
0.1ml/min@Superdex 200 10/300

Exposure time: 20sec/image

# Solution Sample Flow System (For Radiation Damage)

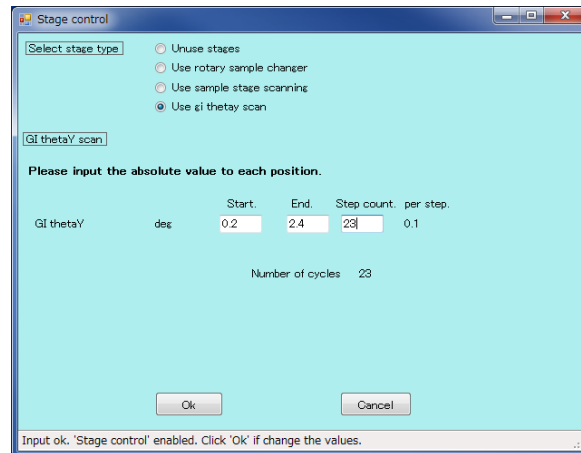
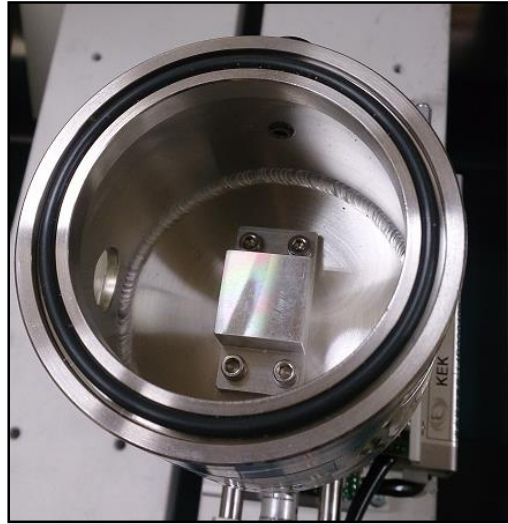


Window size:  
1.5 x 3.0 x t1.25mm

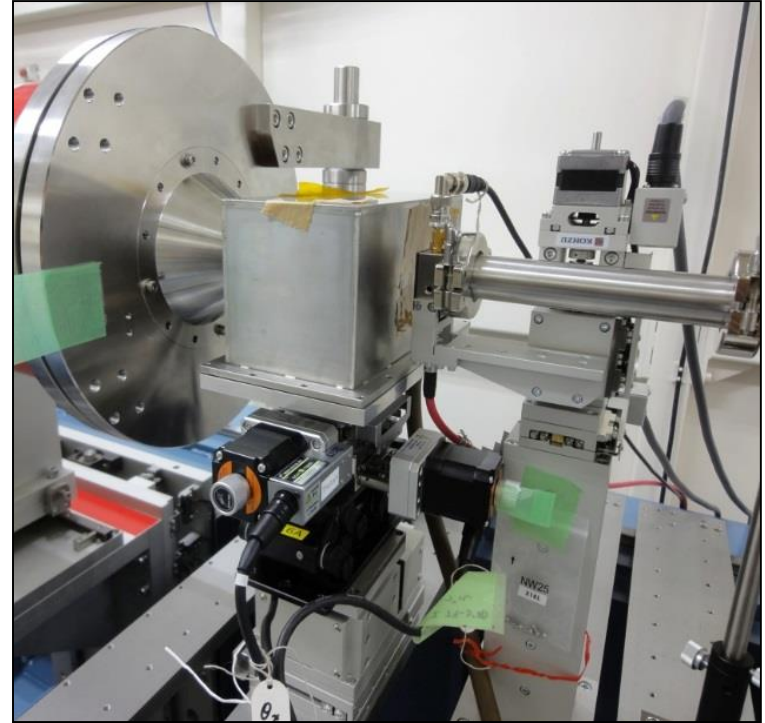


# Standard GISAXS stage

(1) BL-10C/BL-15A2



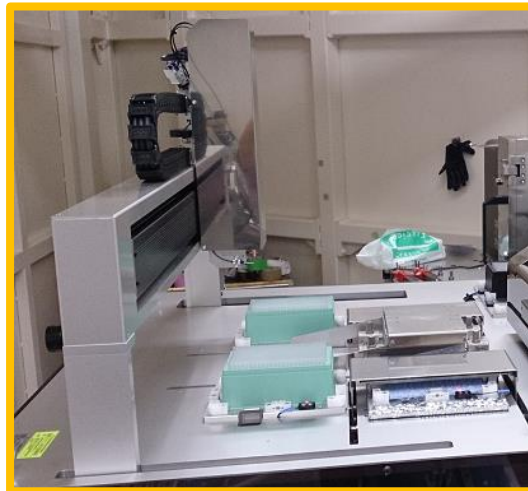
(2) BL-6A



The incident angle can be changed sequentially during the measurement.

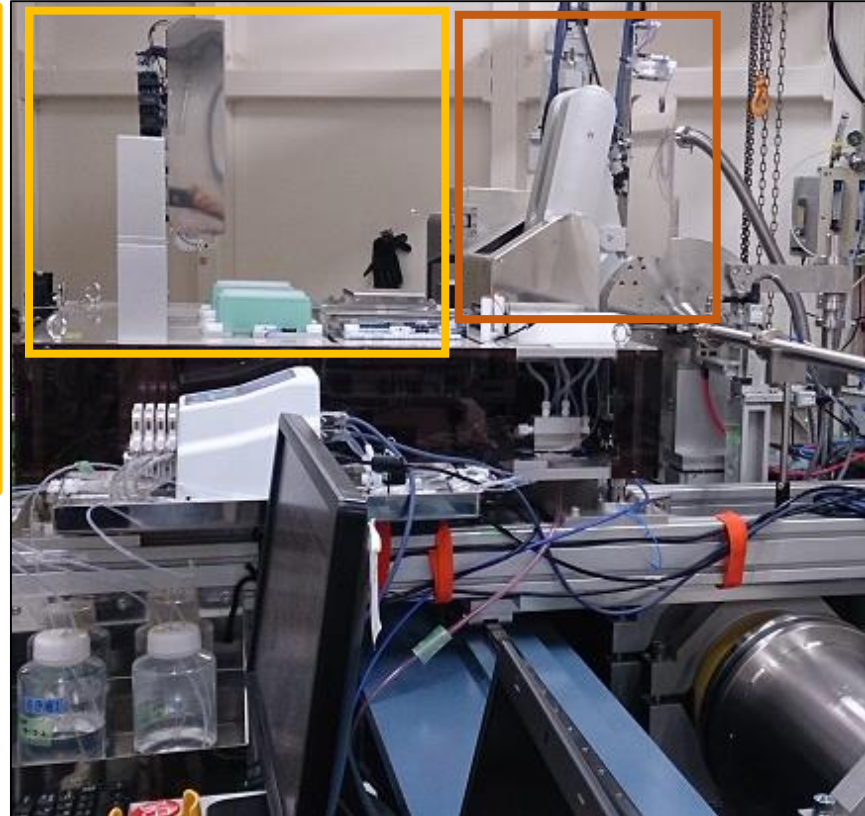
# PF Automatic Solution Sample Changer (SSC)

@BL-15A2



Auto pipetter

- 192 samples (96 well  $\times$  2 plates)
- Sample+4 buffers mixing available
- Sample volume: 20 ~ 30  $\mu$ L



- 5 min / sample @ full sequence
  - Sample mix. & load, cell wash/drying



Sample loader  
(Loading, Retrieving, cell-wash&dry)

192 samples can be measured in 16 hours without user intervention.